

see LCC 34183
31760

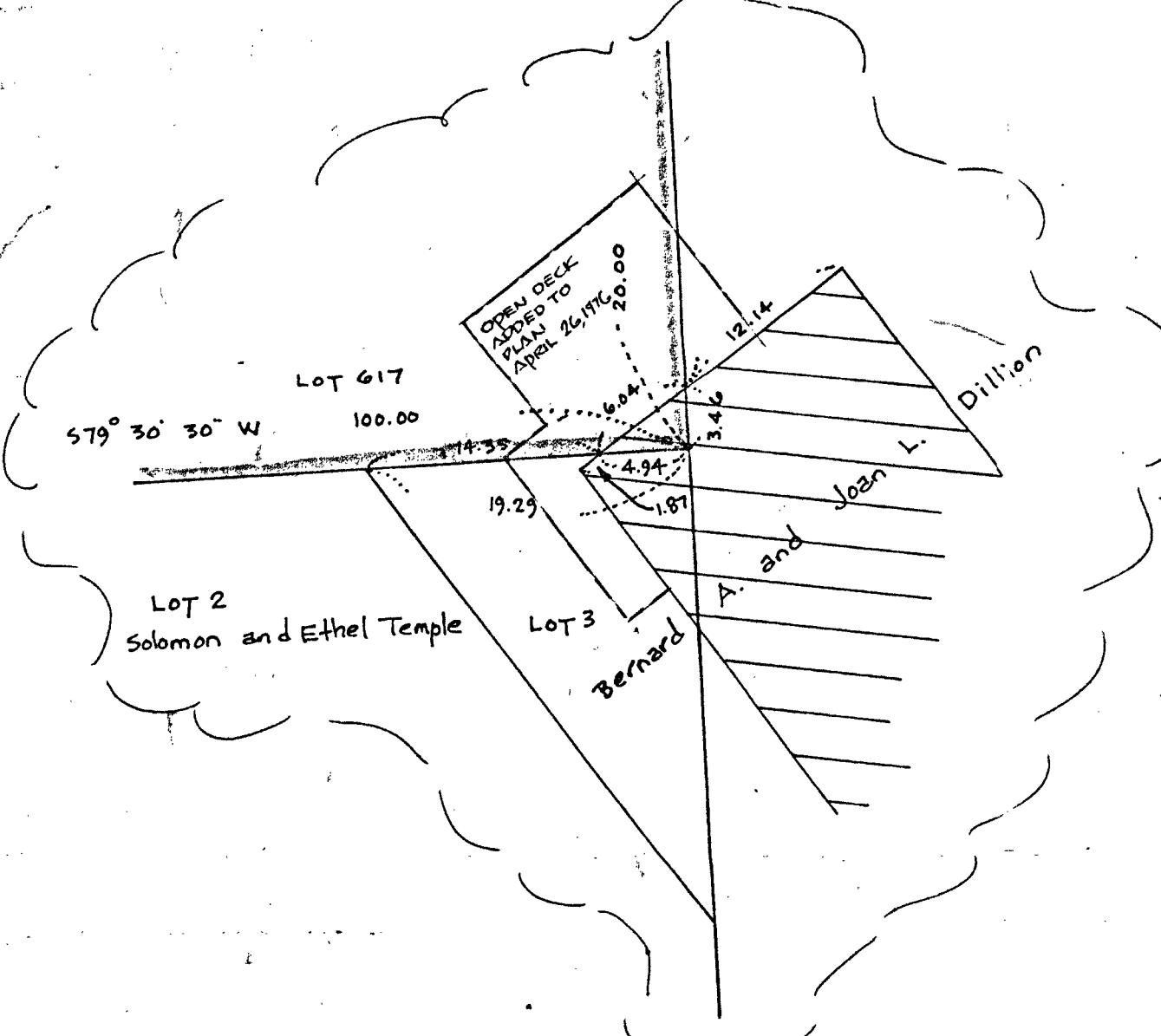
FITZGERALD ST. (Public 30' wide)
671.00

MORSE ST. (Private 3' wide)
420.23

117.79

ROGERS ST. (Private 20' wide)
117.79

ELY ST. (Private 20' wide)
185.80

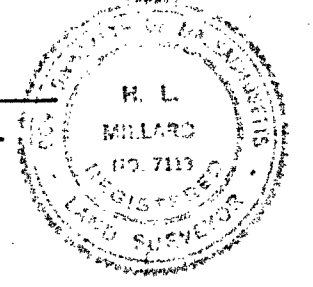


I certify that the conditions on the ground are the same now as at the time of the original survey with the exception of the open deck
April 26, 1976
Howard K. Millard
Registered Land Surveyor

Plan of Land in
RANDOLPH, MASS.

Scale: 1 inch = 40 feet
Pilling Engineering Company Inc.
26 Norfolk St. Dedham, Mass.
March 16, 1972

I certify that this actual survey was made on the ground in accordance with the Land Court Instructions of 1971 on or between September 22, 1971 and March 16, 1972
Date: March 16, 1972
Howard K. Millard
Registered Land Surveyor



I certify that the conditions on the ground are the same now as at the time of the original survey with no exceptions
May 29, 1974
Howard K. Millard
Registered Land Surveyor

Approval under Subdivision Control Law not required
Date: Aug 21, 1972

RECEIVED
AUG 21 1972
PLANNING BOARD
RANDOLPH

RANDOLPH PLANNING BOARD

Transit Traverse				
N10°14'28"W	95.12	93.60		16.91
S14°23'55"E	112.10		108.58	27.88
N80°30'15"E	420.23	69.31		414.47
S10°23'01"E	117.79		115.86	21.23
S15°13'35"E	80.57		77.74	21.16
S08°17'14"E	185.80		183.86	26.78
S48°16'01"W	248.04		165.11	185.10
S50°54'04"W	281.09		177.27	218.14
N10°22'40"W	671.06	660.08		120.88
N79°37'20"E	30.00	5.40		29.51

OK. R.C.C. exc. up date, appt. 8/21/72