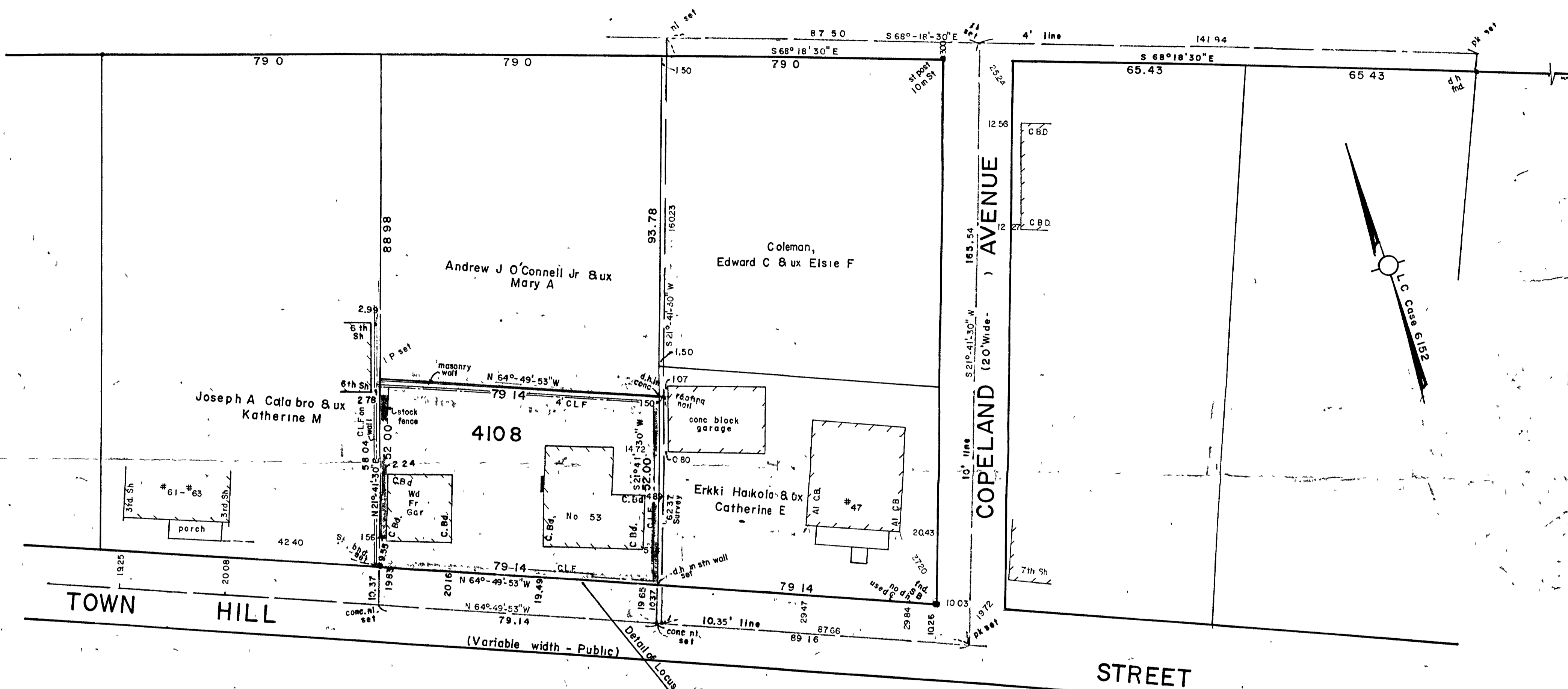


COPELAND

Public

STREET



TOWN HILL

(Variable width - Public)

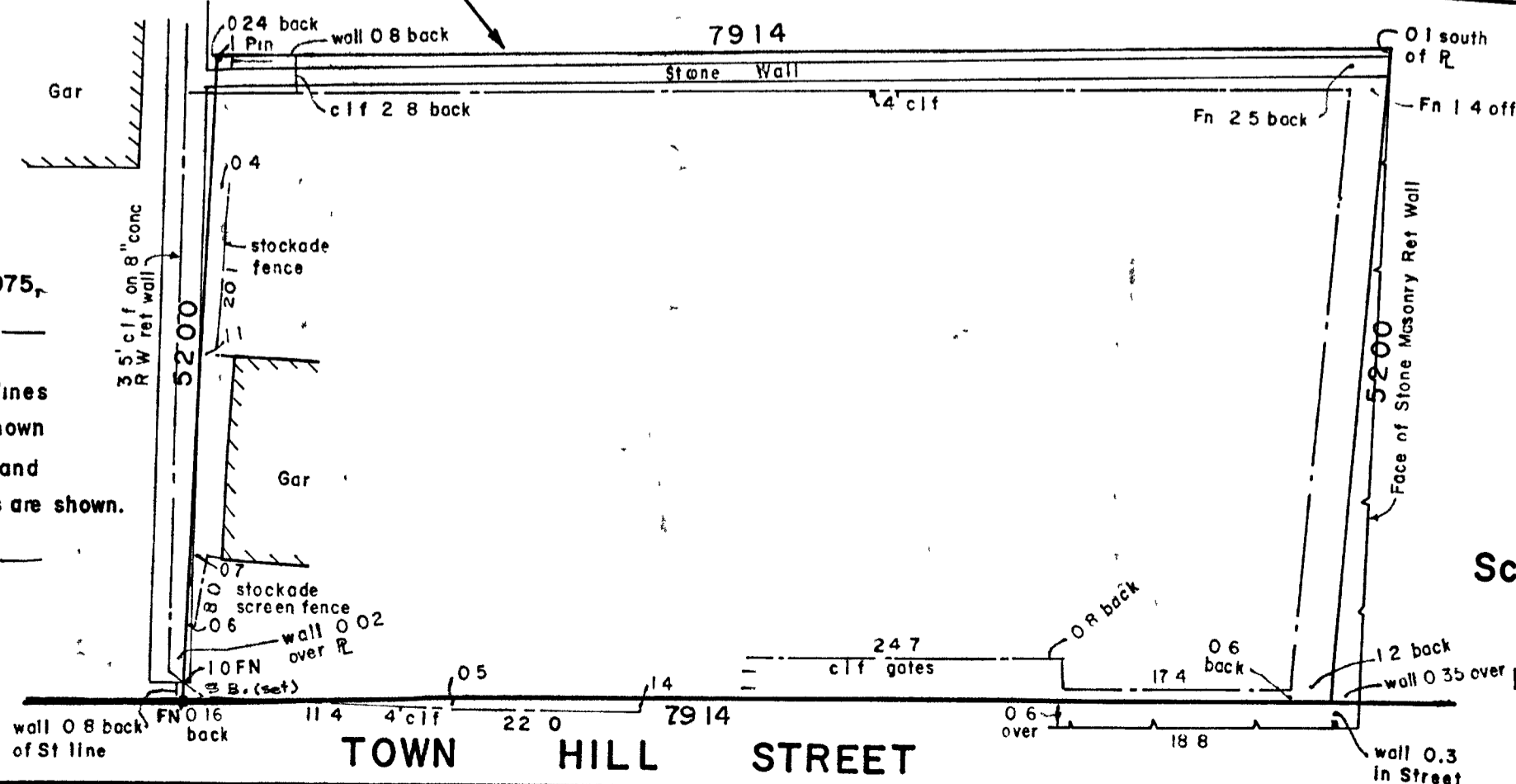
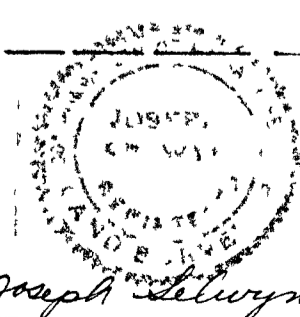
STREET

NOTE Conditions on the ground are the same as when originally surveyed except as shown.

NOTE: I hereby certify that this actual survey was made on the ground in accordance with the Land Court Instructions of 1971 on August 17, 1975, and rechecked and brought up to date April 10, 1976. Reg Land Surv. Joseph Selwyn

NOTE: I hereby certify that the property lines shown on this plan are the lines dividing existing ownerships, and the lines of the Streets and Ways shown are those of Public or Private Streets or Ways already established, and that no new lines for division of existing ownerships or for new ways are shown.

Joseph Selwyn Reg. Land Surv.



TOWN HILL STREET

PLAN OF LAND QUINCY, MASS.

Scale: 20 feet to an inch

AUGUST 17, 1975

Rechecked and brought up to date April 12, 1976 Joseph Selwyn - Civil Engineer

14 Linden Ave. - Belmont, Mass