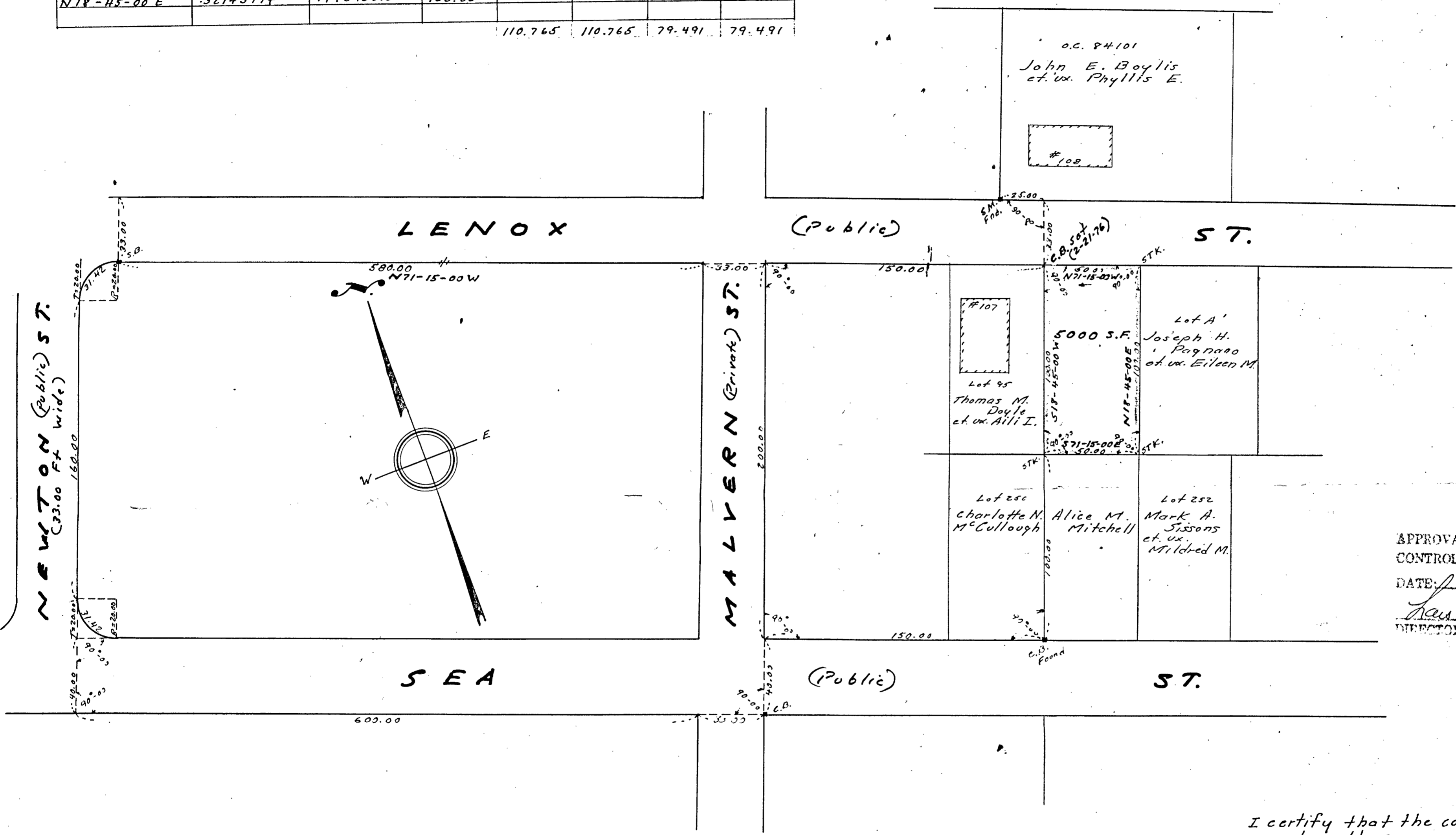


Bearing	Sine	Cosine	Dist.	N +	S -	E +	W -
N71-15-00W	.94693013	.32143974	50.00	16.072			47.347
S18-45-00W	.32143974	.94693013	100.00		94.693		32.144
S71-15-00E	.94693013	.32143974	50.00		16.072	47.347	
N18-45-00E	.32143974	.94693013	100.00	94.693		32.144	
				110.765	110.765	79.491	79.491



APPROVAL UNDER SUBDIVISION CONTROL LAW NOT REQUIRED.
 DATE: 24 FEB 76
Law Howard Linder
 DIRECTOR OF PLANNING

Plan of Land in Quincy, Mass.
 Scale 40 Feet to an inch
 July 1975
 Edward H. Collaغان - Surveyor
 93 East Squantum St.
 Quincy, Mass.

I certify that the conditions on the ground are the same now as at the time of the original survey Feb. 21, 1976
Edward H. Collaغان
 Registered Land Surveyor



I CERTIFY THAT THIS ACTUAL SURVEY WAS MADE ON THE GROUND IN ACCORDANCE WITH THE LAND COURT INSTRUCTIONS OF 1971 DURING July 1975
Edward H. Collaغان
 REGISTERED LAND SURVEYOR