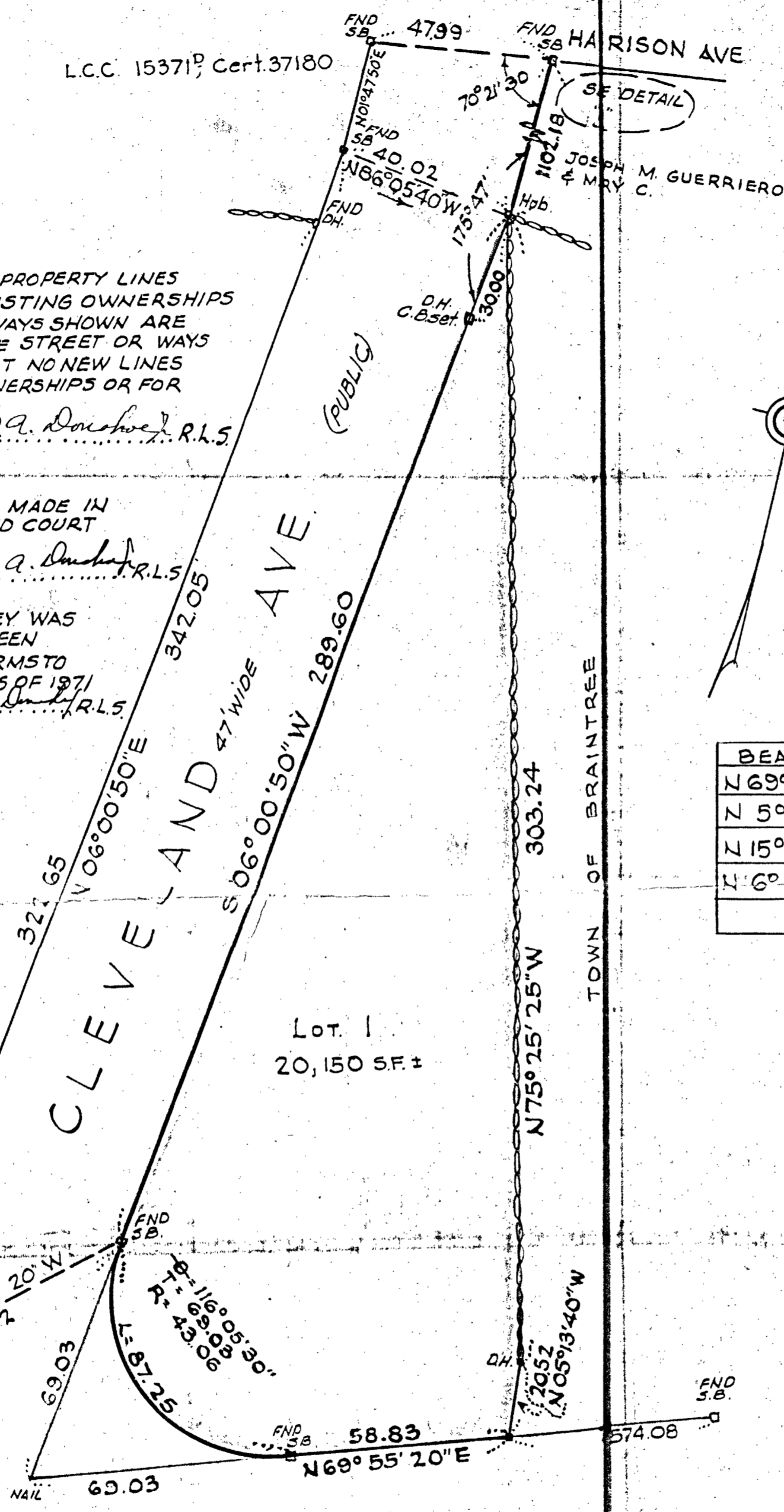
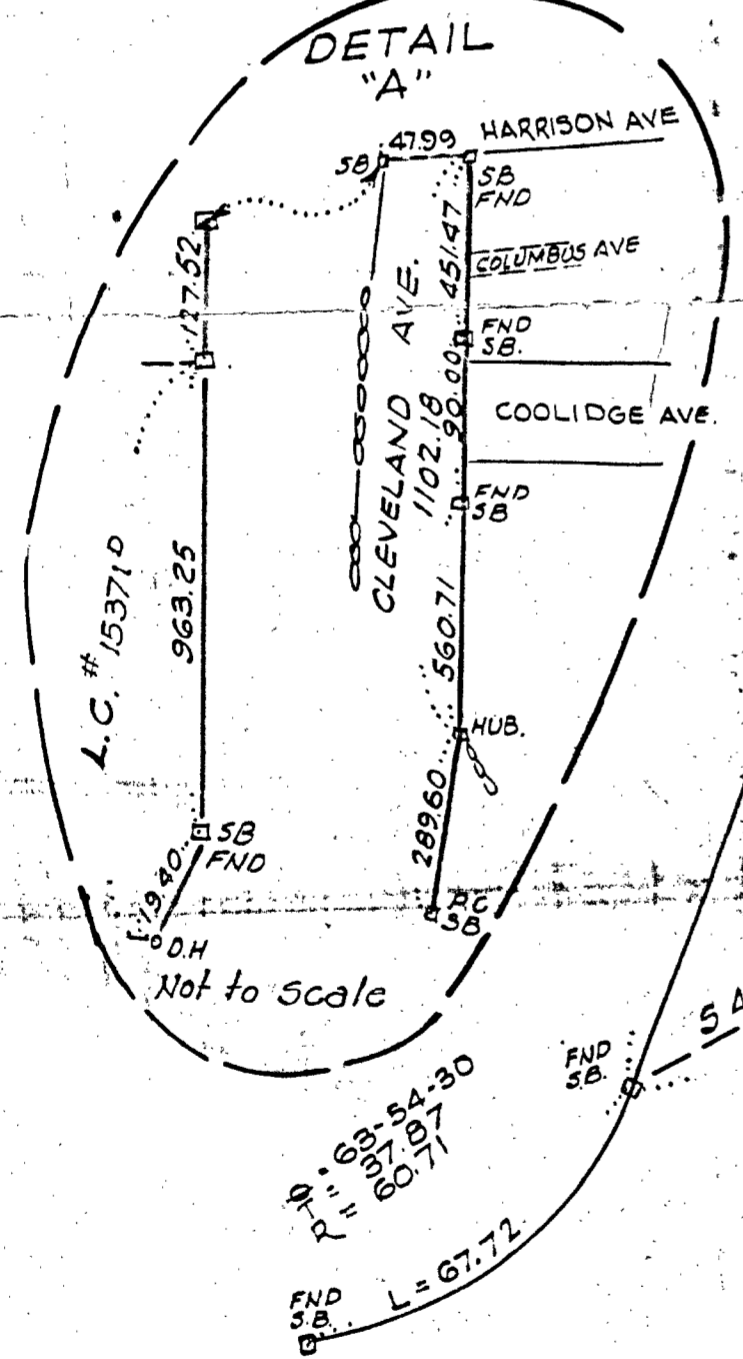


38992A

I HEREBY CERTIFY THAT THE PROPERTY LINES ARE THE LINES DIVIDING EXISTING OWNERSHIPS & THE LINES OF STREETS & WAYS SHOWN ARE THOSE OF PUBLIC OR PRIVATE STREET OR WAYS ALREADY ESTABLISHED, & THAT NO NEW LINES FOR DIVISION OF EXISTING OWNERSHIPS OR FOR NEW WAYS ARE SHOWN.
DATE AUG 21, 1973 *Harold A. Donahoe* R.L.S.

I CERTIFY THIS PLAN WAS MADE IN ACCORDANCE WITH THE LAND COURT INSTRUCTIONS OF 1971.
DATE AUG. 21, 1973 *Harold A. Donahoe* R.L.S.

I CERTIFY THIS ACTUAL SURVEY WAS DONE ON THE GROUND BETWEEN AUG 10 & AUG 20, 1973 & CONFORMS TO THE LAND COURT INSTRUCTIONS OF 1971.
DATE AUG. 21, 1973 *Harold A. Donahoe* R.L.S.



LOT TRAVERSE

BEARING	DIST.	N	S	E	W
N 69° 55' 20" E	127.86	43.90		120.09	
N 5° 13' 40" W	20.52	20.44			1.87
N 15° 25' 25" W	303.24	292.32	3'		80.65
N 6° 06' 50" W	358.63		356.66		37.57
		356.66	356.66	120.09	120.09

UNION 60' WIDE ST.
1959 COUNTY LAYOUT

PLAN OF LOT
BRAINTREE, MASS.
SCALE 1"=30' AUG 21, 1973
H.A. DONAHOE JR. SURVEYOR
BRAINTREE, MASS.
OWNER: PATRICK F. FITZGERALD.

38992A
MAYBE FILED
Date Oct. 10, 1975
By *Silva*
Atty. Braintree 2013
Twp. V.
Sh. No
2 Wpt. No. Ind. Twp.

I certify that the conditions are the same to day as they were when surveyed and the bounds are in the positions indicated.
AUG 22, 1975
Harold A. Donahoe



Harold A. Donahoe Jr.

38992A