

38882A

# PLAN OF LAND IN QUINCY

NORFOLK COUNTY, MASS.

SCALE: 1"=40' DEC. 11, 1974

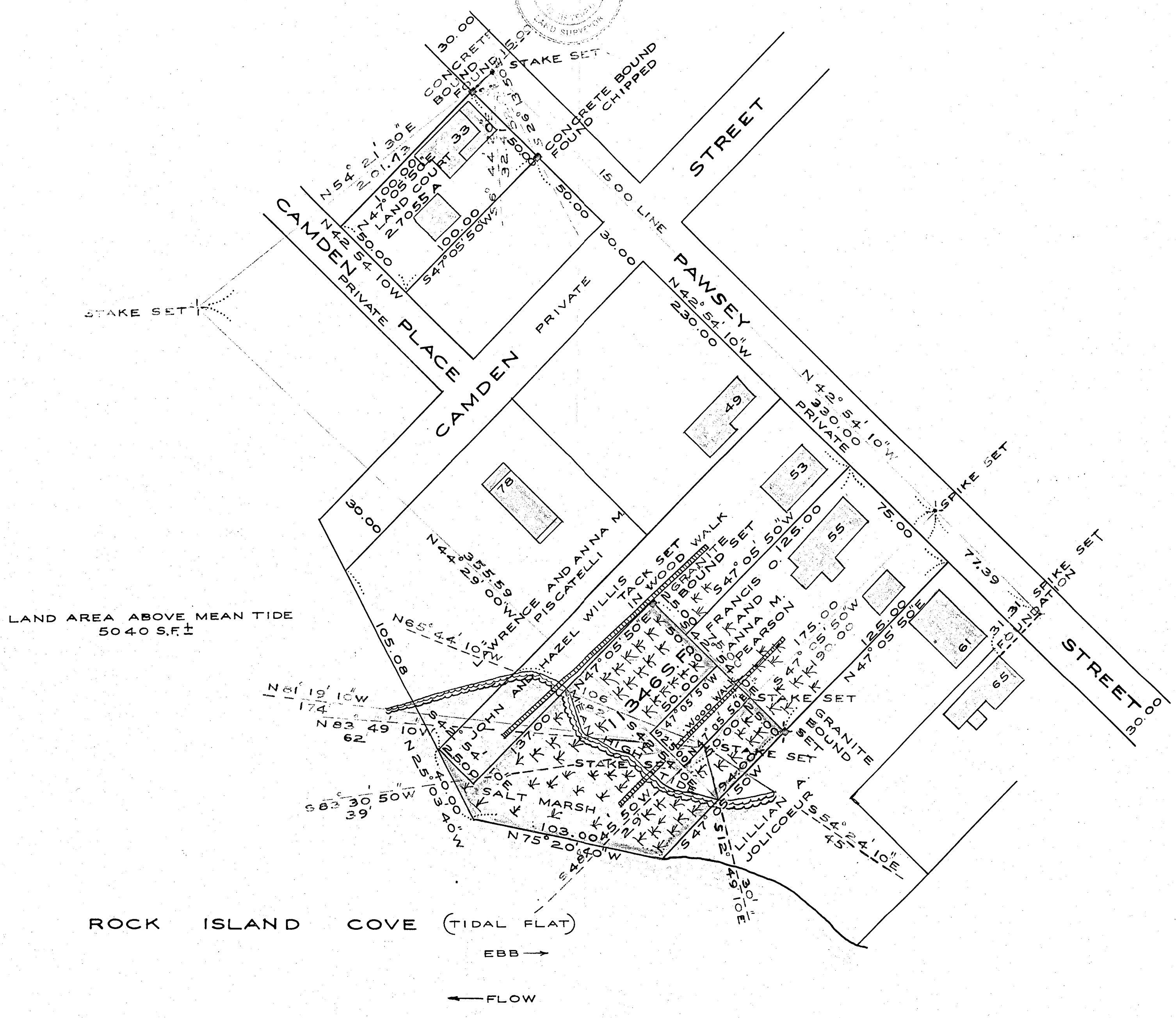
PAUL J. KNIGHT  
SURVEYOR  
WEYMOUTH, MASS.

I certify that this plan was made on the ground in accordance with the instructions of  
1971 on or between OCT. 5, 1974

*Paul J. Knight*  
56 GRIFFIN TERRACE  
WEYMOUTH, MASS.

RECEIVED  
MAY 2, 1975  
*Guy A. Davidson*

I certify that the plan shows the property lines, that are the lines of existing easements, and the lines of streets and ways shown on this plan or on any other plan or map filed in the office of the Registrar of Deeds for the County of Norfolk, Massachusetts, and the lines for the division of the land shown on the plan are shown.  
*Paul J. Knight*



LAND AREA ABOVE MEAN TIDE  
5040 S.F. ±

ROCK ISLAND COVE (TIDAL FLAT)  
EBB →  
← FLOW

DEEDS

**MAY BE FILED**

DATE \_\_\_\_\_

BY \_\_\_\_\_

RECORDED \_\_\_\_\_

INDEXED \_\_\_\_\_

FILED \_\_\_\_\_

PRINTS NEEDED

38882A