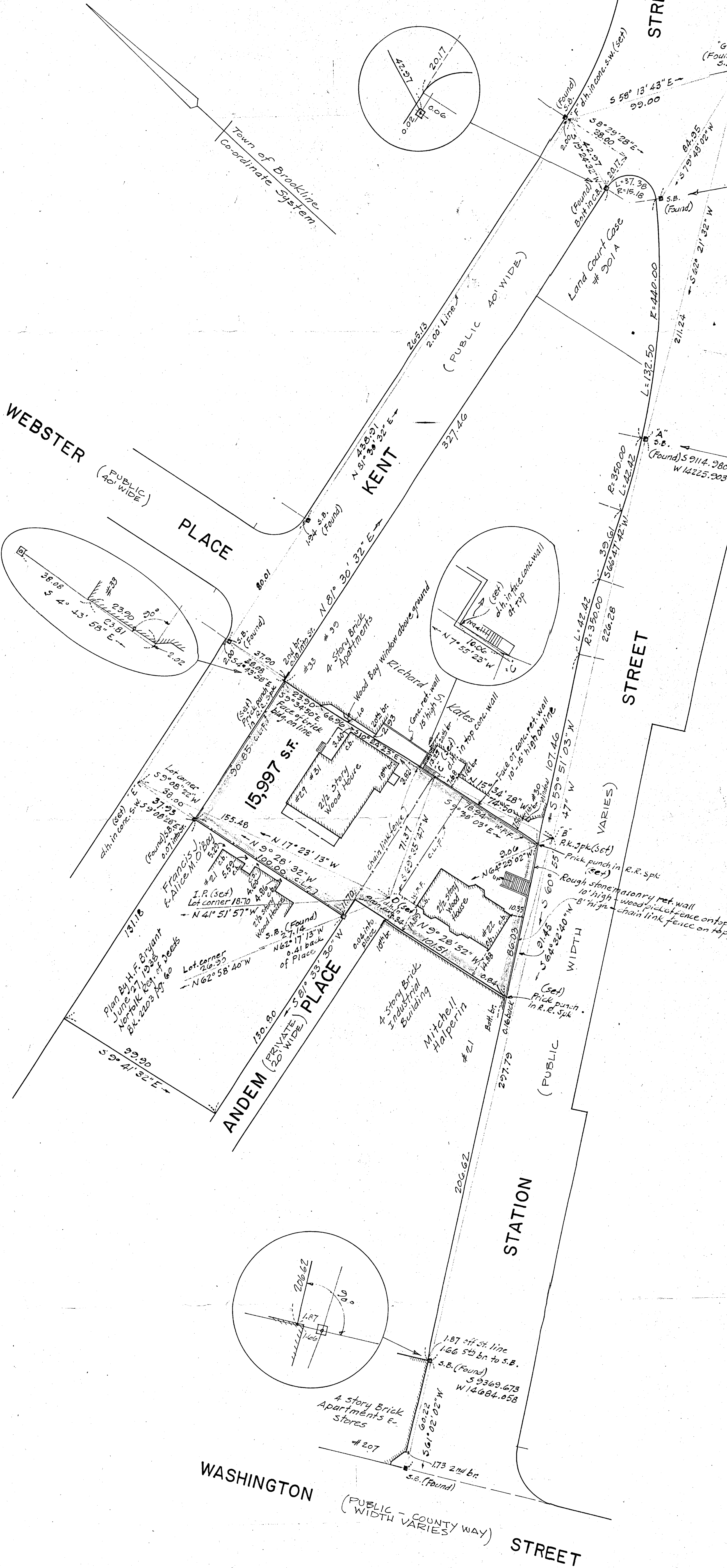


38477
Reg.



ADJUSTED FIELD TRAVERSE

Sta.	Bearing	Distance	N-	S+	E-	W+
A-B	S 60° 55' 47" W	226.28		109.945		197.774
B-C	N 15° 34' 28" W	74.50	71.765			20.003
C-D	S 69° 35' 47" W	71.37		24.882		66.892
D-E	N 17° 23' 13" W	155.48	148.376			46.461
E-F	N 81° 30' 32" E	438.91		64.808	434.099	
F-G	S 58° 13' 43" E	99.00		52.127	84.165	
G-A	S 62° 21' 32" W	211.24		98.001		187.131
			284.949	284.955	518.264	518.261

PROPERTY LINE TRAVERSE

Bearing	Distance	N-	S+	E-	W+
N 81° 30' 32" E	90.85	13.415		89.854	
S 9° 34' 50" E	23.90		23.567	3.978	
S 10° 24' 32" E	66.96		65.859	12.095	
S 9° 38' 03" E	78.94		77.827	13.211	
S 59° 51' 03" W	86.03		43.209		74.392
N 9° 28' 32" W	101.51	100.125			16.711
S 81° 33' 30" W	11.70		1.718		11.573
N 9° 28' 32" W	100.00	98.636			16.463
		212.176	212.180	119.138	119.139

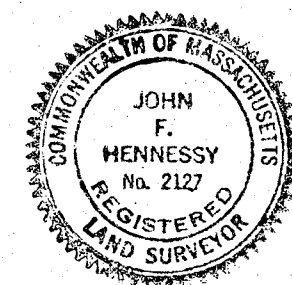
I hereby certify that the property lines shown on this plan are the lines dividing existing ownerships, and the lines of the streets and ways shown are those of public or private streets or ways already established, and that no new lines for division of existing ownership or for new ways are shown.

John F. Hennessy
Date: July 31, 1973

I certify that this actual survey was made on the ground in accordance with the Land Court Instructions of 1971 between June 29, 1973 and July 10, 1973.

Date: July 31, 1973

John F. Hennessy



PLAN OF LAND
BROOKLINE, MASS.

Scale - 1 in. = 30 ft. July 31, 1973
John F. Hennessy, Civil Eng'r
4 Cypress St. Brookline, Mass.