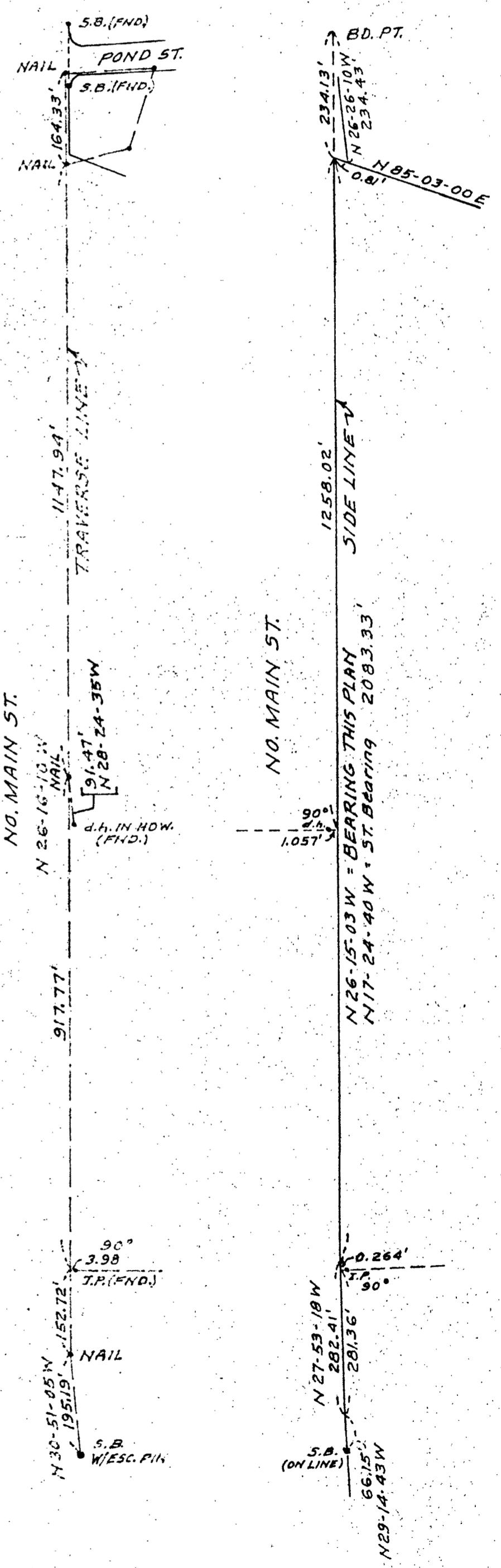
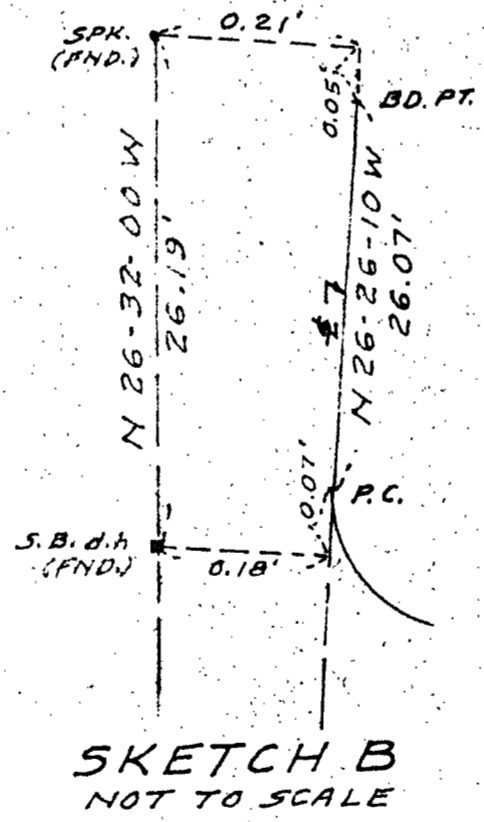
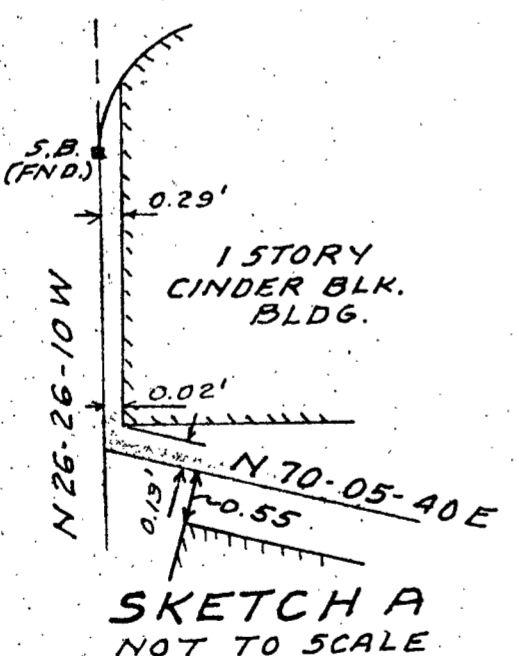
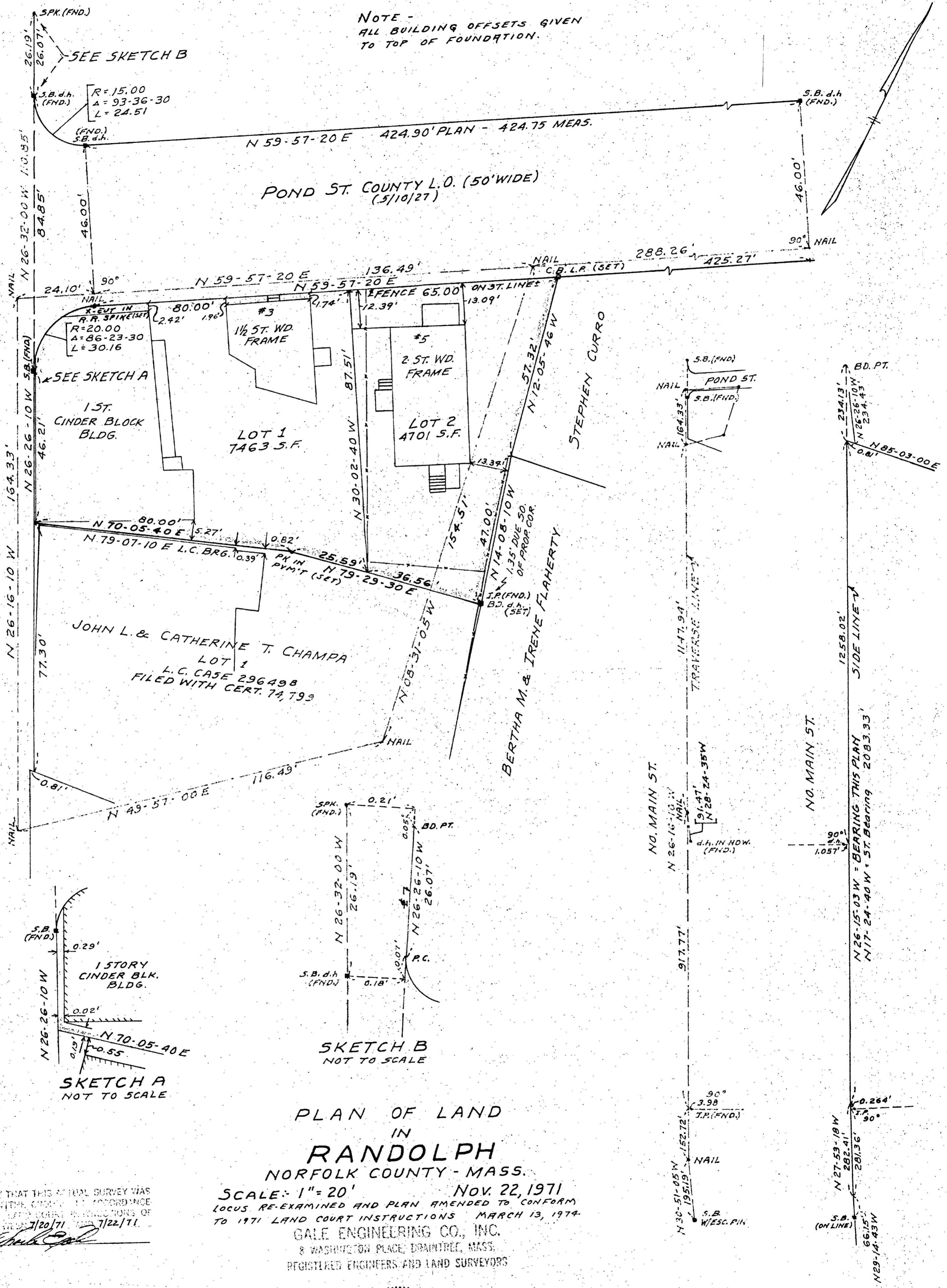


NOTE - ALL BUILDING OFFSETS GIVEN TO TOP OF FOUNDATION.

NO. MAIN ST. 1930 ALTERATION OF S.H.L.O. (PUBLIC - 66' WIDE)



PLAN OF LAND
IN
RANDOLPH
NORFOLK COUNTY - MASS.

SCALE: 1" = 20' Nov. 22, 1971
LOCUS RE-EXAMINED AND PLAN AMENDED TO CONFORM TO 1971 LAND COURT INSTRUCTIONS MARCH 13, 1974

GALE ENGINEERING CO., INC.
8 WASHINGTON PLACE, DRAINTREE, MASS.
REGISTERED ENGINEERS AND LAND SURVEYORS

I CERTIFY THAT THIS SURVEY WAS MADE BY THE ENGINEER IN ACCORDANCE WITH THE LAND COURT INSTRUCTIONS OF 1959, REVISED 7/20/71 AND 7/22/71.

I hereby certify that the property lines shown on this plan are the lines dividing land ownership and the lines of the streets and ways shown are those of public or private streets or ways as established, and that no new lines for division of land or for new streets or ways are shown.

