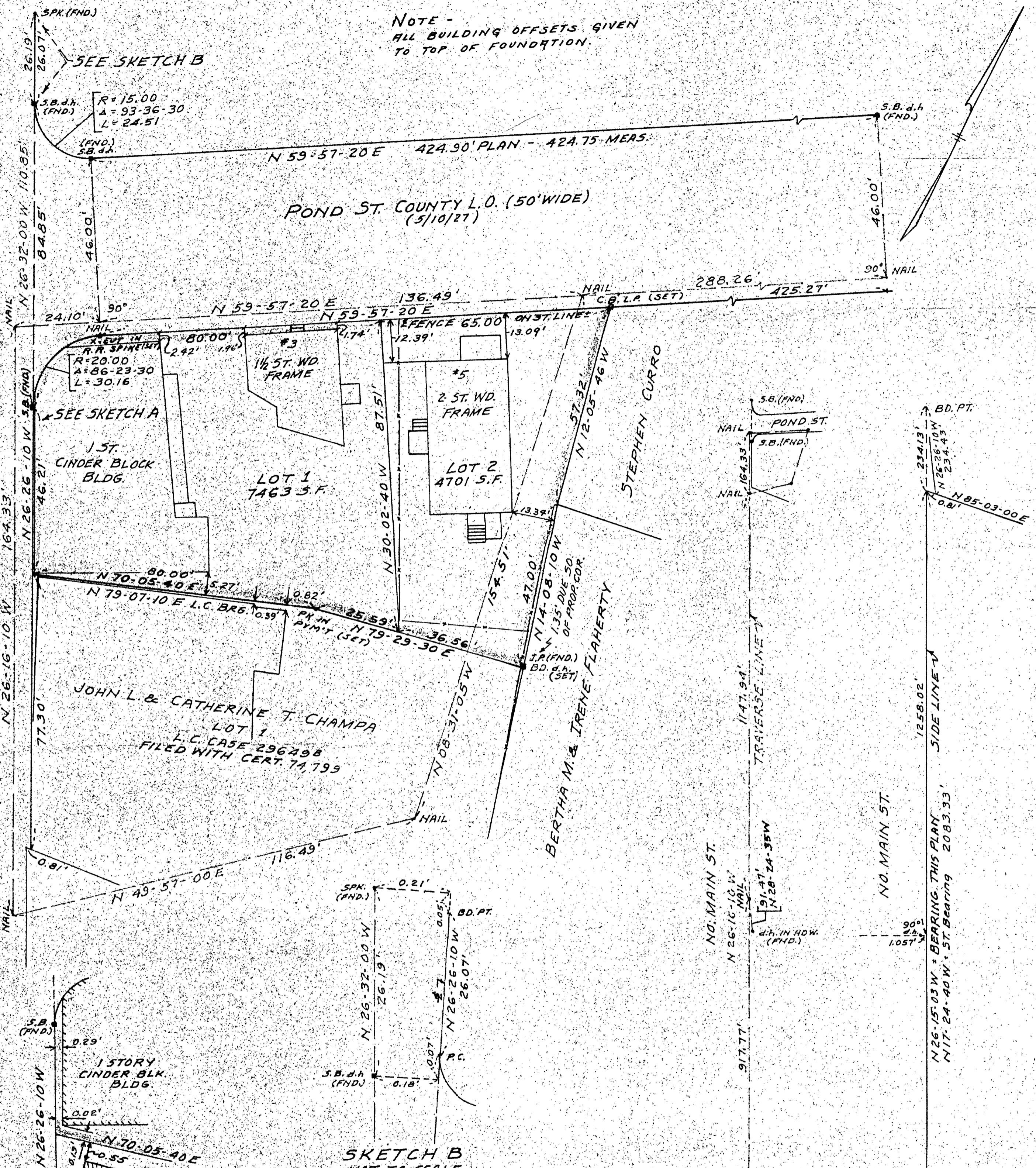


NOTE - ALL BUILDING OFFSETS GIVEN TO TOP OF FOUNDATION.



NO. MAIN ST. 1930 ALTERATION OF S.H.L.O. (PUBLIC - 66' WIDE)

POND ST. COUNTY L.O. (50' WIDE) (5/10/27)

SEE SKETCH A

SEE SKETCH B

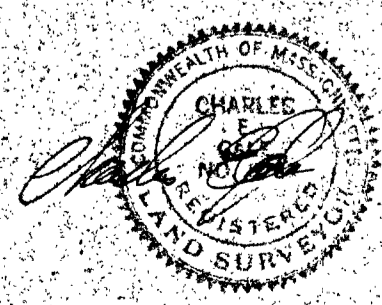
SKETCH A NOT TO SCALE

SKETCH B NOT TO SCALE

PLAN OF LAND IN RANDOLPH NORFOLK COUNTY - MASS.

SCALE: 1" = 20' Nov. 22, 1971 LOCUS RE-EXAMINED AND PLAN AMENDED TO CONFORM TO 1971 LAND COURT INSTRUCTIONS MARCH 13, 1974

GALE ENGINEERING CO., INC. 8 WASHINGTON PLACE, DRAINTREE, MASS. REGISTERED ENGINEERS AND LAND SURVEYORS



I CERTIFY THAT THIS SURVEY WAS MADE ON THE GROUND IN ACCORDANCE WITH THE LAND COURT INSTRUCTIONS OF 1971 BETWEEN 7/20/71 AND 7/22/71

I hereby certify that the property lines shown on this plan are the lines existing on the date of this plan and that the lines of the streets and ways shown are those of public or private streets or ways as established, and that no new lines for division of land or townships for new ways are shown

SUB-SKETCH SHOWING NO. MAIN ST. CONTROLS SCALE: 1" = 200'