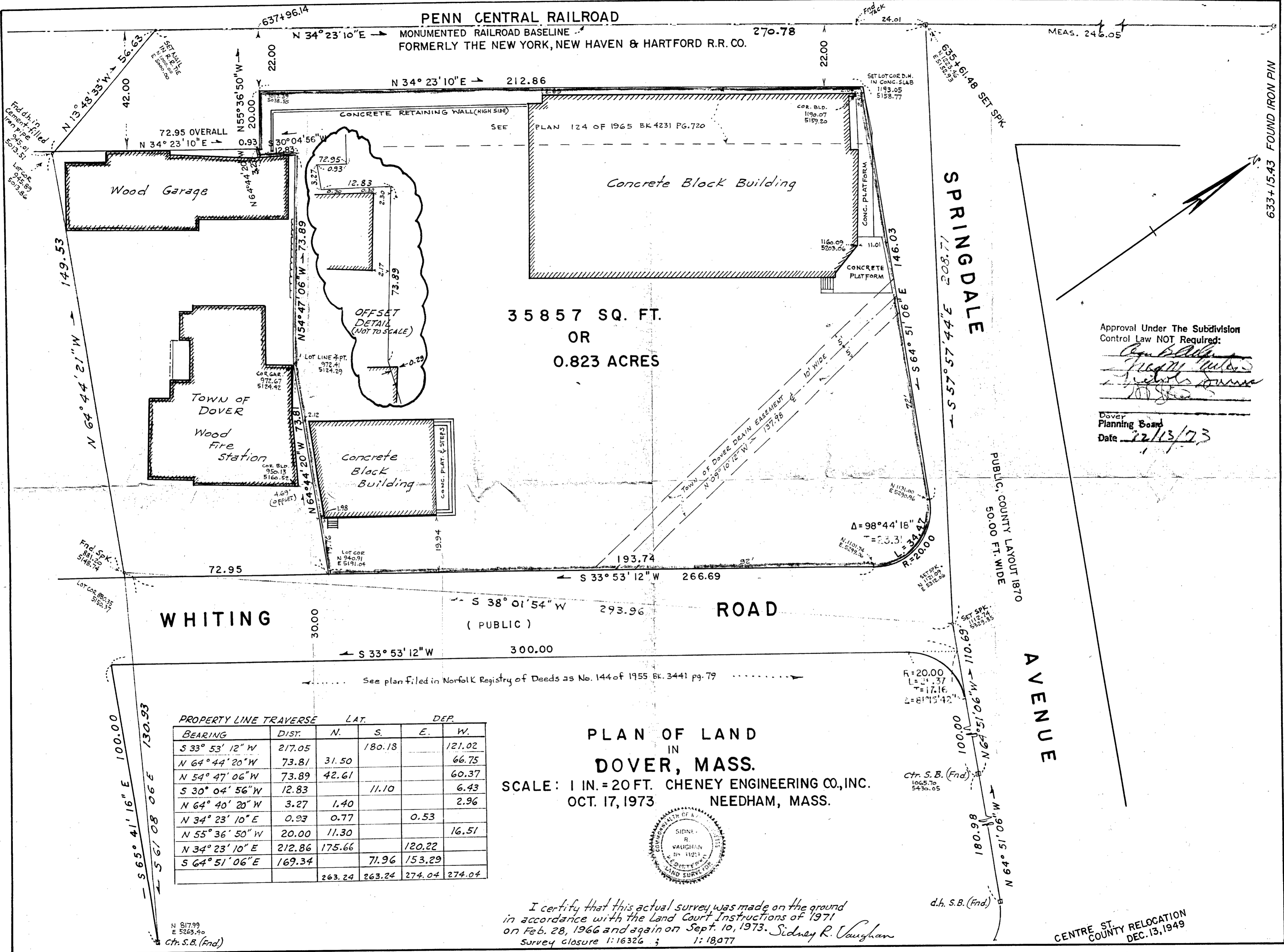


PENN CENTRAL RAILROAD

MONUMENTED RAILROAD BASELINE  
FORMERLY THE NEW YORK, NEW HAVEN & HARTFORD R.R. CO.



35857 SQ. FT.  
OR  
0.823 ACRES

Approval Under The Subdivision  
Control Law NOT Required:

*[Signatures]*

Dover  
Planning Board  
Date 12/13/73

WHITING

ROAD

SPRINGDALE

AVENUE

BEARING	DIST.	LAT.		DEP.	
		N.	S.	E.	W.
S 33° 53' 12" W	217.05		180.18		121.02
N 64° 44' 20" W	73.81	31.50			66.75
N 54° 47' 06" W	73.89	42.61			60.37
S 30° 04' 56" W	12.83		11.10		6.43
N 64° 40' 20" W	3.27	1.40			2.96
N 34° 23' 10" E	0.93	0.77		0.53	
N 55° 36' 50" W	20.00	11.30			16.51
N 34° 23' 10" E	212.86	175.66		120.22	
S 64° 51' 06" E	169.34		71.96	153.29	
		263.24	263.24	274.04	274.04

PLAN OF LAND  
IN  
DOVER, MASS.  
SCALE: 1 IN. = 20 FT. CHENEY ENGINEERING CO., INC.  
OCT. 17, 1973 NEEDHAM, MASS.



I certify that this actual survey was made on the ground  
in accordance with the Land Court Instructions of 1971  
on Feb. 28, 1966 and again on Sept. 10, 1973. Sidney R. Vaughan  
Survey closure 1:16326 ; 1:18,077

CENTRE ST.  
COUNTY RELOCATION  
DEC. 13, 1949