

I certify that this plan shows the property lines that are the lines of existing ownerships, and the lines of streets and ways shown are those of public or private streets or ways already established, and that no new lines for division of existing ownership or for new ways are shown.

Date October 15, 1973

John J. Regan
Registered Land Surveyor

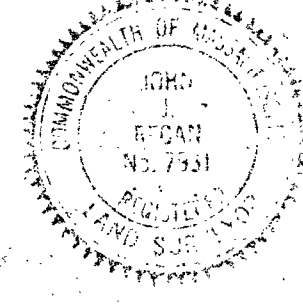
PLAN OF LAND
IN
HOLBROOK MASS.

SCALE 1 IN = 20 FT
APEX ASSOCIATES
NEWTON HIGHLANDS

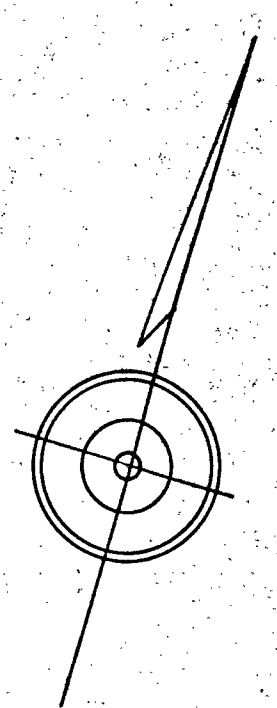
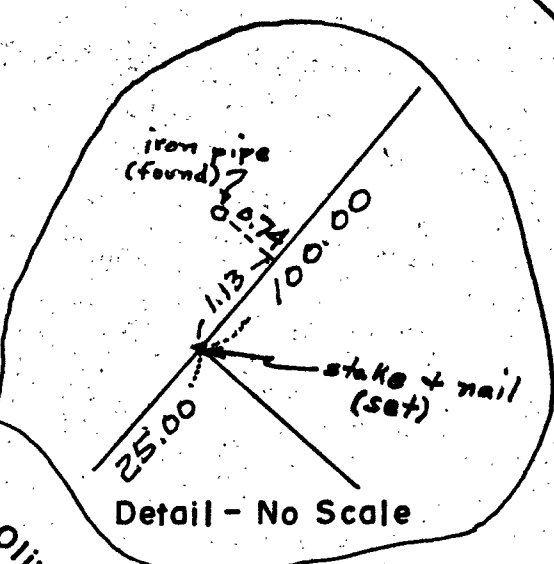
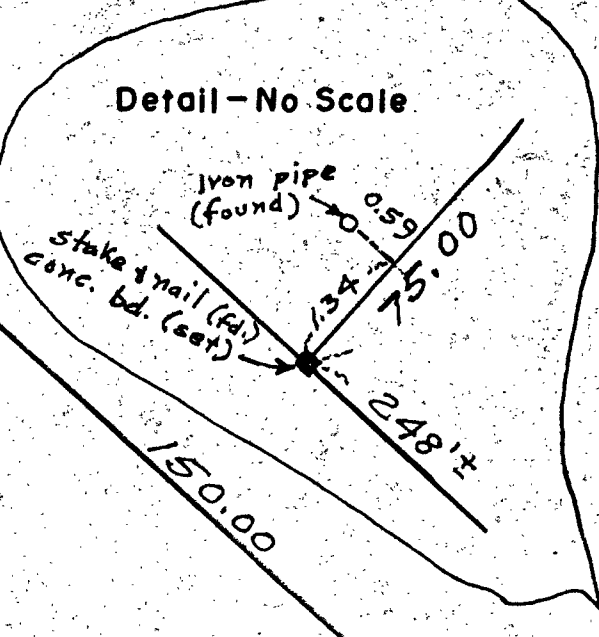
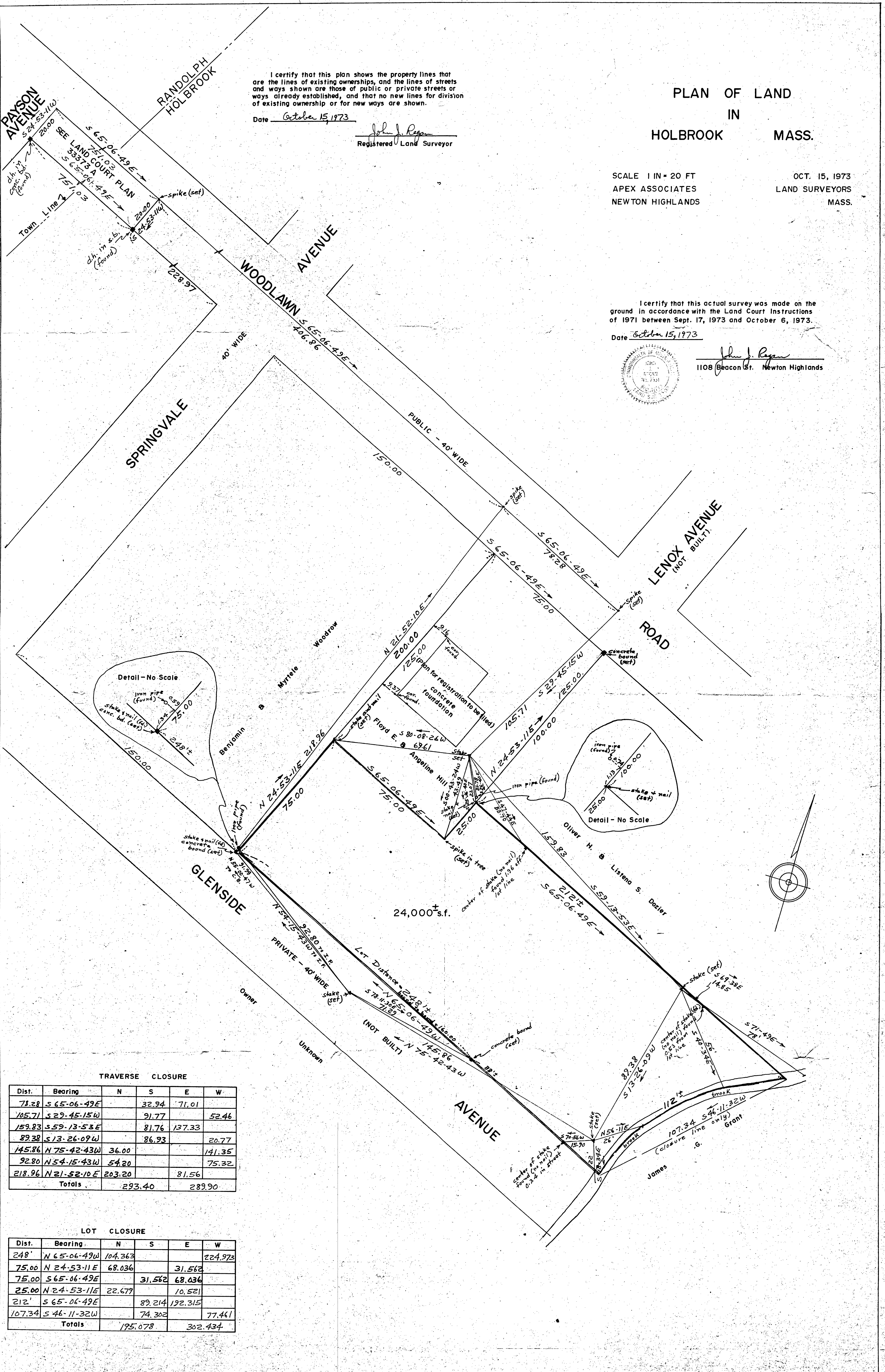
OCT. 15, 1973
LAND SURVEYORS
MASS.

I certify that this actual survey was made on the ground in accordance with the Land Court Instructions of 1971 between Sept. 17, 1973 and October 6, 1973.

Date October 15, 1973



John J. Regan
1108 Beacon St. Newton Highlands



TRAVERSE CLOSURE

Dist.	Bearing	N	S	E	W
78.28	S 65-06-49E		32.94	71.01	
105.71	S 29-45-15W		91.77		52.46
159.83	S 59-13-53E		81.76	137.33	
89.38	S 13-26-09W		86.93		20.77
145.86	N 75-42-43W	36.00			131.35
92.80	N 54-15-43W	54.20			75.32
218.96	N 21-52-10E	203.20		81.56	
Totals		293.40		289.90	

LOT CLOSURE

Dist.	Bearing	N	S	E	W
248'	N 65-06-49W	104.363			224.973
75.00	N 24-53-11E	68.036		31.562	
75.00	S 65-06-49E		31.562	68.036	
25.00	N 24-53-11E	22.677		10.521	
212'	S 65-06-49E		89.214	192.315	
107.34	S 46-11-32W		74.302		77.461
Totals		195.078		302.434	