

BAY STREET

HARBOR VIEW ST. (Private 20.00' Wide)

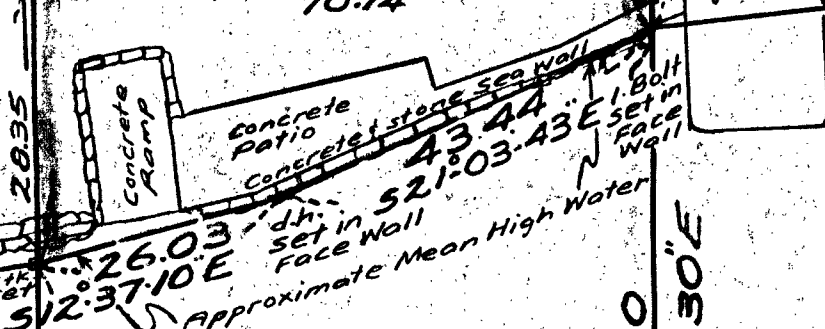
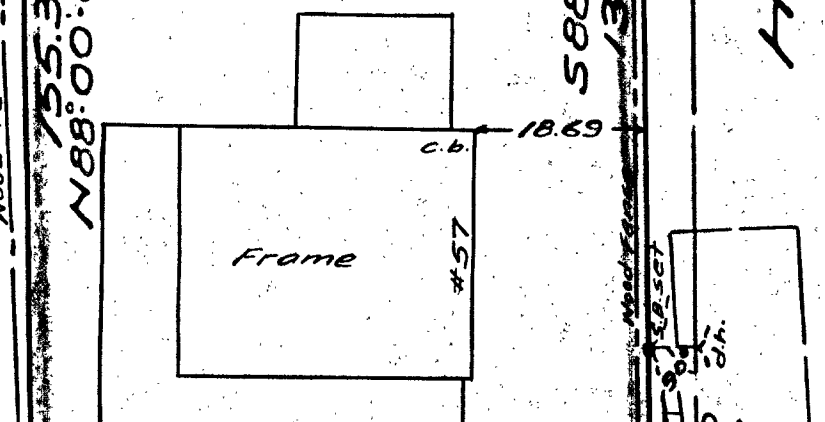
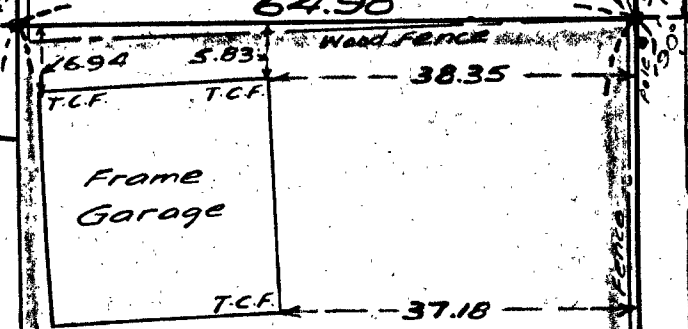
John Andrews
et ux. Eleanor C.

Richard E. Morris
et ux. Eleanor L.

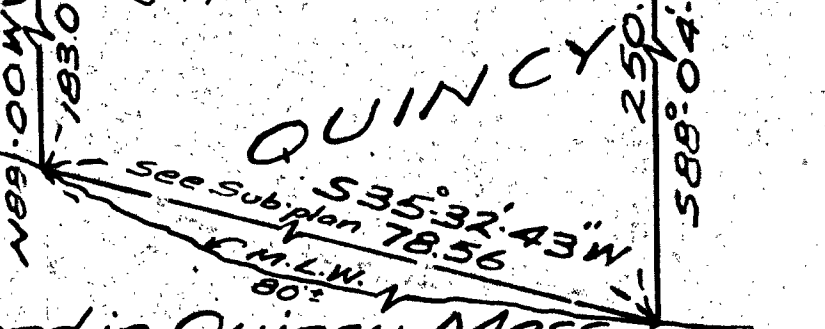
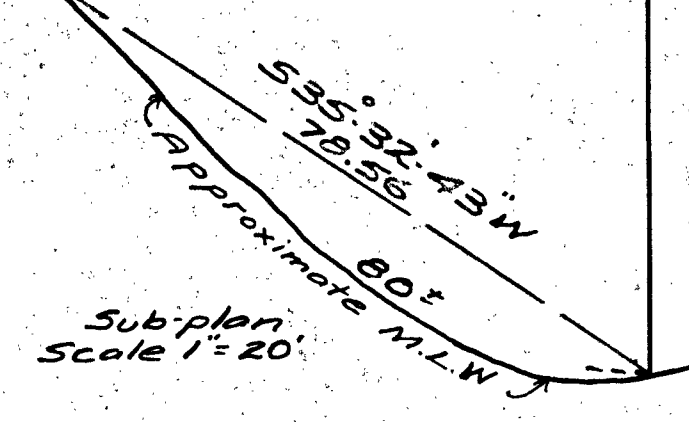
Richard J.
McCormick

Robert L. Harrow
et ux. Shirley A.

Fred E. Bergfors
et ux. Margaret



Total Area = 23,900 s.f.
Upland = 9,428 s.f.



Plan of Land in Quincy, Mass.
Scale 20 feet to an inch
Aug 21, 1973
Ernest W. Branch Inc., Civil Engineers
Adams Building, 1354 Hancock St., Quincy

APPROVAL UNDER SUBDIVISION
CONTROL LAW NOT REQUIRED
DATE 8/21/73
[Signature]
Planning Director

I certify that this actual survey was made on
the ground in accordance with the Land Court
Instructions of 1971 during July & Aug., 1973.
Aug 21, 1973: *[Signature]* Engineer

