

PLAN OF LAND IN SHARON

Scale: 80 feet to an inch
 Francis McHugh, Surveyor
 September 11, 1973

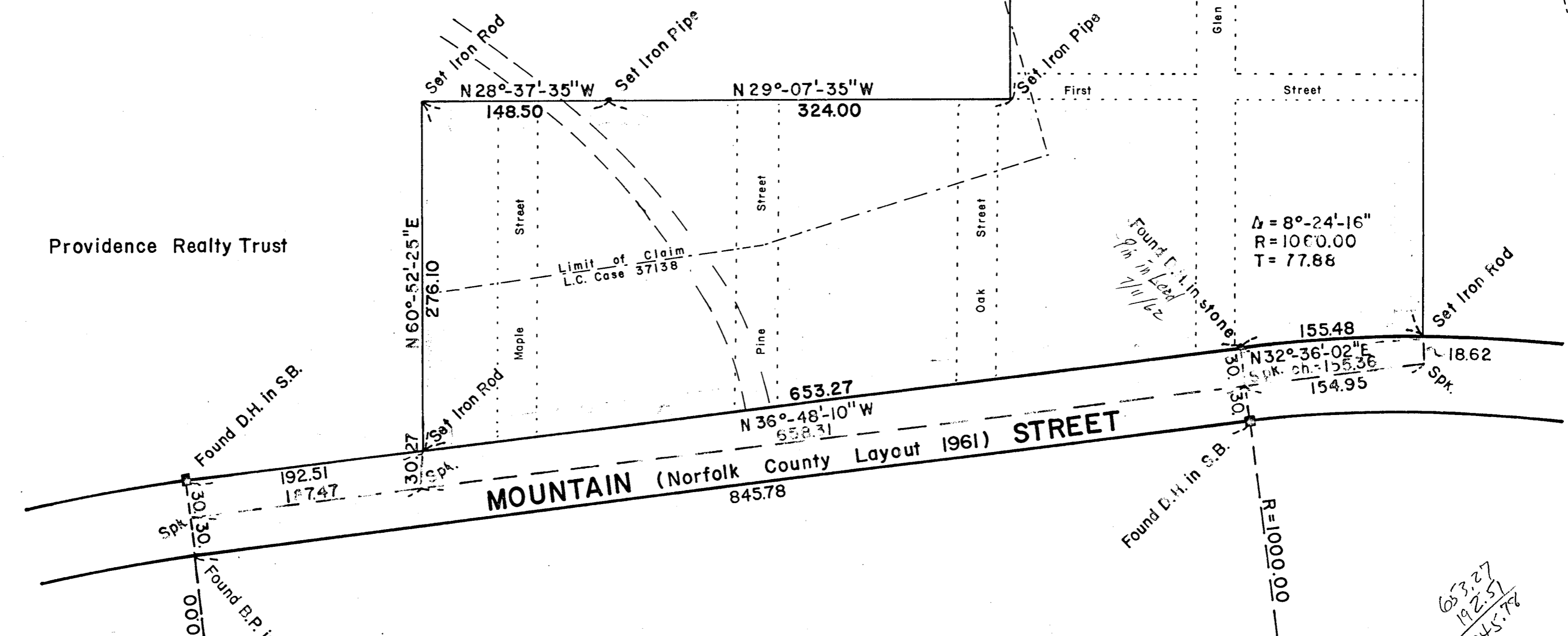
I certify that this actual survey was made on the ground in accordance with the Land Court Instructions of 1971 between August 4, 1973 and August 31, 1973.

Francis McHugh
 39 Cornell St.
 Roslindale, Mass.

Course	Distance	N	S	E	W
N60°-52'-25"E	276.10	134.388		241.187	
S28°-37'-35"E	148.50		130.348	71.146	
S29°-07'-35"E	324.00		283.030	157.703	
N60°-52'-25"E	1000.00	486.737		873.548	
S29°-07'-35"E	330.00		288.271	160.623	
S60°-52'-25"W	1178.126		573.437		1029.150
N32°-36'-37"W	chord 155.364	130.886			83.707
N36°-48'-10"W	653.27	523.075			391.350
		1275.086	1275.086	1504.207	1504.207

Land Court Case No. 37138
 Providence Realty Trust

507,808 Sq. Ft.
 11.6 Acres



Chapter 380 Acts of 1966 Cert. for Land Court plans

"I hereby certify that the property lines shown on this plan are the lines dividing existing ownerships, and the lines of the streets and ways shown are those of public or private streets or ways already established, and that no new lines for division of existing ownership or for new ways are shown."

(Signed) *Francis McHugh*
 Registered Land Surveyor
 Date September 11, 1973

*653.27
 192.51
 845.78*