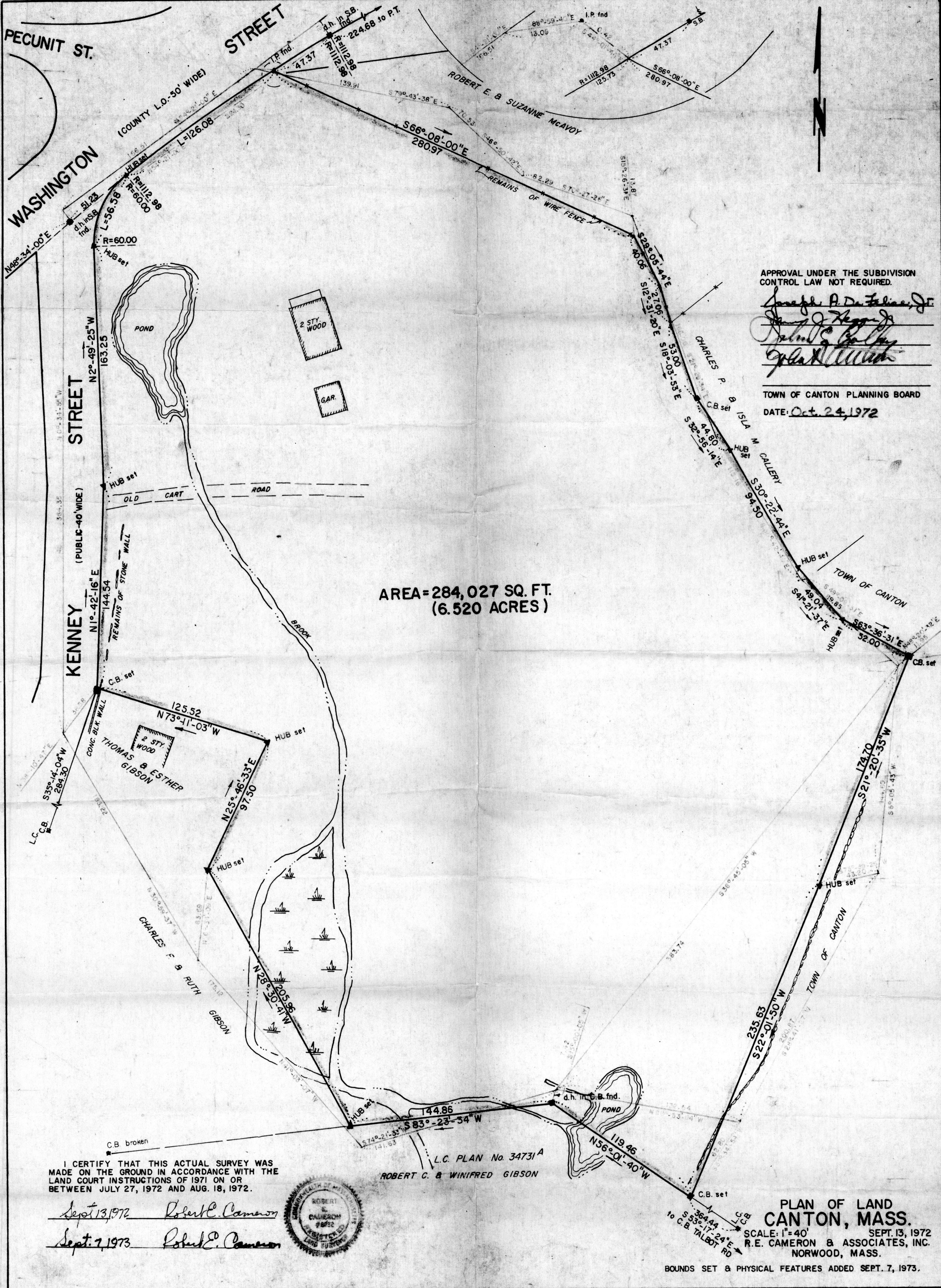


5/23
/26.08
47.37
224.68



APPROVAL UNDER THE SUBDIVISION CONTROL LAW NOT REQUIRED.

Joseph A. De Felice, Jr.
James J. Higgins
Robert C. Gibson
John H. Talbot

TOWN OF CANTON PLANNING BOARD
DATE: Oct. 24, 1972

AREA = 284,027 SQ. FT.
(6.520 ACRES)

I CERTIFY THAT THIS ACTUAL SURVEY WAS MADE ON THE GROUND IN ACCORDANCE WITH THE LAND COURT INSTRUCTIONS OF 1971 ON OR BETWEEN JULY 27, 1972 AND AUG. 18, 1972.

Sept. 13, 1972 *Robert C. Cameron*
Sept. 7, 1973 *Robert C. Cameron*



L.C. PLAN No. 34731A
ROBERT C. & WINIFRED GIBSON

PLAN OF LAND CANTON, MASS.
 SCALE: 1" = 40'
 SEPT. 13, 1972
 R.E. CAMERON & ASSOCIATES, INC.
 NORWOOD, MASS.

BOUNDS SET & PHYSICAL FEATURES ADDED SEPT. 7, 1973.