

38056A

# PLAN OF LAND RANDOLPH, MASS.

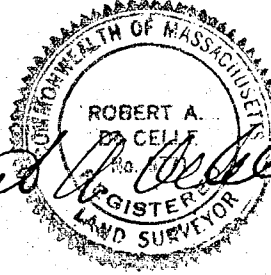
SCALE 1 1/2" = 40' JUNE 25, 1973

DECA ENGINEERING, INC.

LAND SURVEYORS

301 No. MAIN ST. RANDOLPH

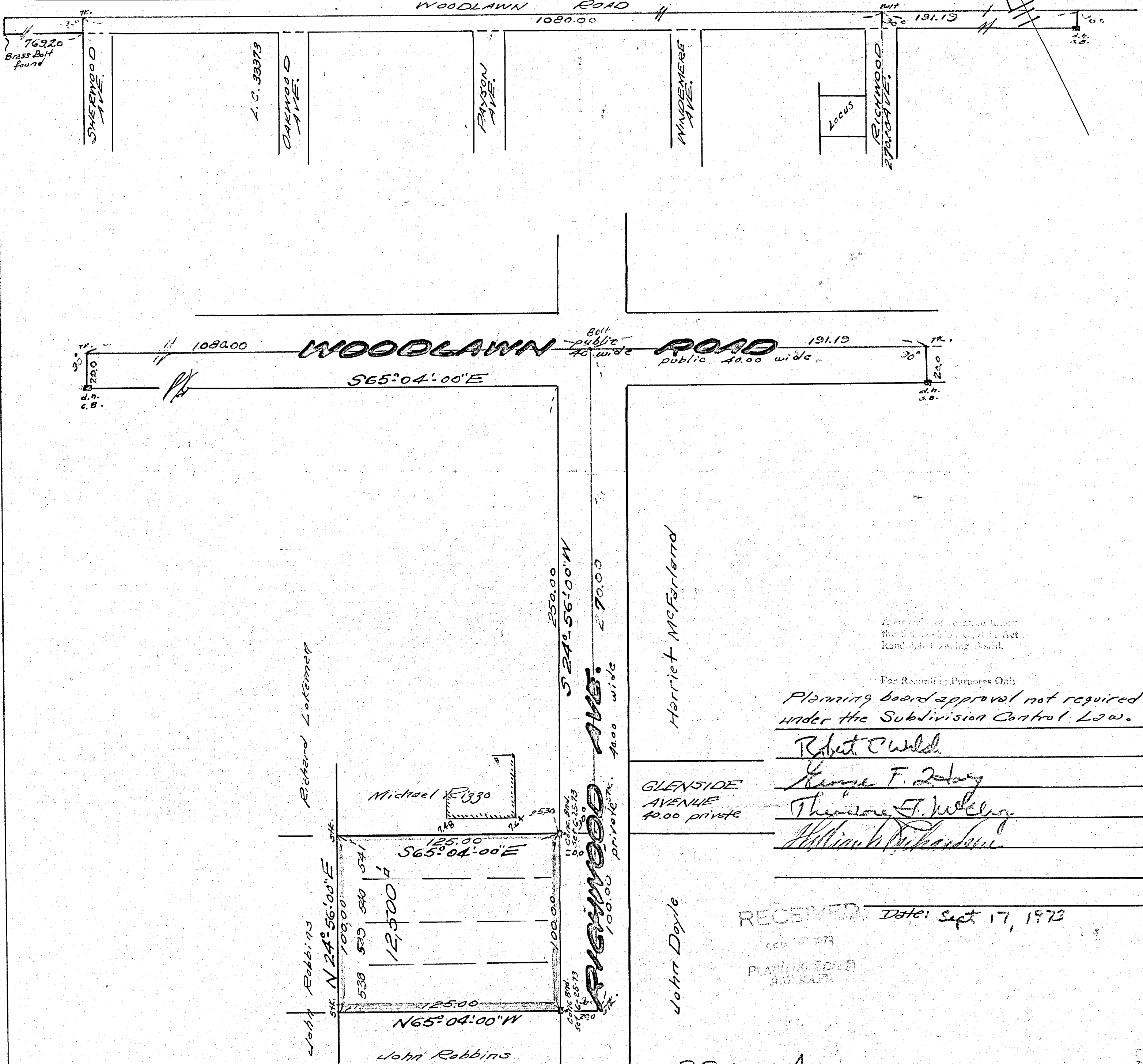
Property Owner:  
Phyllis Beam  
Randolph, Mass.



I certify that this actual survey was made  
on the ground in accordance with the  
Land Court Instructions of 1971  
on June 21, 1973

Robert A. DeWelle

Not drawn to scale



Approved as required under  
the Subdivision Control Act  
Randolph Planning Board.

For Recording Purposes Only

Planning board approval not required  
under the Subdivision Control Law.

Robert A. DeWelle

George F. Zolary

Theodore F. Wilsey

William J. Richardson

RECEIVED

Date: Sept 17, 1973

SEP 17 1973

PLANNING BOARD  
RANDOLPH

38056A

MAY BE  
FILED  
Date Oct. 1, 1973  
By R.C.C.  
Atlas Randolph SH. 73  
Trav.  Sts.   
Rfs.  Cnk. Sts.   
 Prints Needed TWO

DECREE PLAN  
Order \_\_\_\_\_ Papers \_\_\_\_\_  
Traverse filed \_\_\_\_\_  
Atlas \_\_\_\_\_  
Drawn by \_\_\_\_\_  
Plotted by \_\_\_\_\_  
Inspected by \_\_\_\_\_  
Approved \_\_\_\_\_

LAND COURT  
FILED

38056A