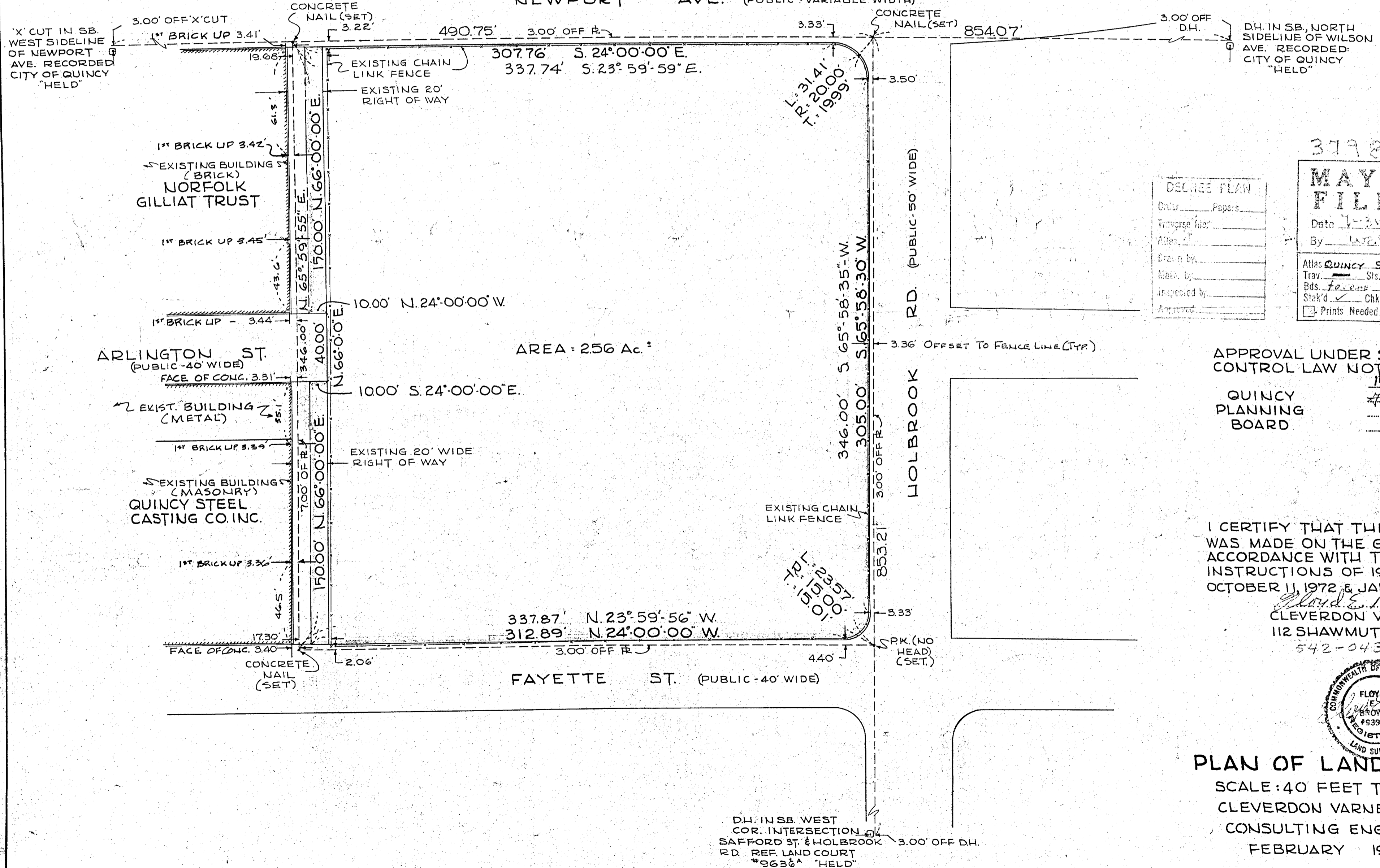


37982A

37982A

NEWPORT AVE. (PUBLIC - VARIABLE WIDTH)



AREA = 256 Ac. ±

NORFOLK GILLIAT TRUST

QUINCY STEEL CASTING CO. INC.

DESCRIBE PLAN	
Order	_____ Papers
Transverse	_____
Atlas	_____
Drawn by	_____
Made by	_____
Inspected by	_____
Approved	_____

37982

**MAYBE FILED**

Date 1-23-73

By WES

Atlas QUINCY SH. 10

Trav. Sts. 100

Bds. 1000

Stak'd ✓ Chk. Sh. ---

Prints Needed two

APPROVAL UNDER SUBDIVISION CONTROL LAW NOT REQUIRED

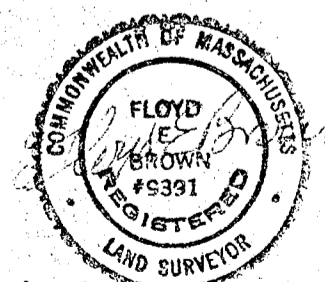
QUINCY PLANNING BOARD

*M. J. Jackson*

I CERTIFY THAT THIS ACTUAL SURVEY WAS MADE ON THE GROUND IN ACCORDANCE WITH THE LAND COURT INSTRUCTIONS OF 1971 BETWEEN OCTOBER 11, 1972 & JANUARY 22, 1973.

*Floyd E. Brown*

CLEVERDON VARNEY & PIKE  
112 SHAWMUT AVE., BOSTON  
542-0438



**PLAN OF LAND IN QUINCY**  
SCALE: 40 FEET TO AN INCH  
CLEVERDON VARNEY & PIKE  
CONSULTING ENGINEERS  
FEBRUARY 1973

D.H. IN SB. WEST COR. INTERSECTION SAFFORD ST. & HOLBROOK RD. REF. LAND COURT #9636A 'HELD'