

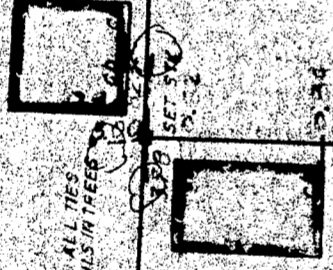
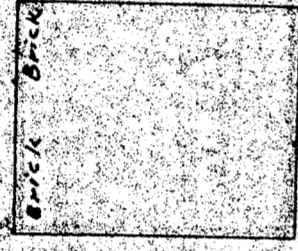
A D A M S

(PUBLIC - 50' WIDE)

STREET

STREET

LAWRENCE B MAVIS GIONET



GERALD A. AUDLEE JR.

HUGO D MINUCCI

CLAPP



I certify that this actual survey was made on the ground in accordance with the Land Court Instructions of 1959 on March 24, 1970.

James Bulliam

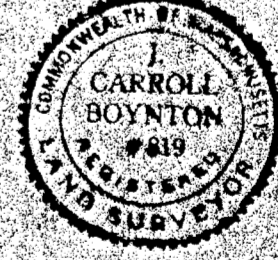
I certify that the conditions on the ground today are the same as when surveyed.

James Bulliam
Registered Land Surveyor

Date 3-15-73

I certify that the property lines shown are the lines dividing existing ownerships, and the lines of streets and ways shown are those of public or private streets or ways already established, and that no new lines for division of existing ownership or for new ways are shown.

James Bulliam
Registered Land Surveyor
3-15-73



LAND COURT PLAN OF LAND IN STOUGHTON

OWNED BY
JOSE F. PIMENTEL AND CARMINA F. PIMENTEL
SCALE 1"=20'
MAY 6, 1973
HAYWARD, BOYNTON & WILLIAMS, INC.
ENGINEERS SURVEYORS
47 WEST ELM. ST. BROCKTON