

PROPERTY TRAVERSE					
	N	S	E	W	
5 14°-33'-05" W	26.71		25.863		6.710
5 44°-38'-15" W	43.43		30.903		30.514
N 45°-21'-45" W	128.21	90.09			91.229
5 75°-26'-55" E	132.70		33.340	128.45	
		90.09	90.09	128.45	128.45

CERTIFICATION

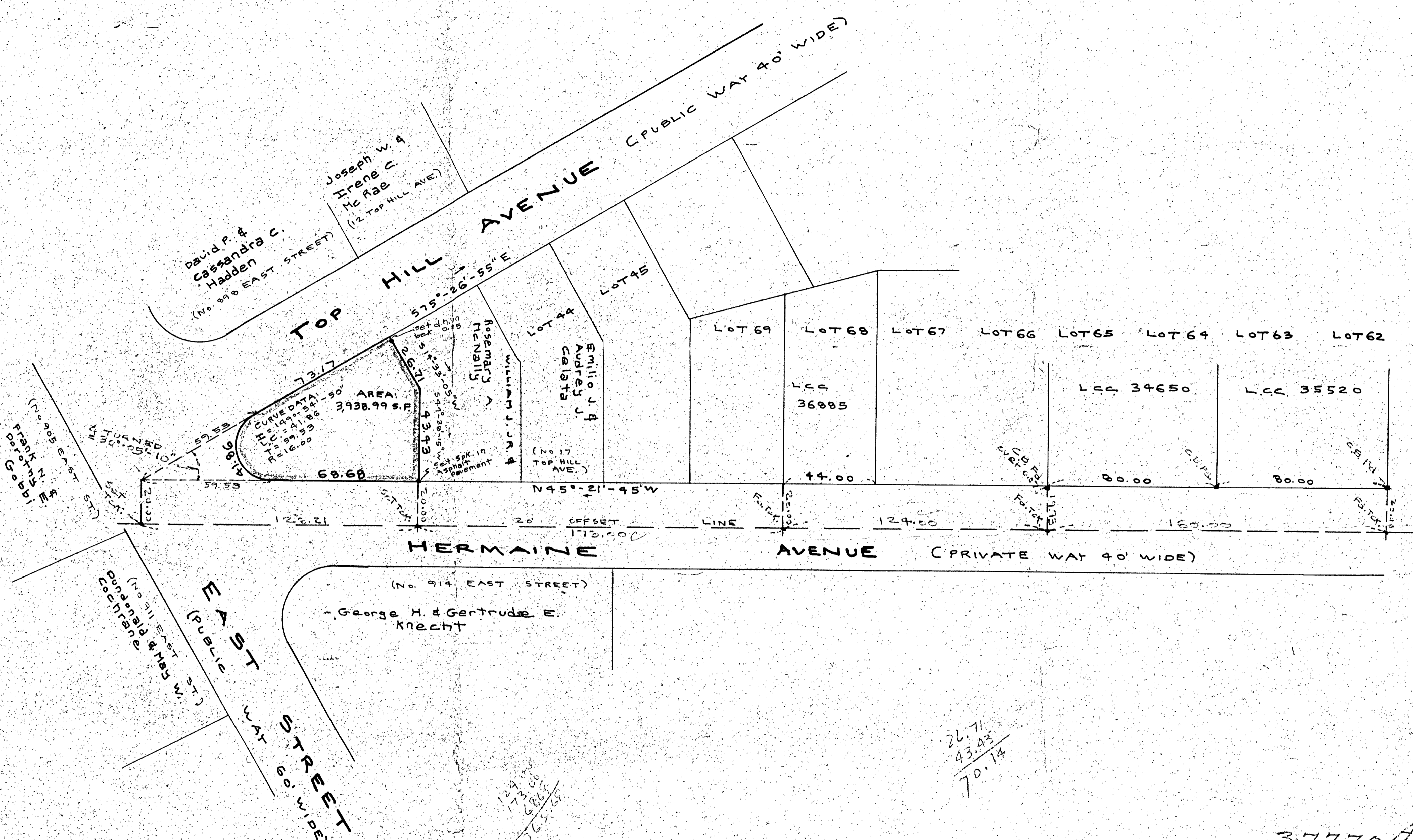
I CERTIFY THAT THIS ACTUAL SURVEY WAS MADE ON THE GROUND IN ACCORDANCE WITH THE LAND COURT INSTRUCTIONS OF 1971 ON MARCH 24, 1970.
 Donald J. Fox, R.L.S.
 JANUARY 12, 1973.

CERTIFICATION

I CERTIFY THAT THE CONDITIONS ON THE GROUND ARE THE SAME NOW AS AT THE TIME OF THE ORIGINAL SURVEY.
 JANUARY 12, 1973
 Donald J. Fox, R.L.S.

CERTIFICATION

I HEREBY CERTIFY THAT THE PROPERTY LINES SHOWN ON THIS PLAN ARE THE LINES DIVIDING EXISTING OWNERSHIPS AND THE LINES OF THE STREETS AND WAYS SHOWN ARE THOSE OF PUBLIC OR PRIVATE STREETS OR WAYS ALREADY ESTABLISHED AND THAT NO NEW LINES FOR DIVISION OF EXISTING OWNERSHIP OR FOR NEW WAYS ARE SHOWN.
 Donald J. Fox
 JANUARY 13, 1973.



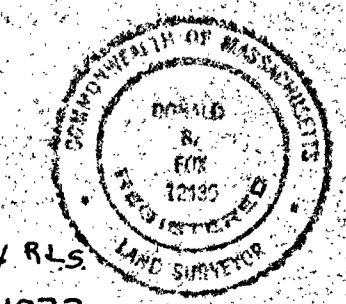
26.71
43.43
70.14

DECREE PLAN	
Order	Papers
Traverse filed	
Attes.	
Drawn by	
Math. by	
Inspected by	
Approved	

37770A
MAY BE FILED
 Date Feb. 15, 1973
 By J. Va.
 Attest
 Town Clerk
 Bus. Head Office
 State of Mass.
 Prints Needed TWO

FILED
 FEB 15 1973

PLAN OF LAND IN
 DEDHAM, MASS.
 Donald S. Fox-R.L.S.
 111 Sunset Rd. Carlisle, Mass.
 Scale: 1" = 30' January 12, 1973



Donald J. Fox, R.L.S.
 JANUARY 12, 1973