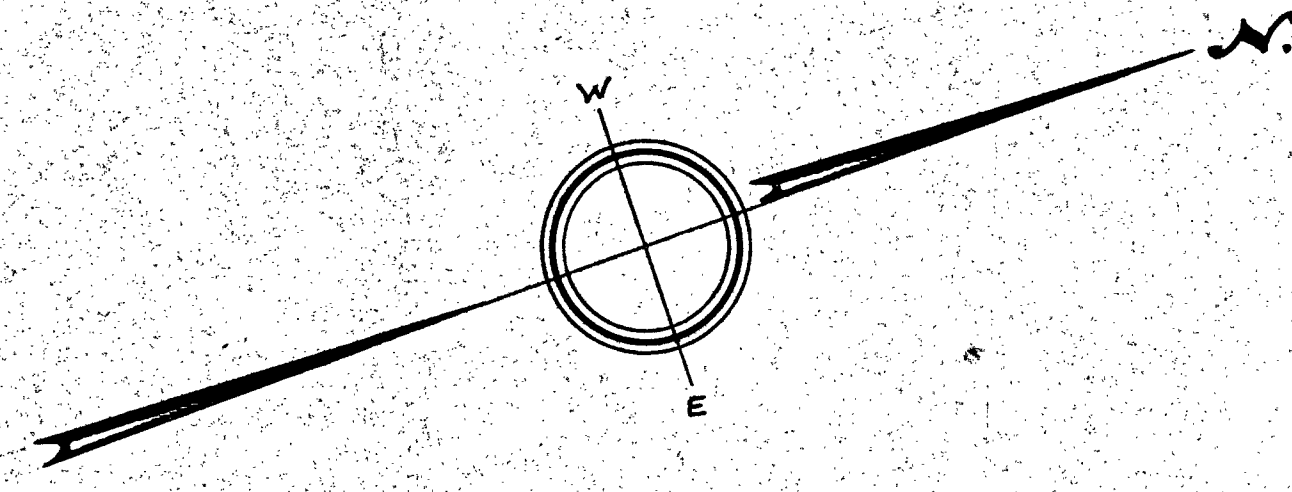
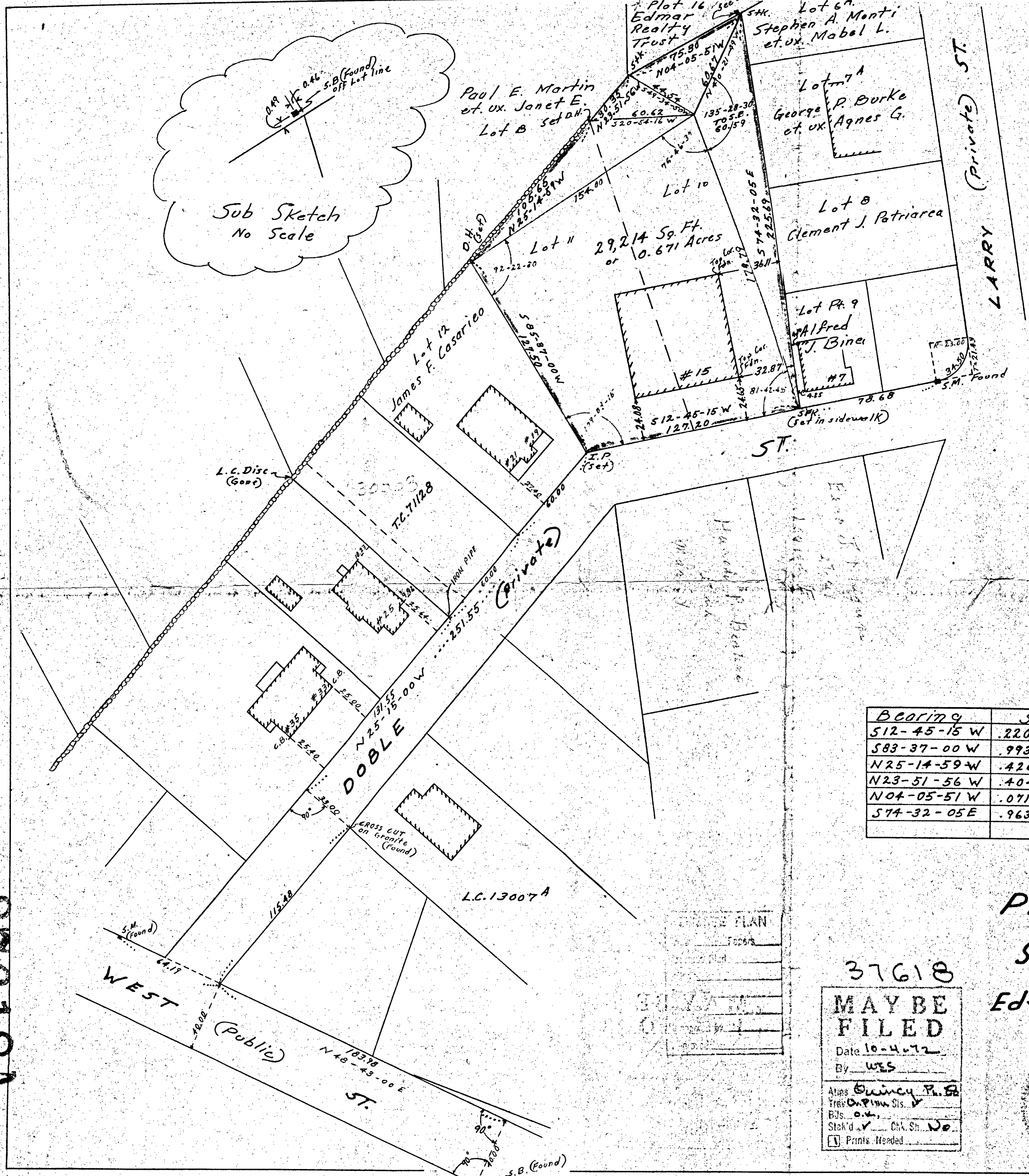
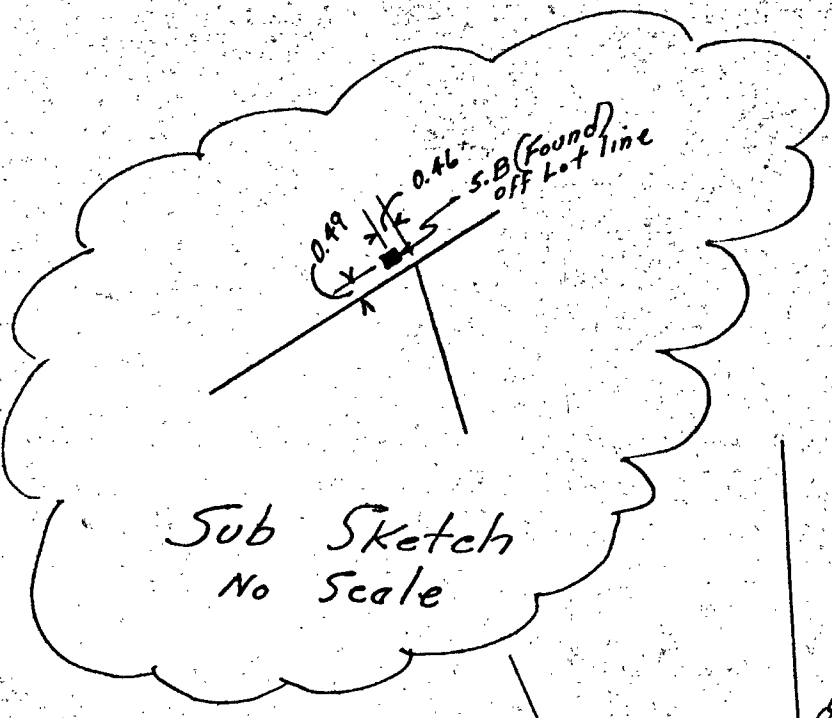


37618A



APPROVAL UNDER SUBDIVISION CONTROL LAW NOT REQUIRED.  
DATE: July 25 1972  
John A. Dwyer  
DIRECTOR OF PLANNING

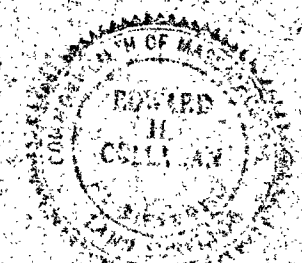
Bearing	Sine	Cosine	Dist.	N+	S-	E+	W-
S12-45-15 W	.2207683	.9753263	127.20		124.06		28.08
S83-37-00 W	.9938003	-.11117985	127.50		14.17		126.71
N25-14-59 W	.4265643	.9044572	105.65	95.56			45.07
N23-51-56 W	.4045918	.9144974	30.35	27.75			12.27
N04-05-51 W	.0714539	.9974439	75.30	75.10			5.38
S74-32-05 E	.9637922	.2666543	225.69		60.18	217.51	
				198.41	198.41	217.51	217.51

37618A

37618

MAY BE FILED  
Date 10-4-72  
By WES  
Atty Quincy P.R.B.  
Treas. O.P.M. Sis. ✓  
E.D.S. O.W.  
Stak'd ✓ Chk. Sh. No.  
Prints Needed

Plan of Land in Quincy  
Scale: 40 feet to an inch  
Edward H. Collagan Surveyor  
July 1972



I certify that this actual survey was made on the ground in accordance with Land Court instructions of 1971 between 5/6/72 and 6/30/72.  
Edward H. Collagan  
Registered Land Surveyor  
Quincy, Mass.