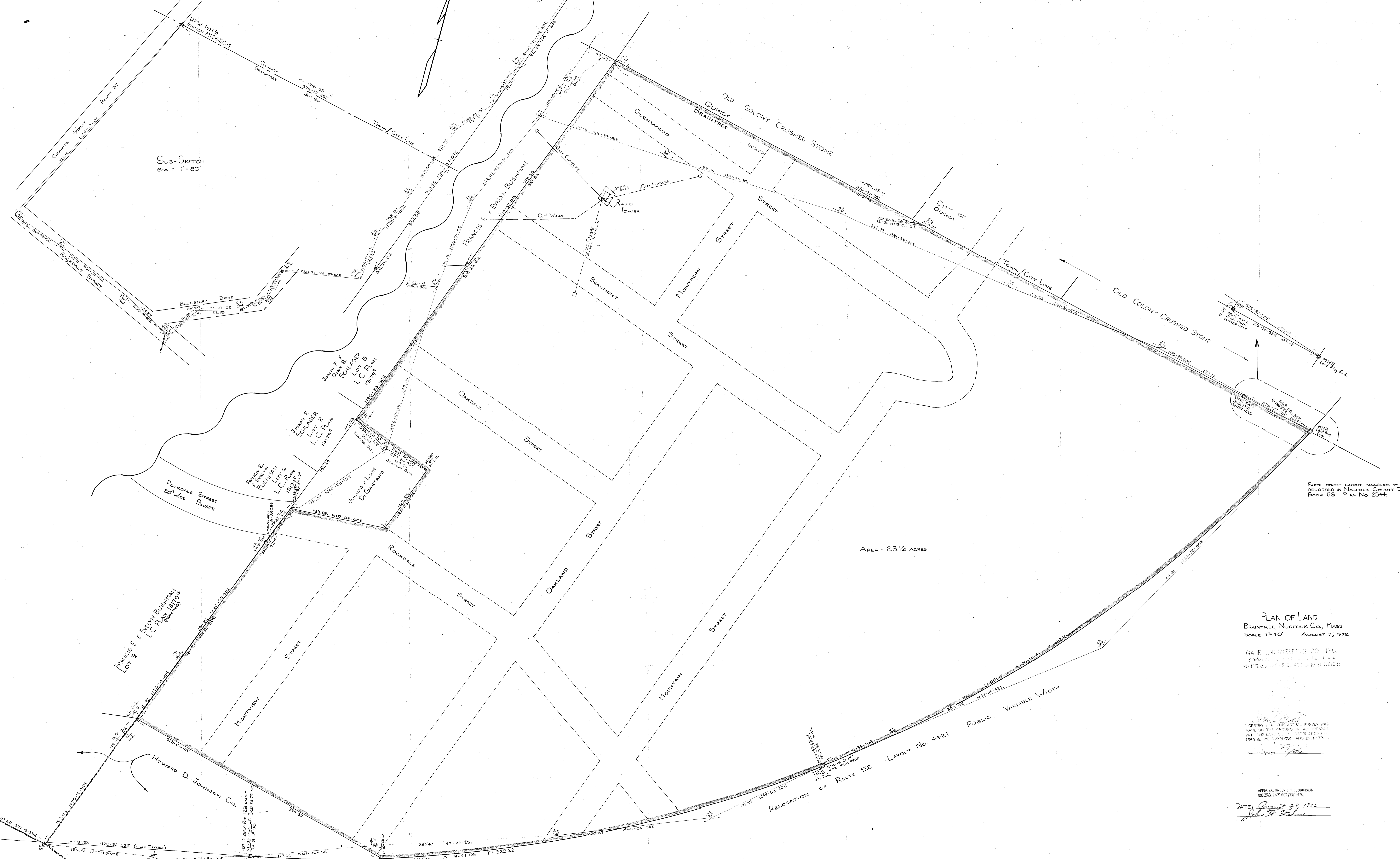


37584
Conf.



AREA = 23.16 ACRES

PLAN OF LAND
 BRAINTREE, NORFOLK CO., MASS.
 SCALE: 1" = 10' AUGUST 7, 1972

GALE ENGINEERING CO., INC.
 8 WASHINGTON STREET, BRAINTREE, MASS.
 REGISTERED ENGINEERS AND LAND SURVEYORS

I CERTIFY THAT THIS SURVEY WAS
 MADE ON THE EXACTLY AS SHOWN
 WITH THE LAND OWNERS OR PERSONS OF
 1969 REFERENCE 7-72 AND 8-10-72.

APPROVAL UNDER THE SUPERVISION
 OF THE BOARD OF REGISTRY
 DATE: August 23, 1972

PAPER STREET LAYOUT ACCORDING TO A PLAN
 RECORDED IN NORFOLK COUNTY DEEDS
 BOOK 53 PLAN No. 2044

RELOCATION OF ROUTE 128
 LAYOUT No. 44-21 PUBLIC VARIABLE WIDTH