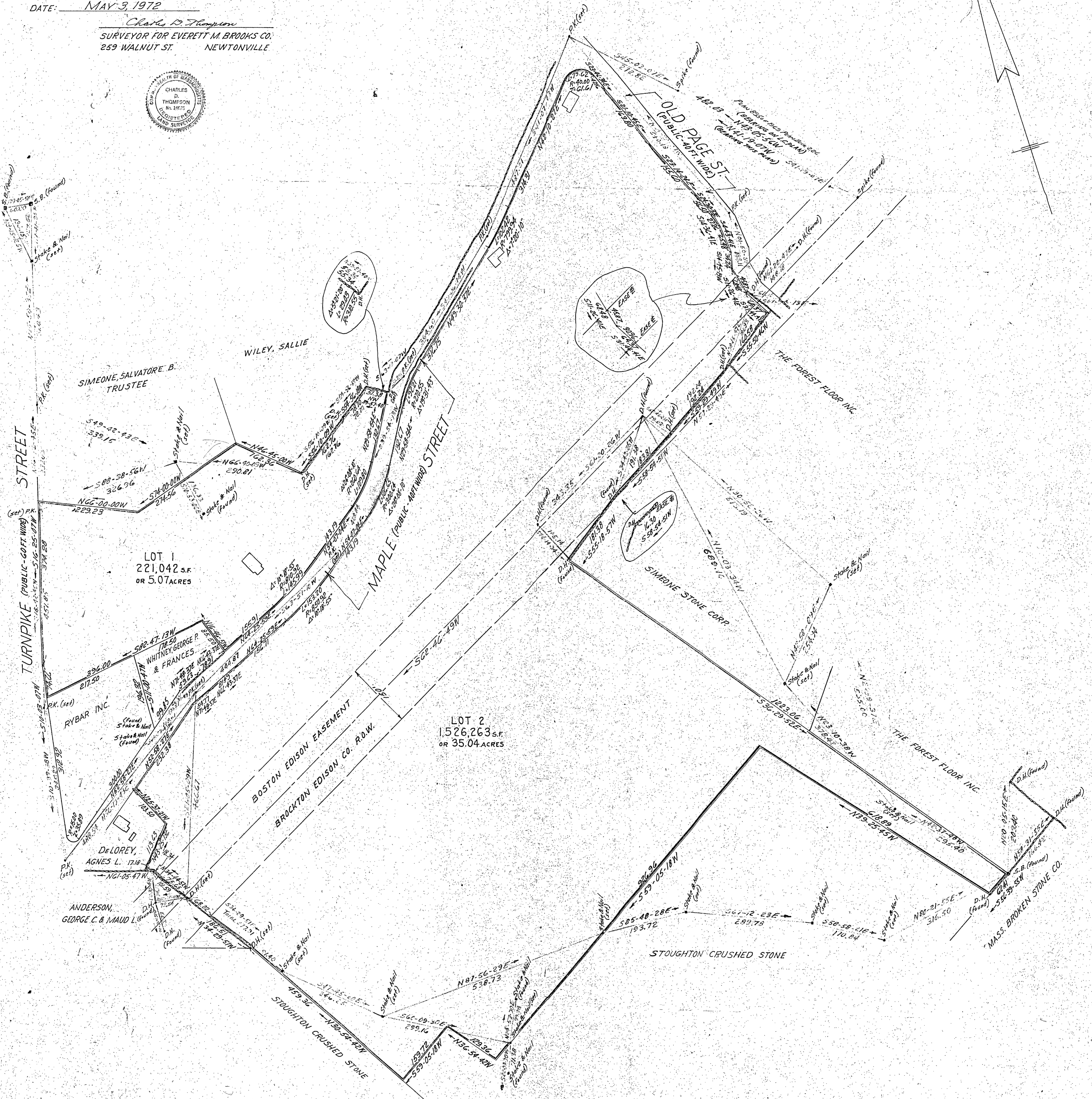
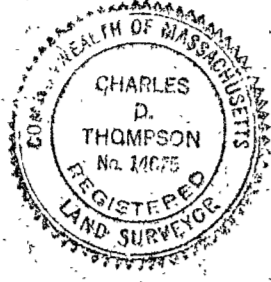


I CERTIFY THAT THIS ACTUAL SURVEY WAS MADE ON THE GROUND IN ACCORDANCE WITH THE LAND COURT INSTRUCTIONS OF 1971 BETWEEN FEBRUARY 16, 1971 AND APRIL 19, 1972.

DATE: MAY 3, 1972

Charles D. Thompson
 SURVEYOR FOR EVERETT M. BROOKS CO.
 259 WALNUT ST. NEWTONVILLE



STOUGHTON PLANNING BOARD
 APPROVAL UNDER THE SUBDIVISION CONTROL
 LAW, NOT REQUIRED.

DATE: May 12, 1972

William R. Thompson

PLAN OF LAND
 IN
 STOUGHTON, MASS.

SCALE: 1 IN = 100 FT.
 EVERETT M. BROOKS CO.
 NEWTONVILLE & WAYLAND

MAY 3, 1972
 CIVIL ENGINEERS
 MASS.