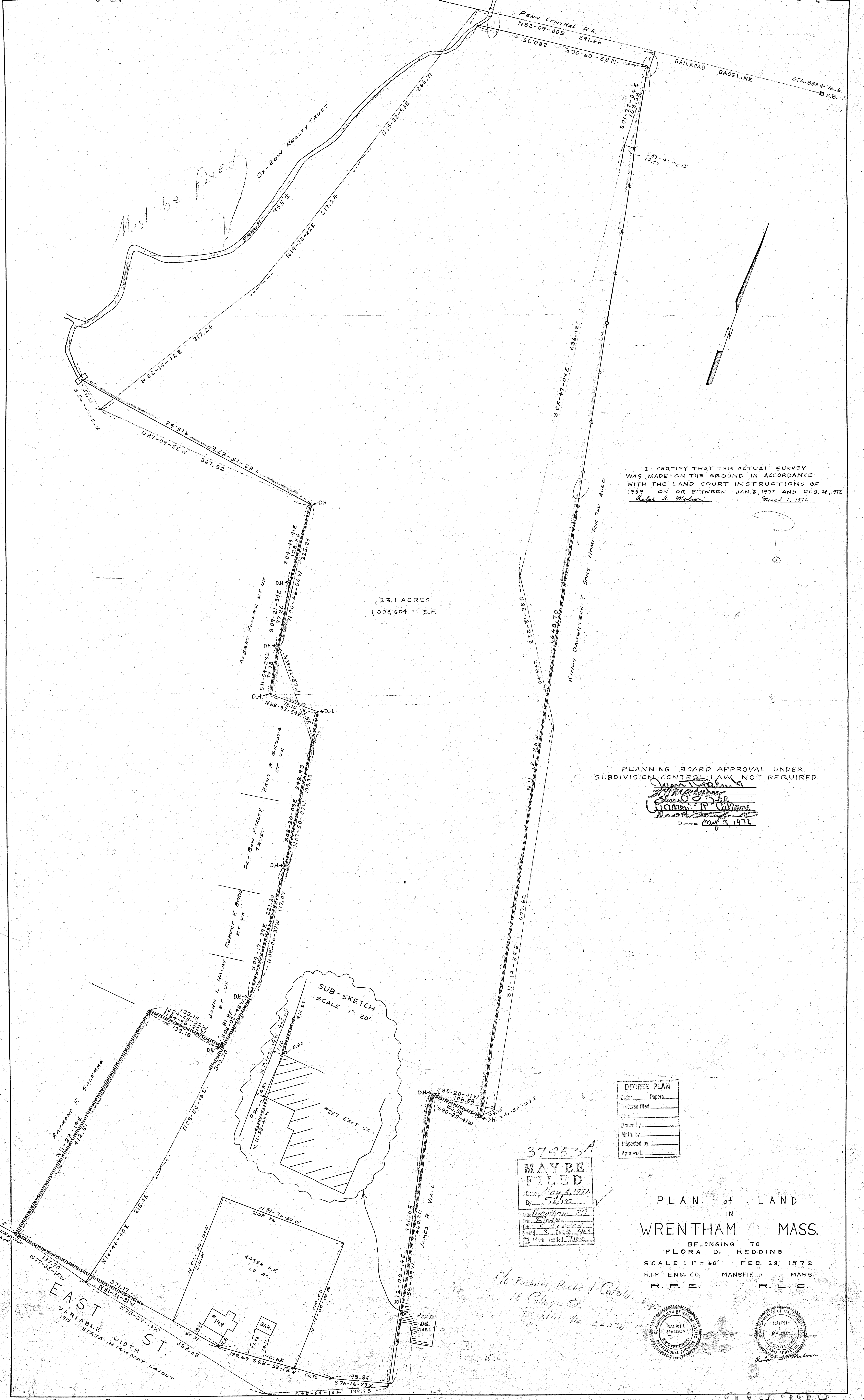


37453A

37453A

EAST ST WREN



Must be fixed

23.1 ACRES
1,006,604 S.F.

I CERTIFY THAT THIS ACTUAL SURVEY
 WAS MADE ON THE GROUND IN ACCORDANCE
 WITH THE LAND COURT INSTRUCTIONS OF
 1959 ON OR BETWEEN JAN. 8, 1972 AND FEB. 28, 1972
Ralph L. Malcom March 1, 1972

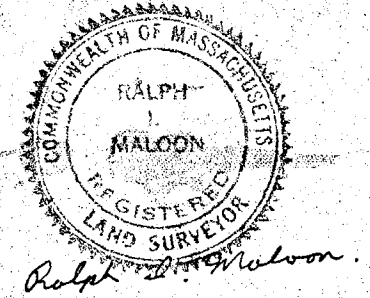
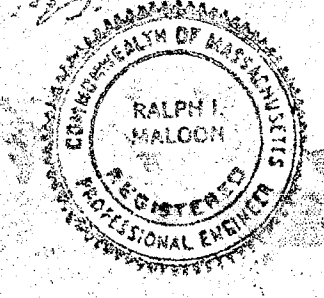
PLANNING BOARD APPROVAL UNDER
 SUBDIVISION CONTROL LAW NOT REQUIRED

[Signature]
[Signature]
 DATE May 3, 1972

DEED PLAN	
Color	Papers
Traverse	Filed
Atlas	
Drawn by	
Math. by	
Inspected by	
Approved by	

37453A
MAY BE FILED
 Date May 4, 1972
 By Silva
 Atty. Leitchman 29
 Title Filed
 Date Filed
 State Chs. St. Hqs.
 Public Record Trust

PLAN of LAND
 IN
WRENTHAM MASS.
 BELONGING TO
 FLORA D. REDDING
 SCALE: 1" = 60' FEB. 28, 1972
 R.L.M. ENG. CO. MANSFIELD MASS.
 R. P. E. R. L. S.



Ch. Pachner, Roche & Catalano, Inc.
 16 College St.
 Franklin, Mass. 02038

37453A

37453A