

Exist. S.B. (found)
Land Ct. (1915 A.D.)

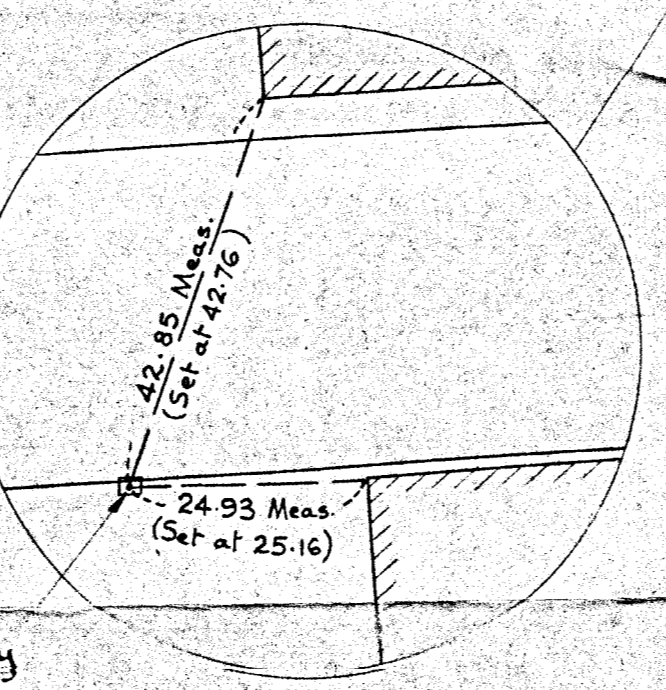
L.C. No. 3527

WALNUT STREET (PUBLIC 40' R/W)

Exist. S.B. (found)
Land Ct. (1915 A.D.)

Theodore C. Gardiner
Frederick T. Gardiner
Kenneth D. Gardiner

Concrete Bound, set in 1961 by
Southwick & Assoc., found to be
dislodged as shown.



I certify that this actual survey
was made on the ground in
accordance with the Land Court
Instructions of 1959, between
December 11 and December 30, 1970

H. Frederick Hageman,
George B. Rockwell,
& John N. Dwyer, Treas.
S.S.B. Realty Trust

R.C. Southwick
R.C. Southwick, L.S. No. 18934

City of Quincy, Mass.
Planning Board Approval not required
under Subdivision Control Law.
Date: May 6, 1971 *Hugh A. Walker*

NOTE: Bearings shown thus N20°21'30"E
indicate bearings from E.W. Branch Inc.
Plan of Land in Quincy, Mass. dated Jan. 12, 1968.
Bearing system used on this plan corresponds
to that shown on Land Court No. 6207A (1915 A.D.)

PLAN OF LAND IN QUINCY, MASS.

Scale 1" = 40'

Dicks & Southwick Associates, Engineers & Surveyors

January 6, 1971.

I certify that the conditions on the ground are the same today
as when they were surveyed, with exception of bounds & bolts
set as noted hereon. *R.C. Southwick* Nov. 15, 1971.

DICKS & SOUTHWICK
ASSOCIATES
Consulting Engineers
176 PRESIDENTS LANE
QUINCY, MASS.

