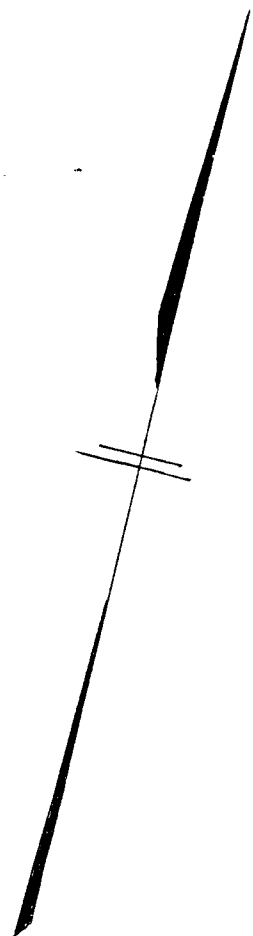
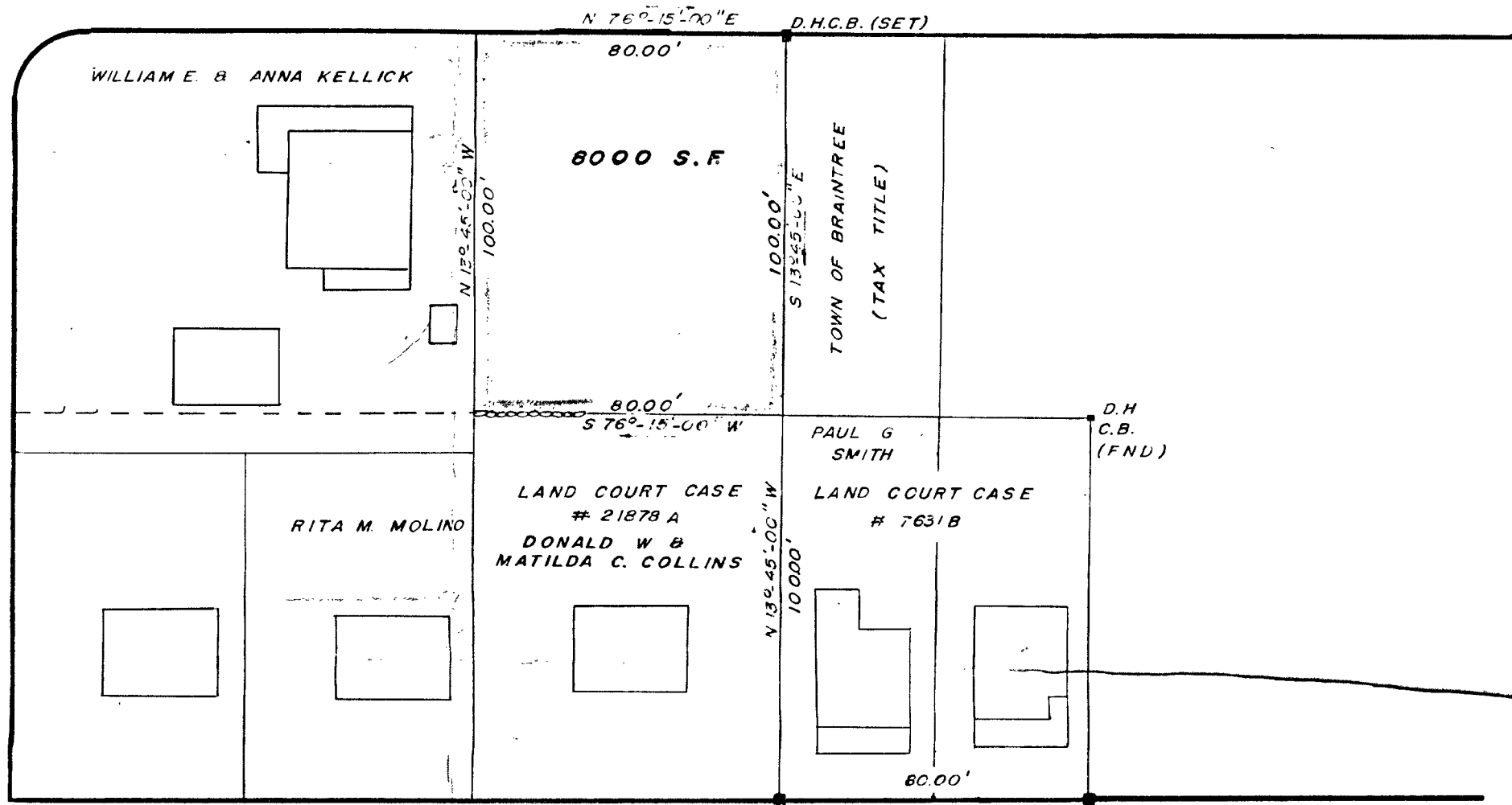


FIELD SURVEY TRAVERSE TABLE							
STA.	INTERIOR	BEARING	DIST.	N(+)	S(-)	E(+)	W(-)
1	90°-00'-00"	N 76°-15'-00" E	80.000'	19.015'		77.707'	
2	90°-00'-00"	S 13°-45'-00" E	100.000'		97.134'	23.769'	
3	90°-00'-00"	S 76°-15'-00" E	80.000'		19.015'		77.707'
4	90°-00'-00"	N 13°-45'-00" W	100.000'	97.134'			23.769'



FERNCROFT (PUBLIC - 40' WIDE) ROAD

GLENROSE (PUBLIC - 40' WIDE) AVENUE



PLEASANT VIEW (PUBLIC - 40' WIDE) AVENUE

JULY 21, 1971 AUG. 5, 1971
Lamont R. Healy AUG. 5, 1971

Lamont R. Healy AUG. 5, 1971

PLAN OF LAND IN
 BRAINTREE, MASS.
 FOR
HENRY E. OLSON
 SCALE 1" = 40' AUGUST 5, 1971

- NOTES:
1. SHOWN AS LOTS 89 & 90, SHEET 3041, BRAINTREE ASSESSORS' SHEET.
 2. DEED TO PROPERTY RECORDED AT NORFOLK REGISTRY OF DEEDS BOOK 2692, PAGE 57.

Lamont R. Healy R.L.S.

LAMONT R. HEALY, INC. — LAND SURVEYORS