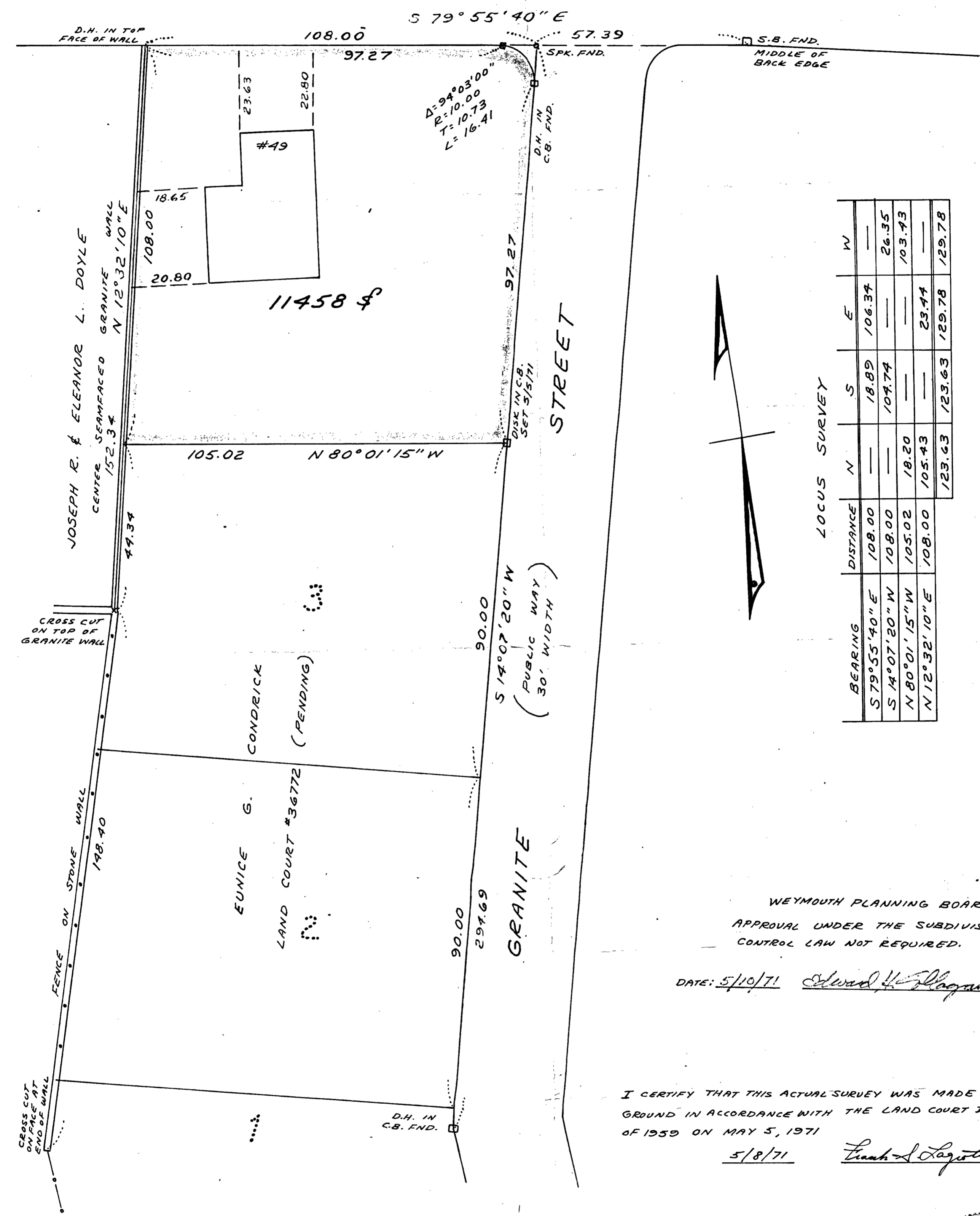


SUMMIT STREET (PUBLIC WAY 50' WIDTH)



LOCUS SURVEY

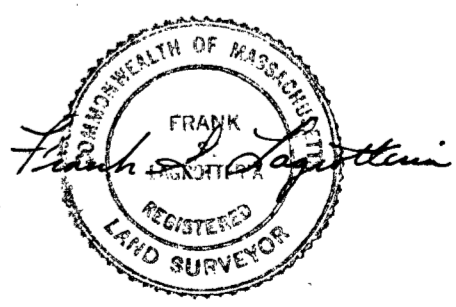
BEARING	DISTANCE	N	S	E	W
S 79° 55' 40" E	108.00	—	18.89	106.34	—
S 14° 07' 20" W	108.00	—	107.74	—	26.35
N 80° 01' 15" W	105.02	18.20	—	—	103.43
N 12° 32' 10" E	108.00	105.43	—	23.44	—
		129.63	123.63	129.78	129.78

WEYMOUTH PLANNING BOARD
 APPROVAL UNDER THE SUBDIVISION
 CONTROL LAW NOT REQUIRED.

DATE: 5/10/71 *Edward H. Blagman* CHAIRMAN

I CERTIFY THAT THIS ACTUAL SURVEY WAS MADE ON THE
 GROUND IN ACCORDANCE WITH THE LAND COURT INSTRUCTIONS
 OF 1959 ON MAY 5, 1971

5/8/71 *Frank S. Lagrotteria*



PLAN OF LAND IN
WEYMOUTH-NORFOLK COUNTY-MASS.
 SCALE 1"=20' MAY 8, 1971
 FRANK S. LAGROTTERIA ~ SURVEYOR
 99 WINDSOR RD., So. WEYMOUTH, MASS.