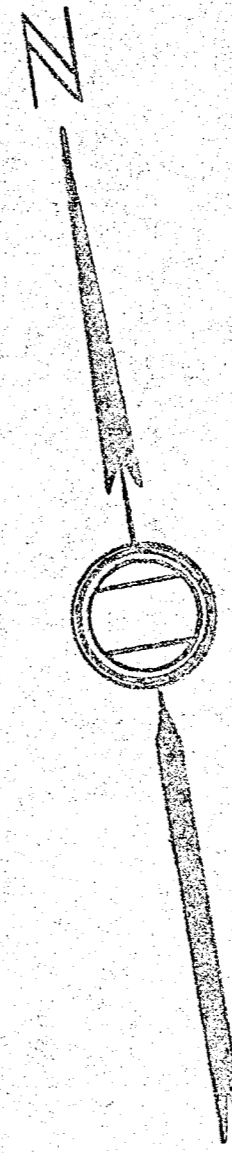


37057A



DECREE PLAN

Order _____ Papers _____

Traverse Method _____

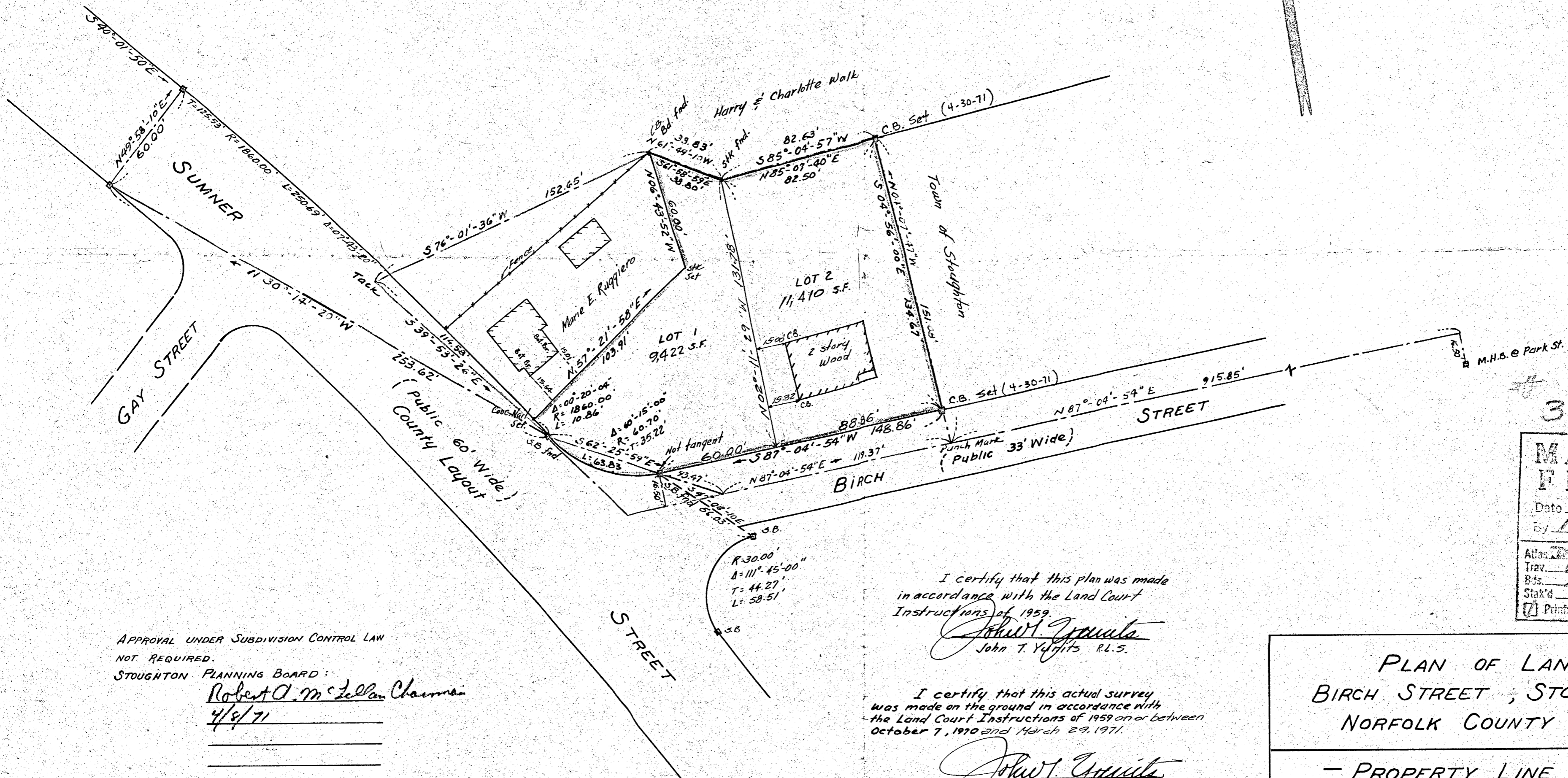
Atlas _____

Drawn by _____

Math. by _____

Inspected by _____

Approved _____



37057A

MAY BE FILED

Date 5-14-71

By REW

Atlas Draw 33

Trav. Sis

Bk's Ch. Sh.

Stak'd Ch. Sh.

Prints Rec'd 10

APPROVAL UNDER SUBDIVISION CONTROL LAW NOT REQUIRED.

STOUGHTON PLANNING BOARD:

Robert A. McTellan Chairman

4/4/71

I certify that this plan was made in accordance with the Land Court Instructions of 1959.

John T. Yunits

John T. Yunits R.E. & R.L.S.

I certify that this actual survey was made on the ground in accordance with the Land Court Instructions of 1959 on or between October 7, 1970 and March 29, 1971.

John T. Yunits

John T. Yunits R.E. & R.L.S.

Date: March 29, 1971

OWNER

Josephine M. Callahan

12 Birch Street

Stoughton, Mass.

PLAN OF LAND

BIRCH STREET, STOUGHTON

NORFOLK COUNTY, MASS.

— PROPERTY LINE PLAN —

	SCALE	1"=40'	DATE	3/29/71	JOB NO.	3169
	DRAWN	G.K.H.	CHECK'D	DJM	APP'D	
	YUNITS ENGINEERING COMPANY, INC.					
CONSULTING ENGINEERS						
HOLBROOK, MASS. 02343						<u>I</u>

ON EXC P.B.

R.C.C. 2/8/71

37057A