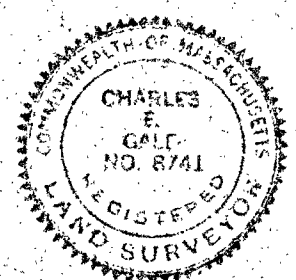
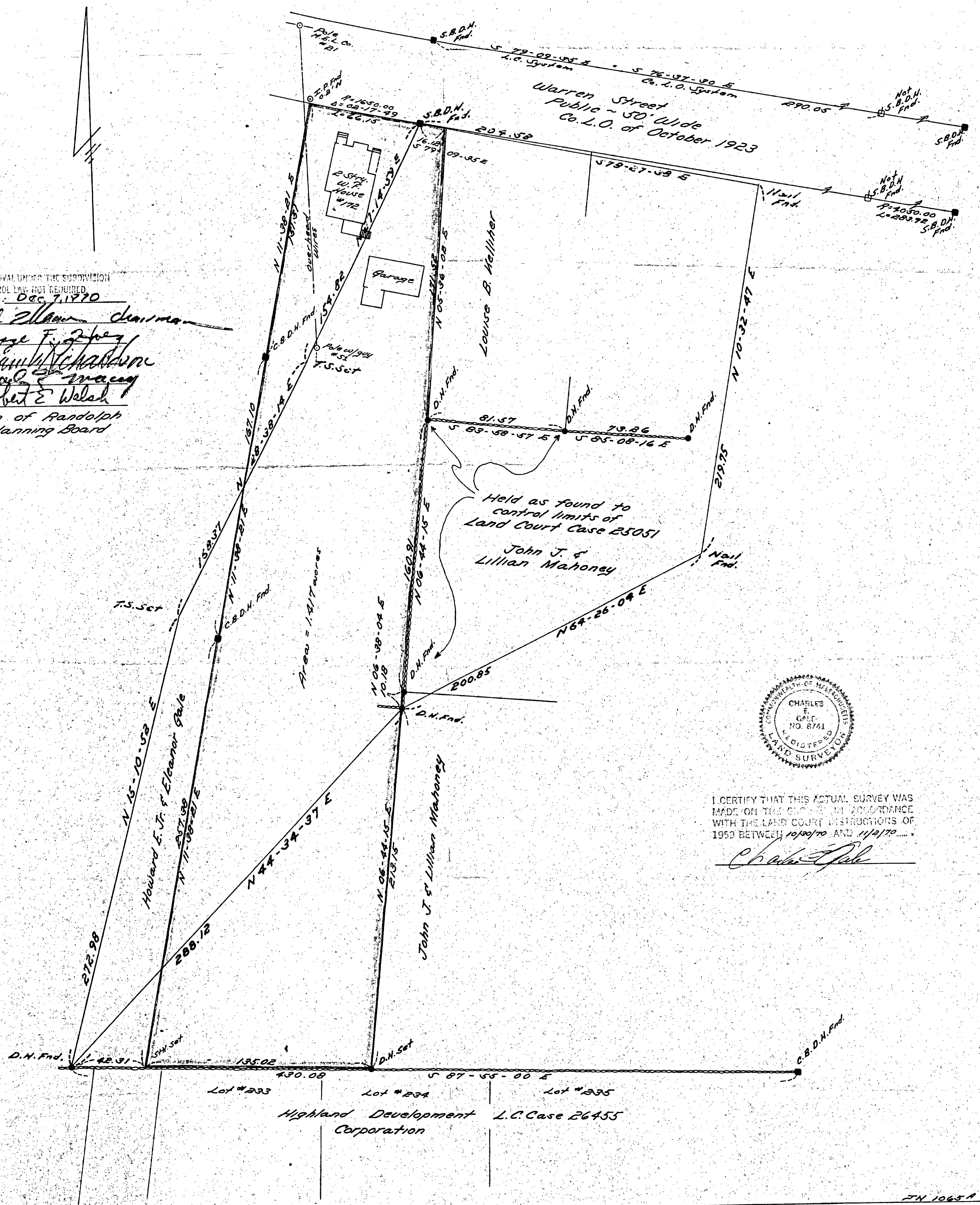


PLAN OF LAND IN
 RANDOLPH, NORFOLK CO., MASS.
 Scale: 1" = 40' December 3, 1970

GALE ENGINEERING CO., INC.
 8 WASHINGTON PLACE, FRAMINGHAM, MASS.
 REGISTERED ENGINEERS AND LAND SURVEYORS

JN 10654
 S.M. Long

APPROVAL UNDER THE SUPERVISION
 CONTROL LAW 201 REQUIRED
 Date: Dec 7, 1970
 Jack Zilman Chairman
 George F. Ziegler
 William Richardson
 Charles E. Macey
 Robert E. Welch
 Town of Randolph
 Planning Board



I CERTIFY THAT THIS ACTUAL SURVEY WAS MADE ON THE GROUND IN ACCORDANCE WITH THE LAND COURT INSTRUCTIONS OF 1959 BETWEEN 10/30/70 AND 11/2/70.
 Charles E. Gale

JN 10654
 S.M. Long