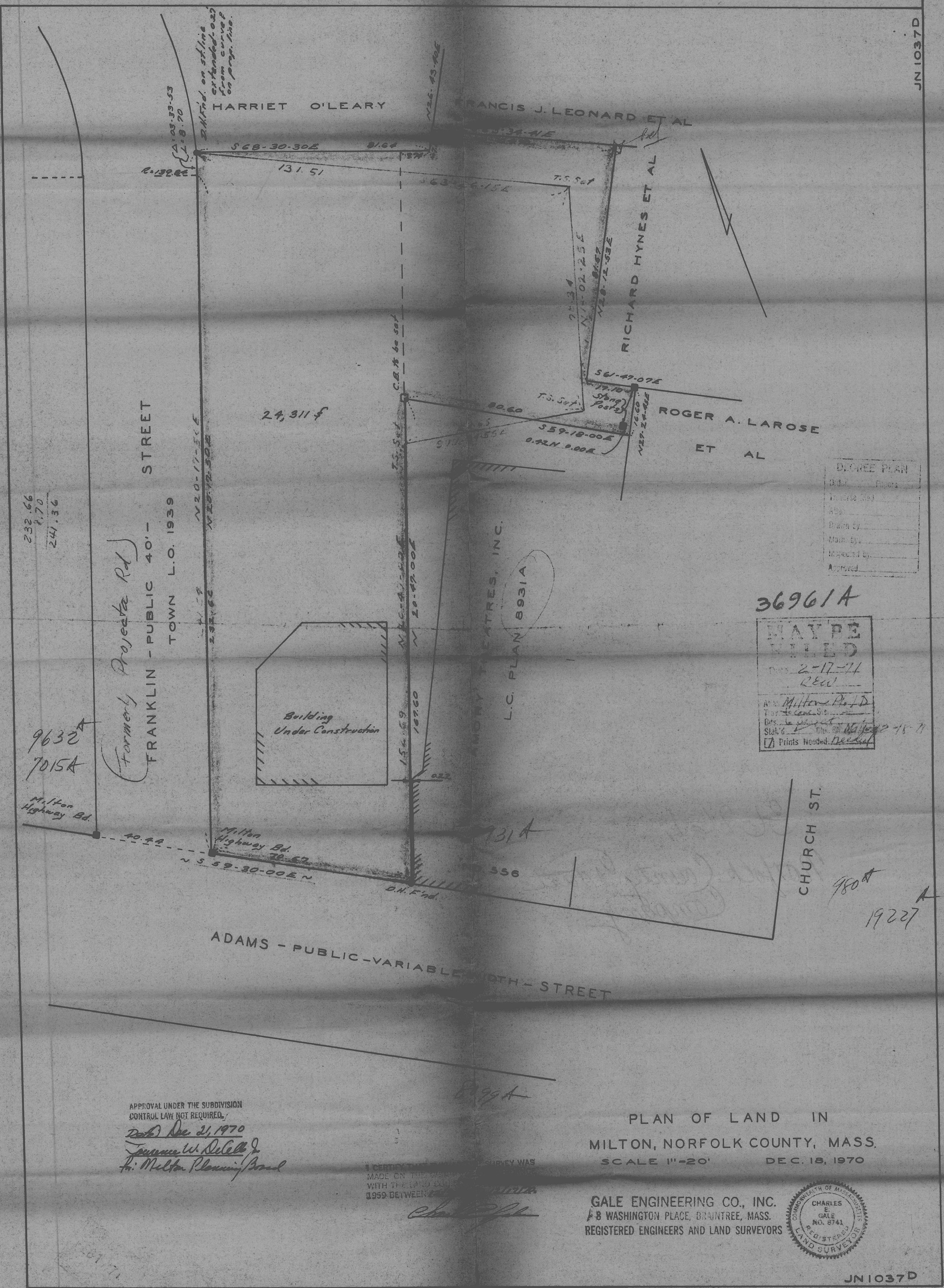


36961A

JN 1037D



DEGREE PLAN	
Original	Papers
Inverse	562
Area	
Drawn by	
Made by	
Inspected by	
Approved	

36961A

**MAY BE FILED**  
 FEB 2-17-71  
 REW

Attest: Milton, Mass.  
 Town Clerk  
 Date: 2-17-71  
 Prints Needed: *Needful*

APPROVAL UNDER THE SUBDIVISION CONTROL LAW NOT REQUIRED.  
 Date: Dec 21, 1970  
 Thomas W. DeCelle Jr.  
 Sr. Milton Planning Board

I CERTIFY THAT THIS SURVEY WAS MADE ON THE GROUND WITH THE LATEST EQUIPMENT BETWEEN 1959 AND 1970.  
 Charles E. Gale

PLAN OF LAND IN  
 MILTON, NORFOLK COUNTY, MASS.  
 SCALE 1"=20' DEC. 18, 1970

GALE ENGINEERING CO., INC.  
 18 WASHINGTON PLACE, BRAINTREE, MASS.  
 REGISTERED ENGINEERS AND LAND SURVEYORS



JN 1037D

36961A