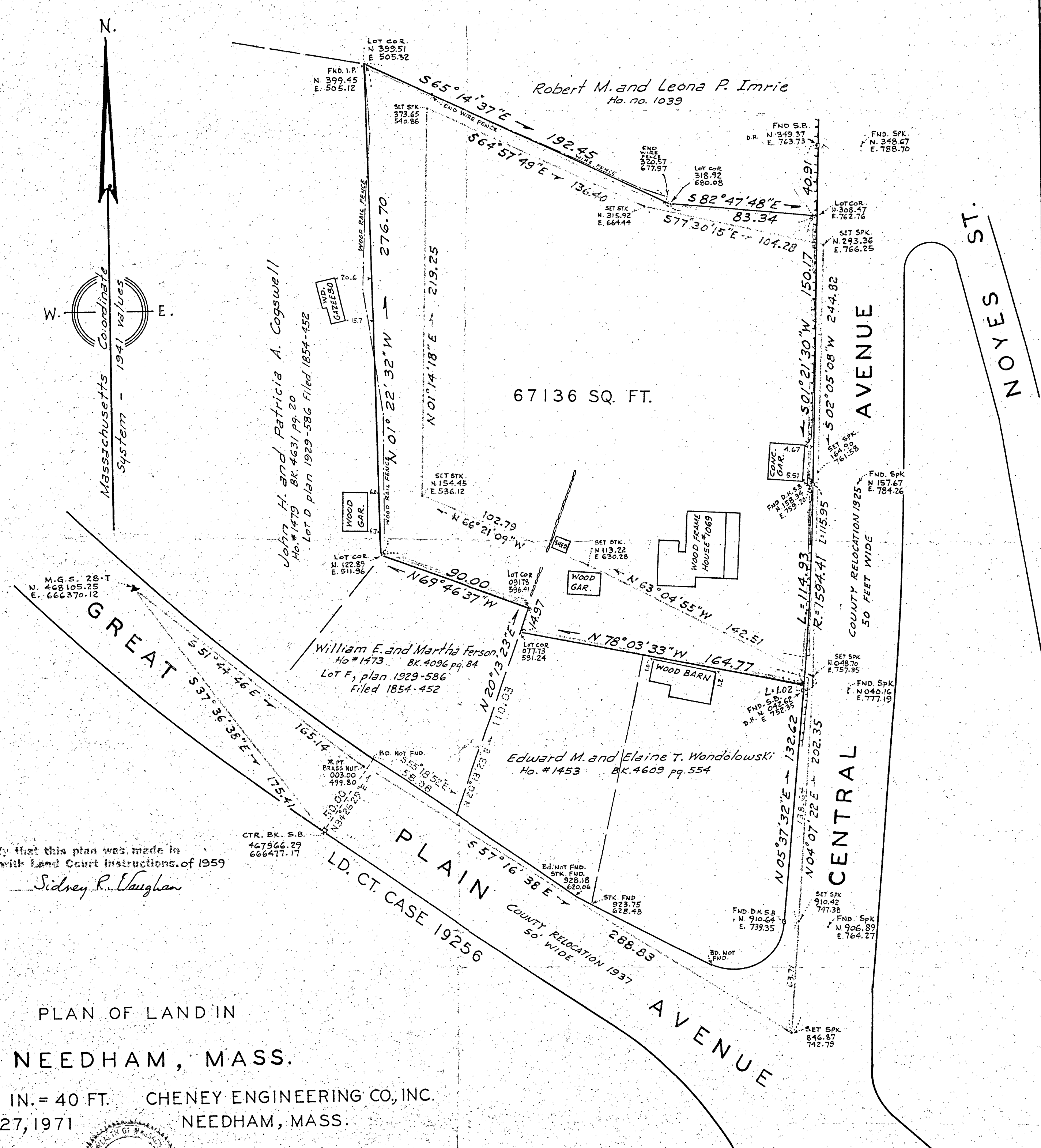
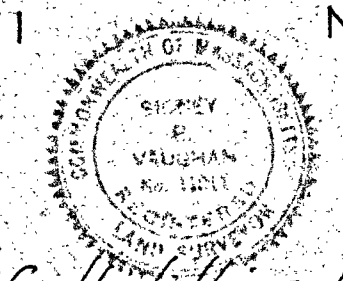


TRANSIT-LINE TRAVERSE							PROPERTY-LINE TRAVERSE						
BEARING	DIST.	N.	S.	E.	W.	CO-ORDINATES N. E.	BEARING	DIST.	N.	S.	E.	W.	CO-ORDINATES N. E.
N 63° 04' 55" W	142.51	64.517			127.070	113.22 630.28	N 78° 03' 33" W	164.77	34.091			161.205	077.73 591.24
N 66° 21' 09" W	102.79	41.230			94.159	154.45 536.12	N 20° 13' 23" E	14.97	14.047		5.175		091.78 596.41
N 01° 14' 18" E	219.25	219.199		4.78		373.65 540.86	N 69° 46' 37" W	90.00	31.111			84.452	122.89 511.96
S 64° 57' 49" E	136.40		57.724	123.584		315.92 664.44	N 01° 22' 32" W	276.70	276.620			6.642	399.51 505.32
S 77° 30' 15" E	104.28		22.563	101.810		293.36 766.25	S 65° 14' 37" E	192.45		80.591	174.763		318.92 680.08
S 02° 05' 08" W	244.82		244.658		8.909	048.70 757.35	S 82° 47' 48" E	83.34		10.450	82.682		308.47 762.76
		324.946	324.945	230.132	230.138		S 01° 21' 30" W	150.17		150.128		3.560	158.34 759.20
							S 03° 22' 22" W	114.90		114.701		6.760	043.64 752.44
									355.869	355.870	262.620	262.619	



I certify that this plan was made in accordance with Land Court instructions of 1959
 Sidney R. Vaughan

PLAN OF LAND IN
 NEEDHAM, MASS.
 SCALE: 1 IN. = 40 FT. CHENEY ENGINEERING CO, INC.
 JAN. 27, 1971 NEEDHAM, MASS.



I certify that this actual survey was made on the ground in accordance with the Land Court instructions of 1959 on or between Dec. 28, 1970 and Jan. 22, 1971
 Sidney R. Vaughan
 Jan 27, 1971

I hereby certify that the property lines shown on this plan are the lines dividing existing ownerships, and the lines of the streets and ways shown are those of public or private streets or ways already established, and that no new lines for division of existing ownership or for new ways are shown.
 Chapter 380, Acts of 1966
 Sidney R. Vaughan
 Registered Land Surveyor
 Date: Jan 27, 1971

36956