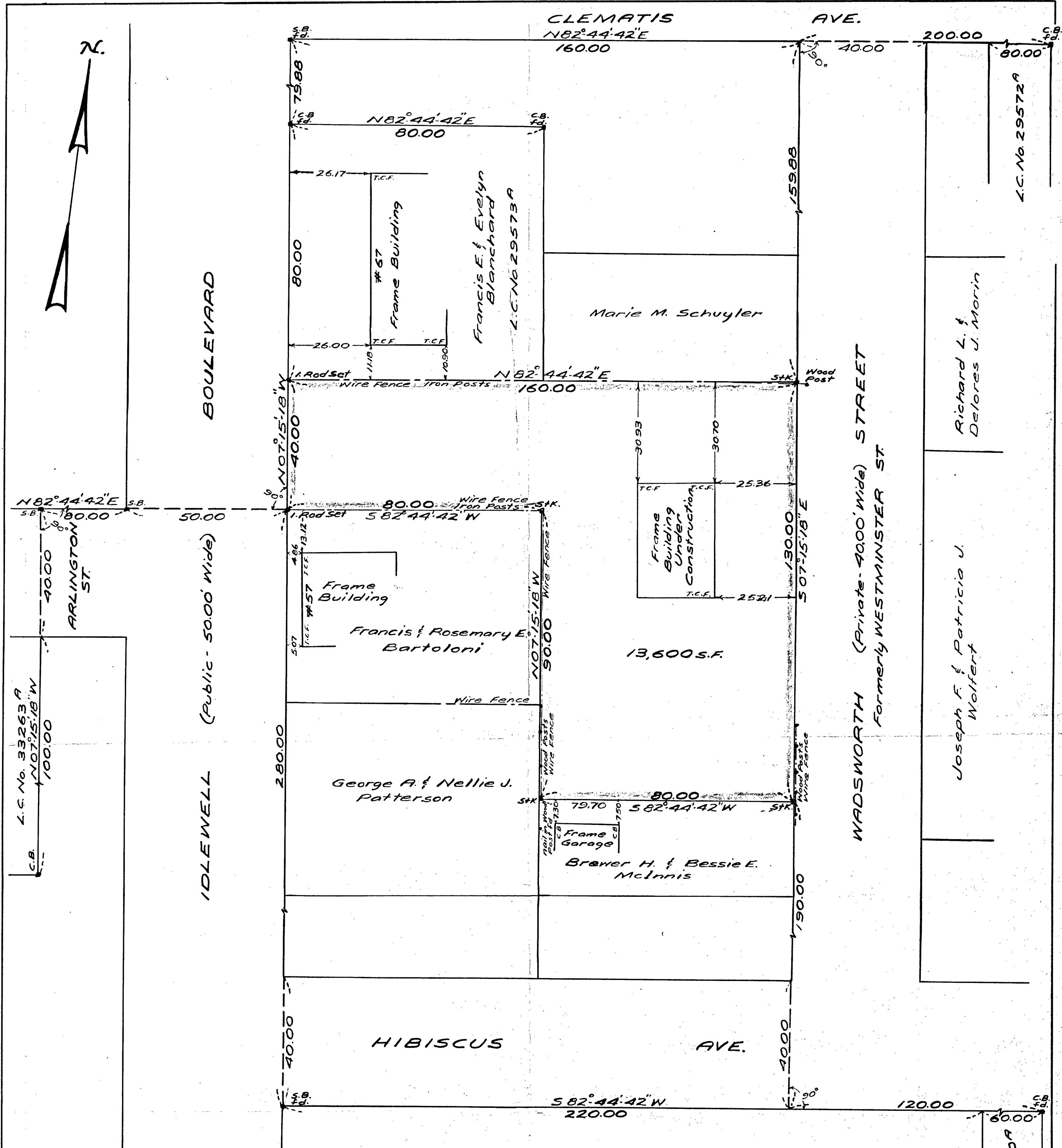


36952



BOULEVARD

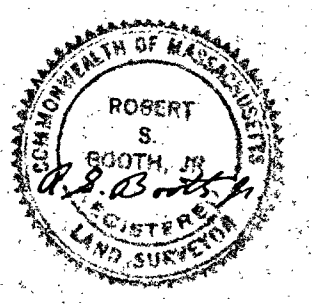
IDLEWELL (Public - 5000' Wide)

WADSWORTH (Private - 4000' Wide) STREET
Formerly WESTMINSTER ST.

Plan of Land in Weymouth, Mass.
 Scale 20 feet to an inch
 Jan. 20, 1971
 Ernest W. Branch Inc., Civil Engineers
 Adams Building, 1354 Hancock St., Quincy

Harry Christman
 1/21/71

I certify that this actual survey was made on the ground in accordance with the Land Court Instructions of 1959 on Jan. 7, 1971.
 Jan. 20, 1971: Robert S. Booth, Jr., Engineer



L.C. No. 31310A

L.C. No. 29572A