

PLAN OF LAND IN BRAINTREE

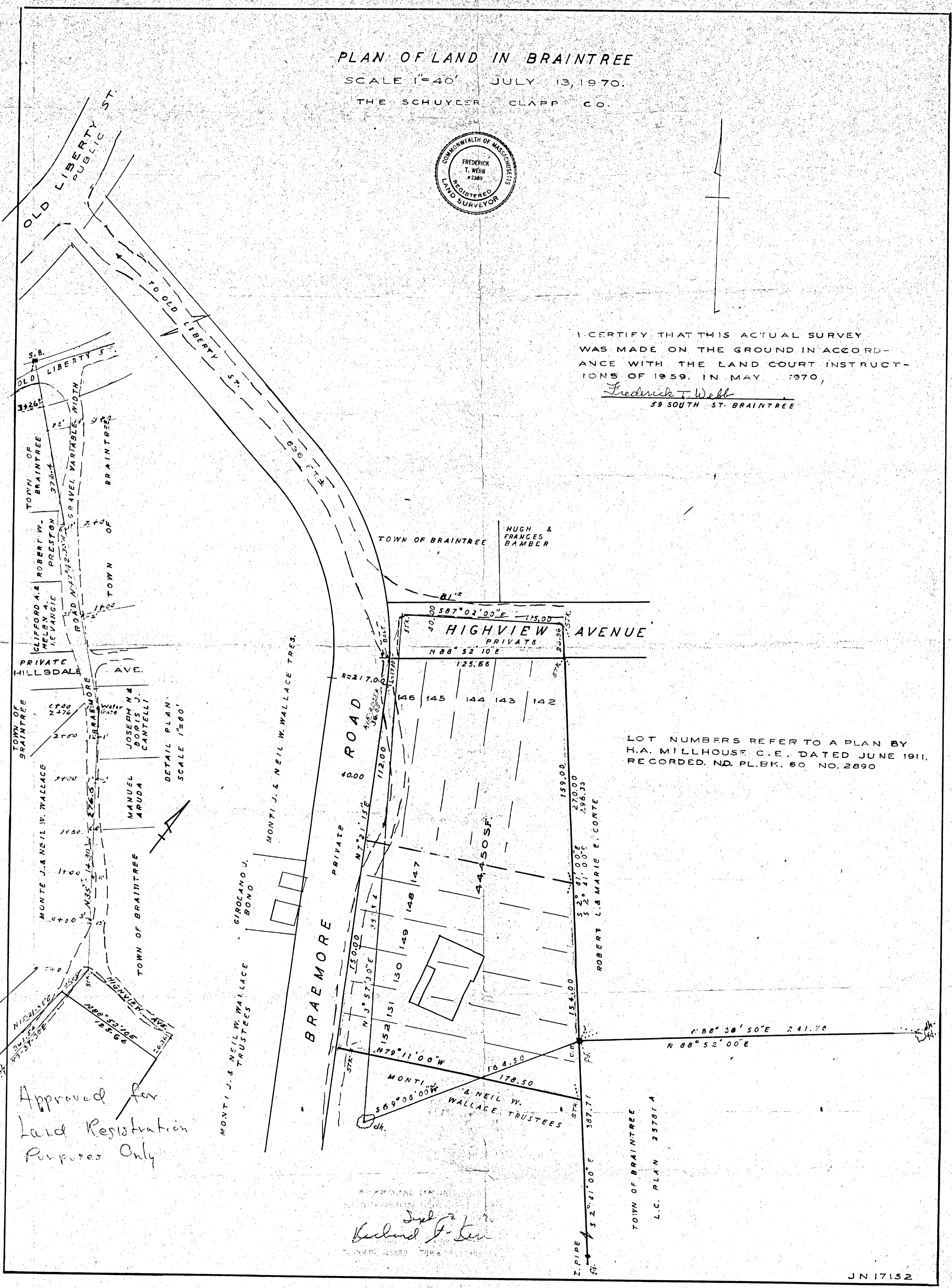
SCALE 1"=40' JULY 13, 1970.

THE SCHUYLER CLAPP CO.



I CERTIFY THAT THIS ACTUAL SURVEY WAS MADE ON THE GROUND IN ACCORDANCE WITH THE LAND COURT INSTRUCTIONS OF 1959. IN MAY, 1970,

*Frederick T. Webb*  
59 SOUTH ST. BRAINTREE



LOT NUMBERS REFER TO A PLAN BY H.A. MILLHOUSE, C.E., DATED JUNE 1911, RECORDED, ND. PL. BK. 60 NO. 2890

Approved for Land Registration Purposes Only

*Richard F. Ten*

L.C. PLAN 25781A