

PLAN OF LAND  
 IN  
 PLAINVILLE, MASS.  
 OWNED BY  
**GEORGE G BERGH**  
 SCALE 1 INCH = 100 FEET AUGUST 1970  
 SURVEYED BY C.J. KELLY & R.H. JOHNSON  
 CIVIL ENGINEERS TAUNTON, MASS.

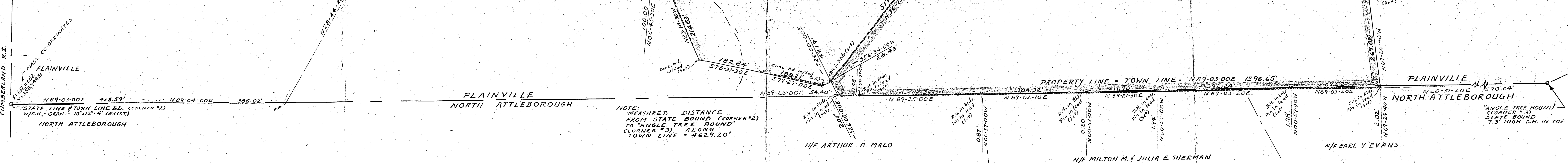
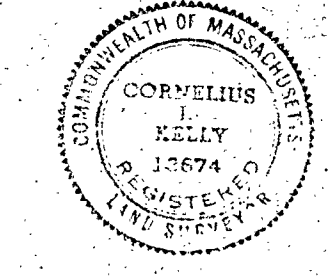
APPROVAL UNDER SUBDIVISION  
 CONTROL LAW NOT REQUIRED  
 PLAINVILLE PLANNING BOARD  
 DATE: \_\_\_\_\_  
 CHAIRMAN \_\_\_\_\_

NOTE:  
 Stone Walls and Barbed Wire Fences  
 (variable strands) along Easterly,  
 Southerly and Westerly Property  
 Lines, except along Hawkins St.  
 frontage, in various states of  
 repair.

AREA = 65.94 ACRES

I certify that this actual survey  
 was made on the ground in  
 accordance with the Land Court  
 Instructions of 1959 between  
 September 14, 1968 and July 17, 1970

Date \_\_\_\_\_  
 \_\_\_\_\_  
 20 BASSETT ST.  
 TAUNTON, MASS.



NOTE: MEASURED DISTANCE  
 FROM STATE BOUND (CORNER #2)  
 TO "ANGLE TREE BOUND"  
 CORNER #3 IS 41.015'  
 TOWN LINE = 4627.20'

"ANGLE TREE BOUND"  
 (CORNER #3)  
 SLATE BOUND  
 7.5" HIGH D.M. IN TOP