

SUBSKETCH NO. 1

SUBSKETCH NO. 2

TOTAL AREA
7Acres and 31,531 S.F.

PLAN OF LAND IN CANTON & STOUGHTON, MASS.

SCALE: 1" = 40' AUGUST 18, 1970

NORWOOD ENGINEERING CO., INC.
CIVIL ENGINEERS
NORWOOD, MASS.



I certify that this plan shows the property that are the lines of existing ownerships, and the lines of streets and ways shown are those of public or private streets or ways already established, and that no new lines for division of existing ownership or for new ways are shown.

DATE August 20, 1970

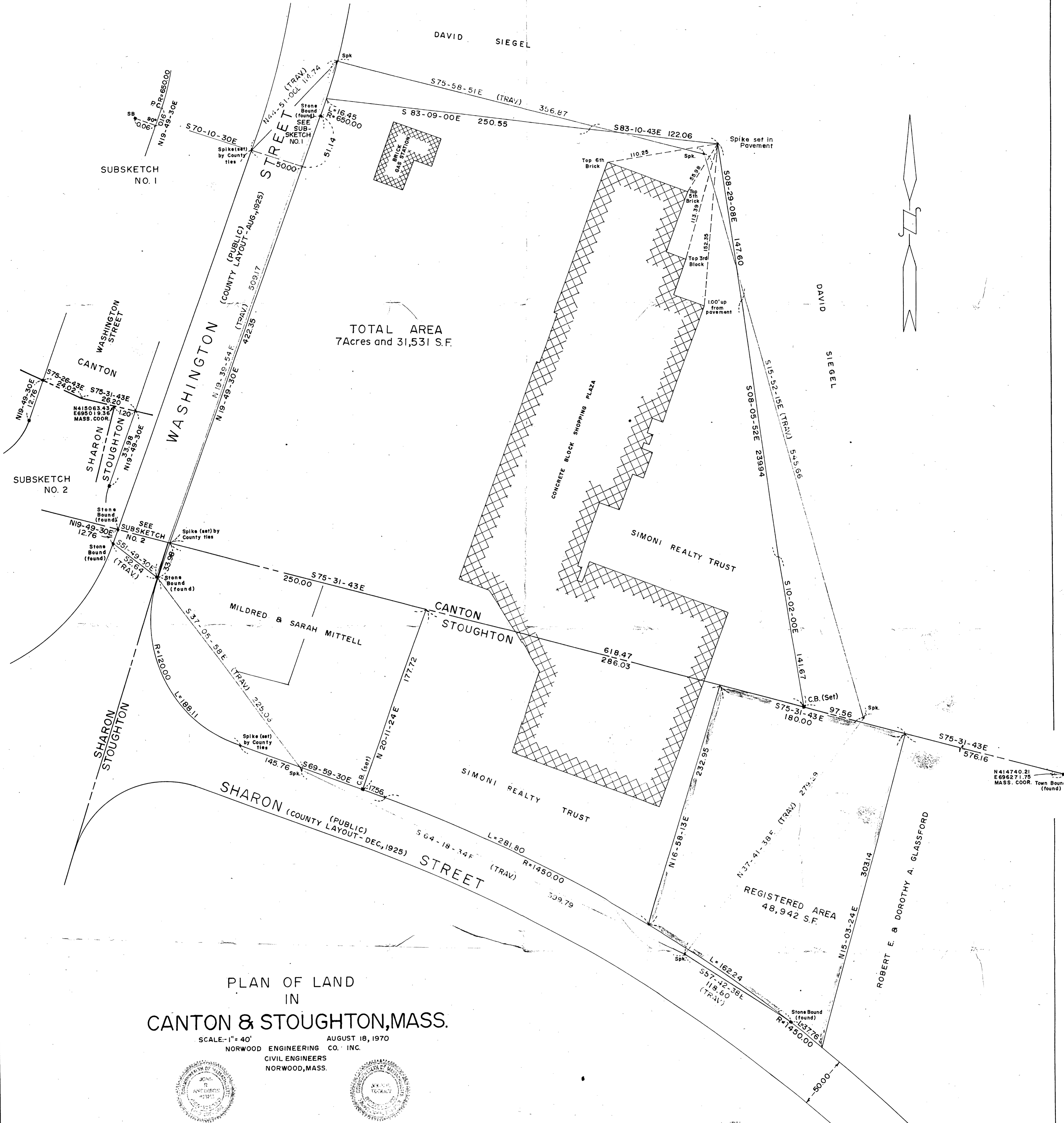
John R. Anderson
Registered Land Surveyor

I certify that this actual survey was made on the ground in accordance with the Land Court Instructions of 1959, on or between June 27, 1970 and August 20, 1970.

DATE: August 20, 1970

John R. Anderson
Registered Land Surveyor

NOTE: Distances that do not correspond to the County Layouts were changed at the request of the Norfolk County Engineering Department.



N414740.21
E696271.75
MASS. COOR. Town Bound (found)