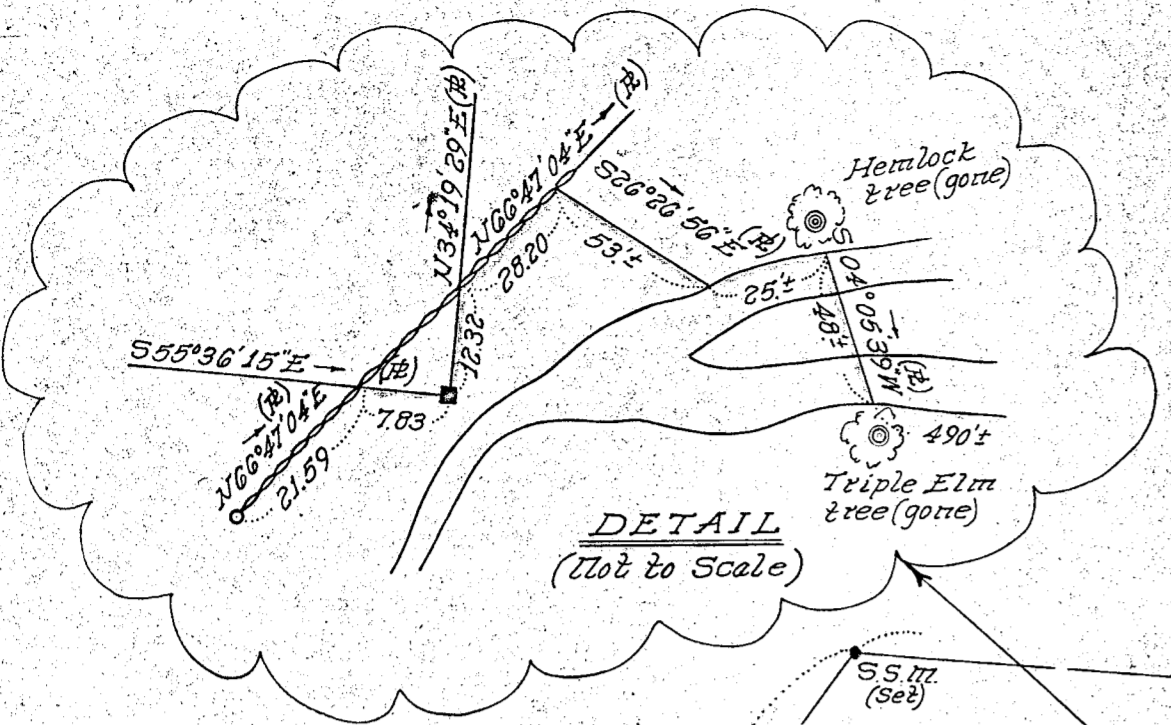
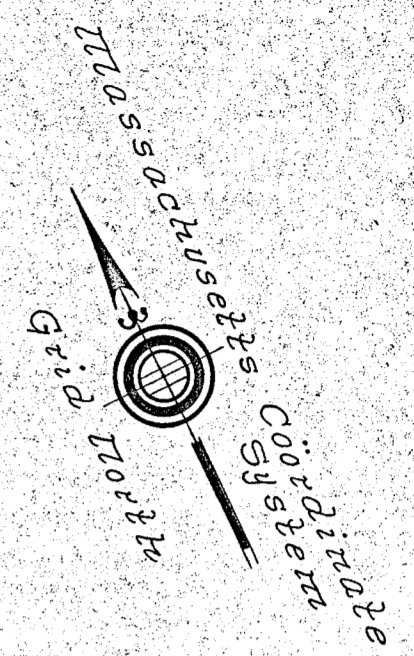
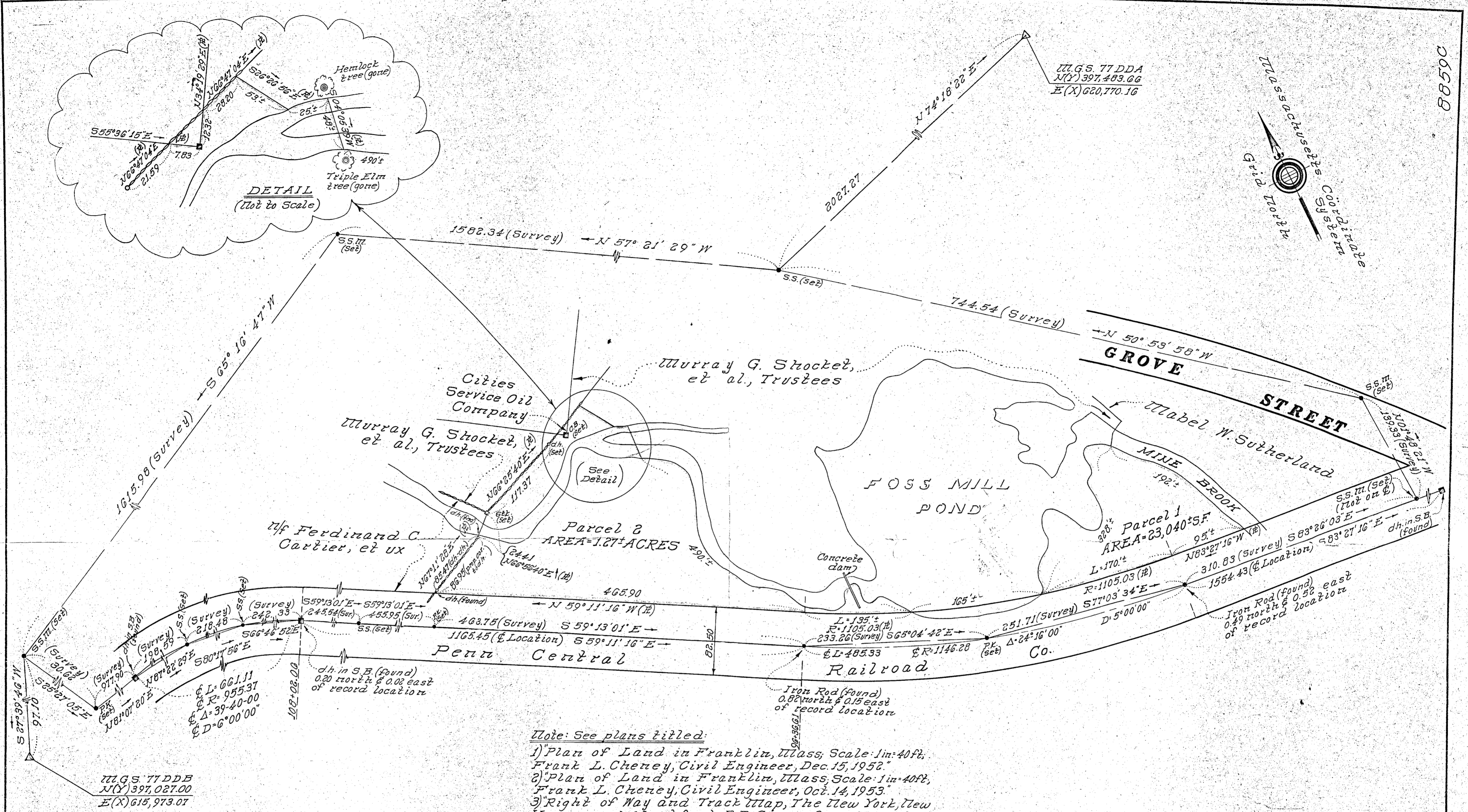


8859C



Note: See plans titled:
 1) "Plan of Land in Franklin, Mass, Scale: 1 in = 40 ft, Frank L. Cheney, Civil Engineer, Dec. 15, 1952."
 2) "Plan of Land in Franklin, Mass, Scale: 1 in = 40 ft, Frank L. Cheney, Civil Engineer, Oct. 14, 1953."
 3) "Right of Way and Track Map, The New York, New Haven and Hartford R.R. Co., from Franklin to Ashland" dated June 30, 1915. Sheet $\frac{14}{2}$

Note:
 I certify that this plan shows the property lines that are the lines of existing ownerships and the lines of streets and ways shown are those of public or private streets or ways already established, and that no new lines for divisions of existing ownerships or for ways are shown.
 Robert W. Foster Reg. Land Surveyor
 Date: August 18, 1970

I certify that this actual survey was made on the ground in accordance with the Land Court Instructions of 1959 between Jan. 2, 1969 and Dec. 2, 1969.
 Robert W. Foster Reg. Land Surveyor
 Date: August 18, 1970.

Plan of Land in
FRANKLIN, MASS.
 Scale: 1" = 80' December 2, 1969
 Schofield Brothers, Inc., Registered
 Land Surveyors
 1071 Worcester Rd., Framingham, Mass.
 Offices in Framingham, Milford & Uxbridge.

Research by: N/A Drafted by: f.m.
 Field Chief: R.H.M. Checked by: R.W.F.
 Computed by: R.W.F. Approved by: R.W.F.
 RLS

8859C