

PLAN OF LAND IN BRAINTREE

SCALE 1"=30'

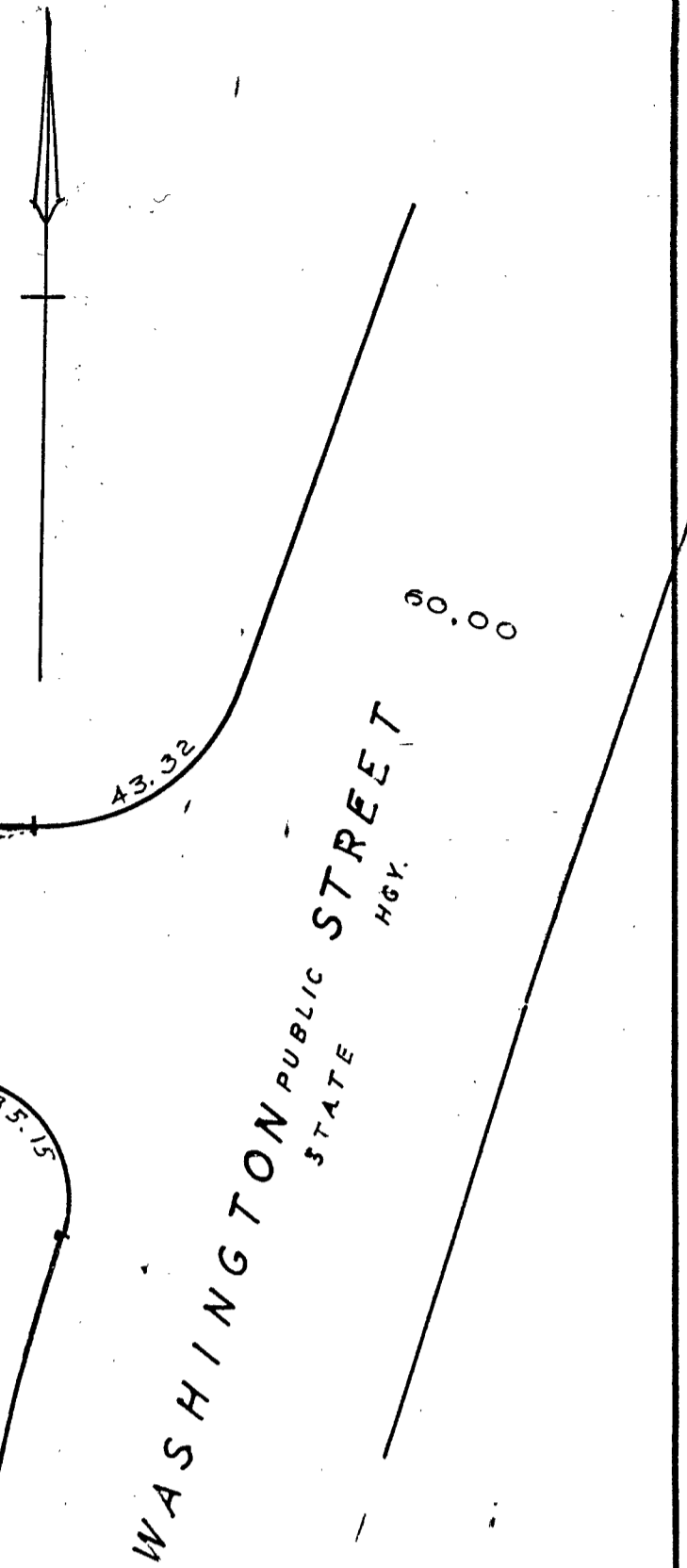
MAY 20, 1970

THE SCHUYLER CLAPP CO.  
BRAintree MASS.



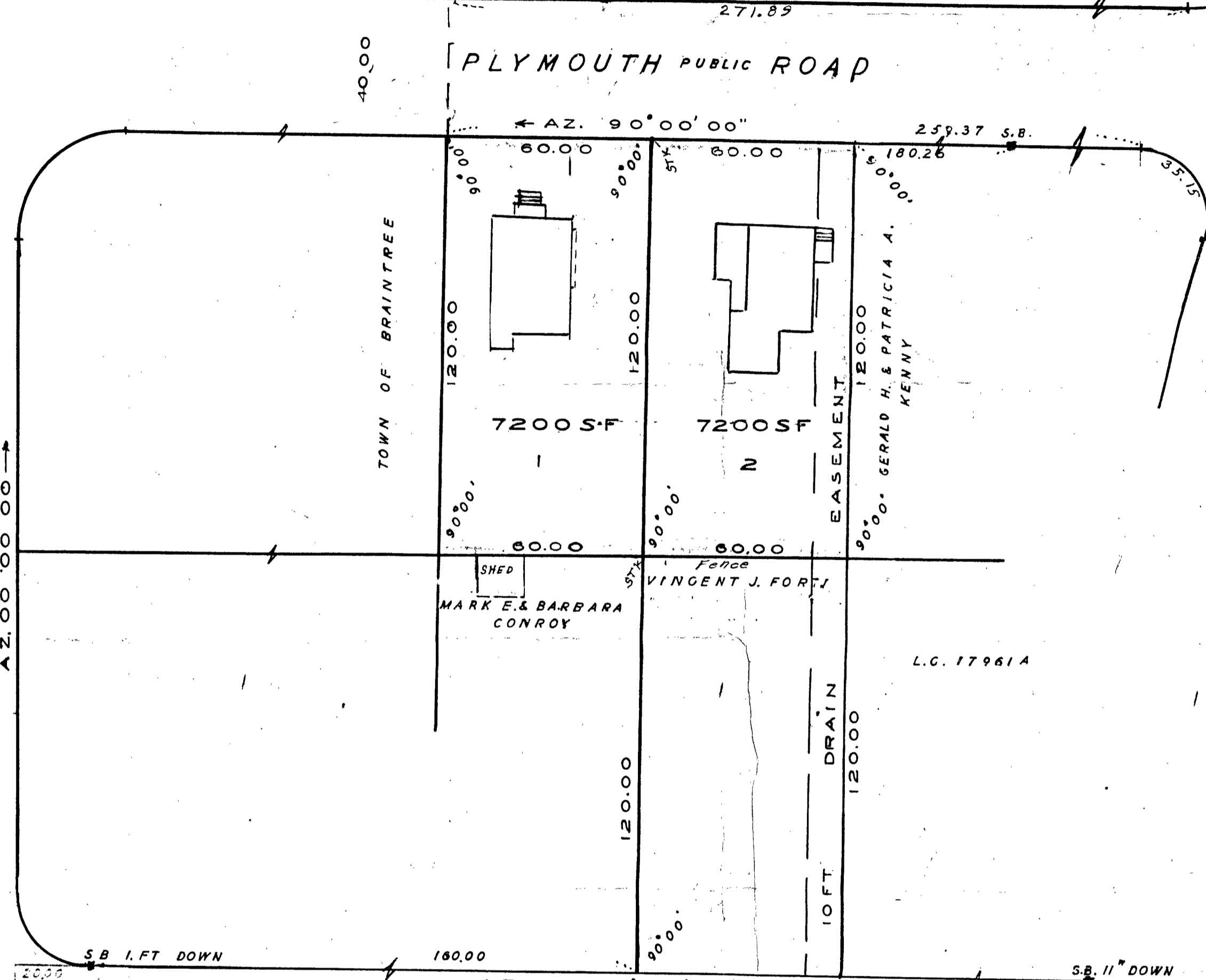
I CERTIFY THAT THIS ACTUAL SURVEY  
WAS MADE ON THE GROUND IN ACCORD-  
ANCE WITH THE LAND COURT INSTRUCT-  
IONS OF 1959. ON MAY 14 & 15, 1970

*Frederick T. Webb*



L.C. 17961A  
L.C. 21446A

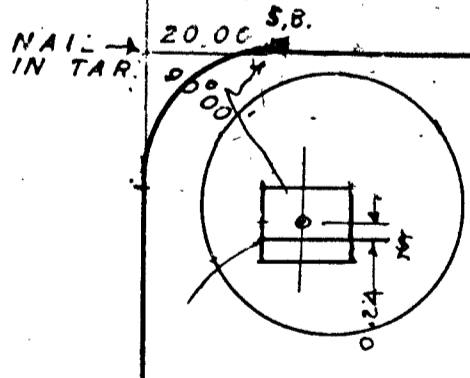
BEALS PUBLIC ROAD



PLYMOUTH PUBLIC ROAD

WASHINGTON PUBLIC STREET  
STATE HIGHWAY

WAMPATUCK PUBLIC ROAD



"I hereby certify that the property lines shown on this  
plan are the lines dividing existing ownerships, and the  
lines of streets and ways shown are those of public  
or private streets or ways already established, and that no  
new streets or ways are shown for division of existing ownership or for new  
ways shown."

*Frederick T. Webb*