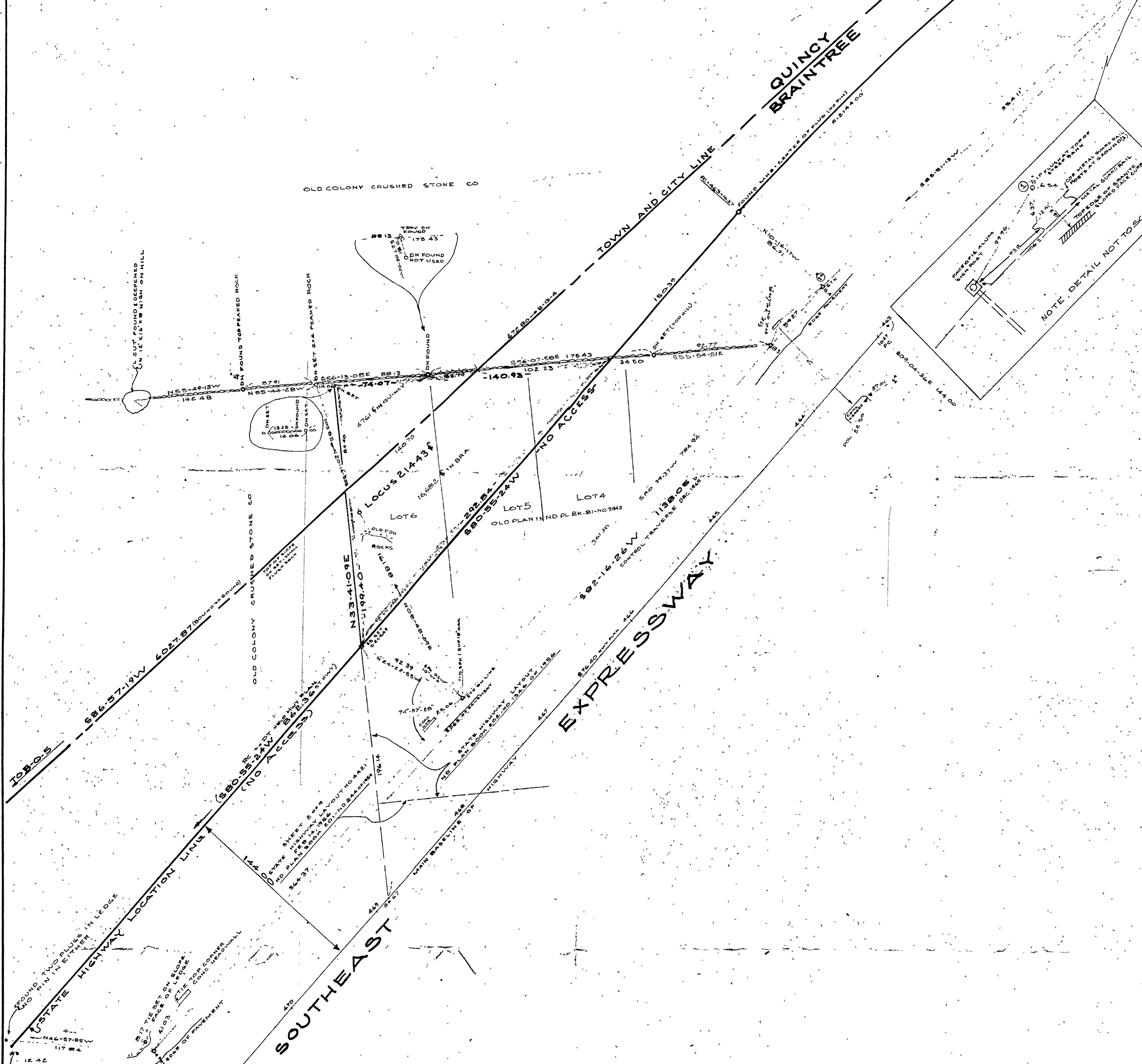


B-0-4

ON FOUND IN PREDOMINANT LEDGE OUTCROP



PLAN OF LAND
QUINCY & BRAINTREE, MASS.
 REGISTRY DISTRICT-NORFOLK COUNTY
 SCALE: 1"=40' DECEMBER 26, 1969
 BRADFORD SAIVETZ & ASSOCIATES INC.
 CONSULTING CIVIL ENGINEERS
 QUINCY, MASS.



I certify that this actual survey was made on the ground in accordance with Land Court Instructions of 1955 between October 25 and November 29, 1969

Roy C. Anderson, Jr.
 ROY C. ANDERSON, JR.
 REGISTERED LAND SURVEYOR

DATE: Dec. 26, 1969



... have shown on this plan... the lines... those of public or private... and that no new lines for division of ownership or for new ways are shown.

Robert S. Raymond
 Registered Land Surveyor

NOTE: DETAIL NOT TO SCALE