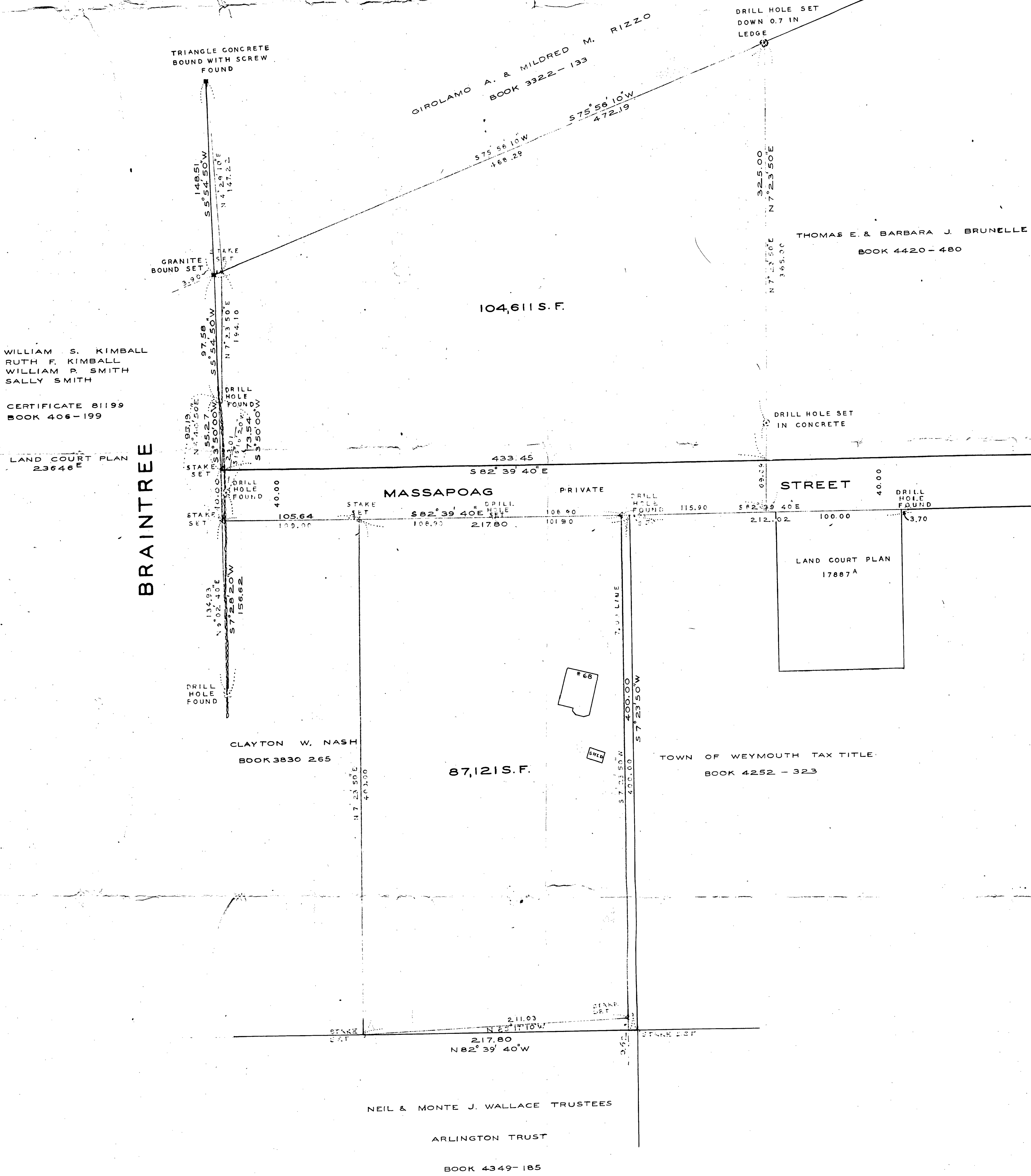
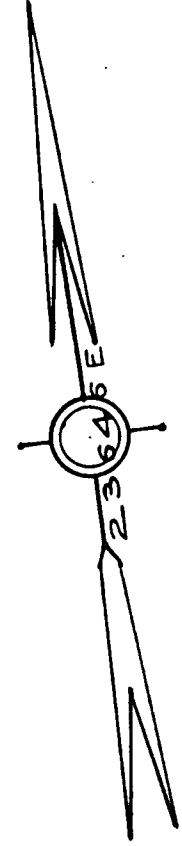


PLAN OF LAND IN  
**WEYMOUTH**  
 NORFOLK COUNTY MASS.  
 SCALE: 1=40' OCT. 30, 1969

PAUL J. KNIGHT  
 REGISTERED LAND SURVEYOR  
 WEYMOUTH, MASS.



I certify that this actual survey was made on the ground in accordance with the land court instructions of 1959 on or between Oct. 11, and Oct. 25, 1965.  
*Paul J. Knight* \* 9313.



WILLIAM S. KIMBALL  
 RUTH F. KIMBALL  
 WILLIAM P. SMITH  
 SALLY SMITH

CERTIFICATE 81199  
 BOOK 406-199

LAND COURT PLAN  
 23646 E

BRAINTREE

THOMAS E. & BARBARA J. BRUNELLE  
 BOOK 4420-480

LAND COURT PLAN  
 17887 A

TOWN OF WEYMOUTH TAX TITLE  
 BOOK 4252-323