

TOWN OF WEYMOUTH

# PLAN OF LAND IN WEYMOUTH AND IN ABINGTON

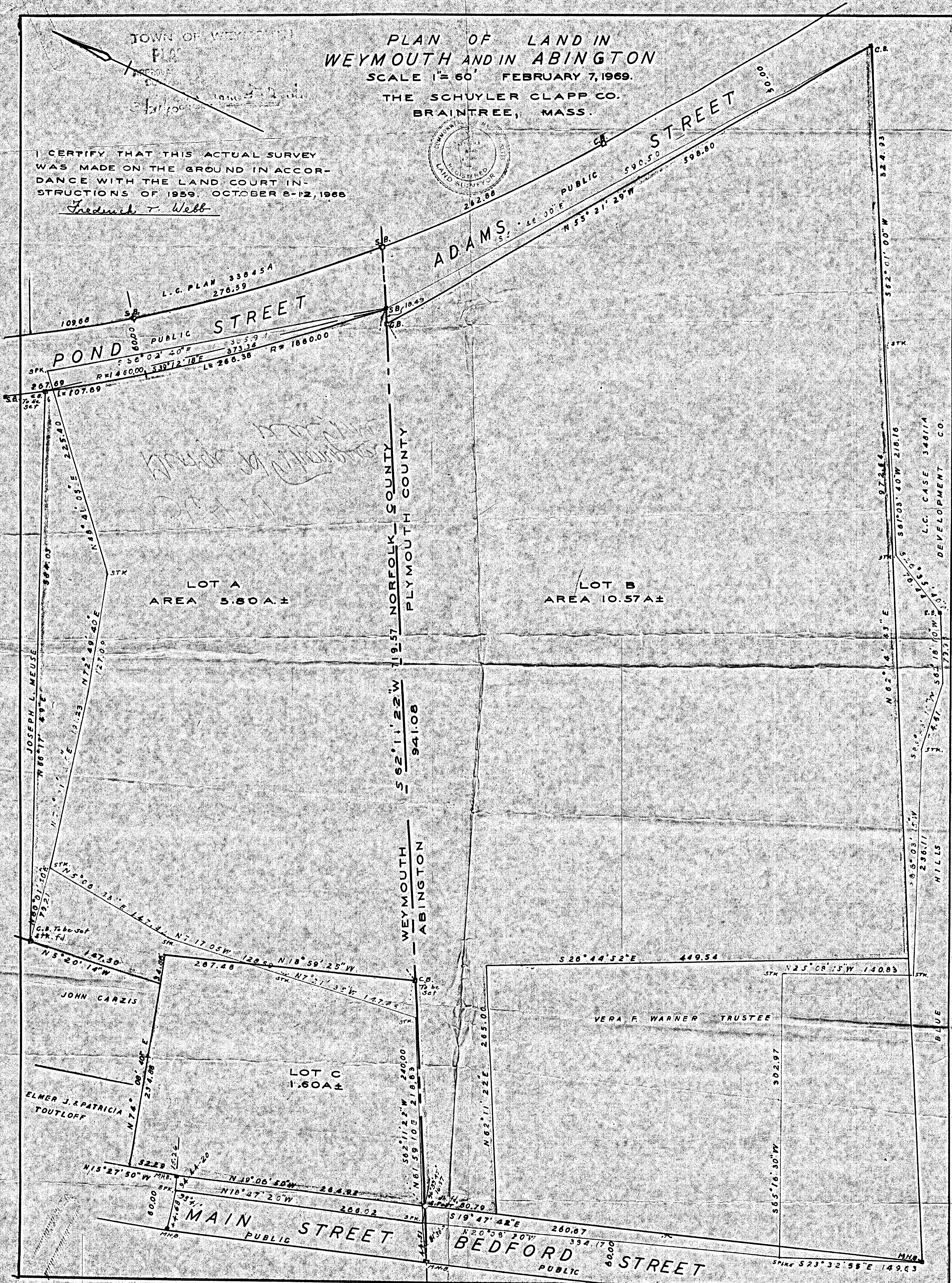
SCALE 1" = 60' FEBRUARY 7, 1969.

THE SCHUYLER CLAPP CO.  
BRAintree, MASS.



I CERTIFY THAT THIS ACTUAL SURVEY WAS MADE ON THE GROUND IN ACCORDANCE WITH THE LAND COURT INSTRUCTIONS OF 1959, OCTOBER 8-12, 1968

*Frederick T. Webb*



L.C. PLAN 33845A  
276.59

POND STREET  
PUBLIC

ADAMS STREET  
PUBLIC

LOT A  
AREA 5.80 A±

LOT B  
AREA 10.57 A±

NORFOLK COUNTY  
PLYMOUTH COUNTY

WEYMOUTH  
ABINGTON

JOHN CARZIS

ELMER J. & PATRICIA TOUTLOFF

LOT C  
1.60 A±

VERA F. WARNER TRUSTEE

MAIN STREET  
PUBLIC

BEDFORD STREET  
PUBLIC