

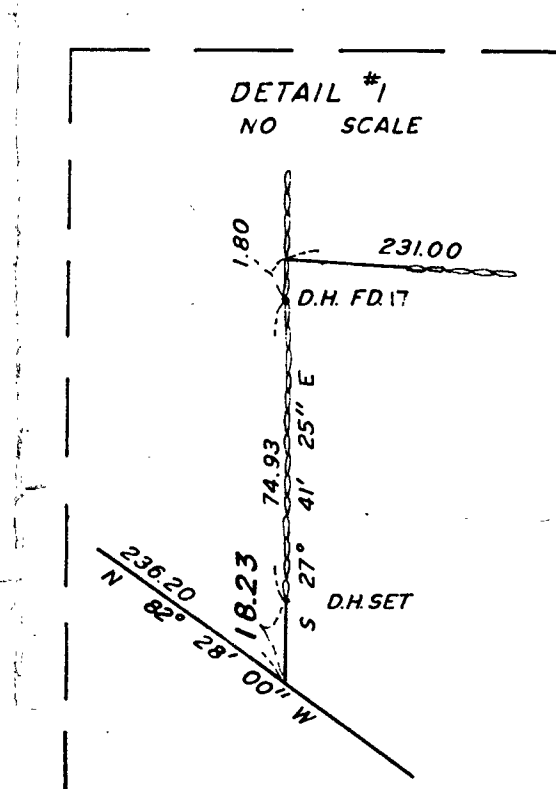
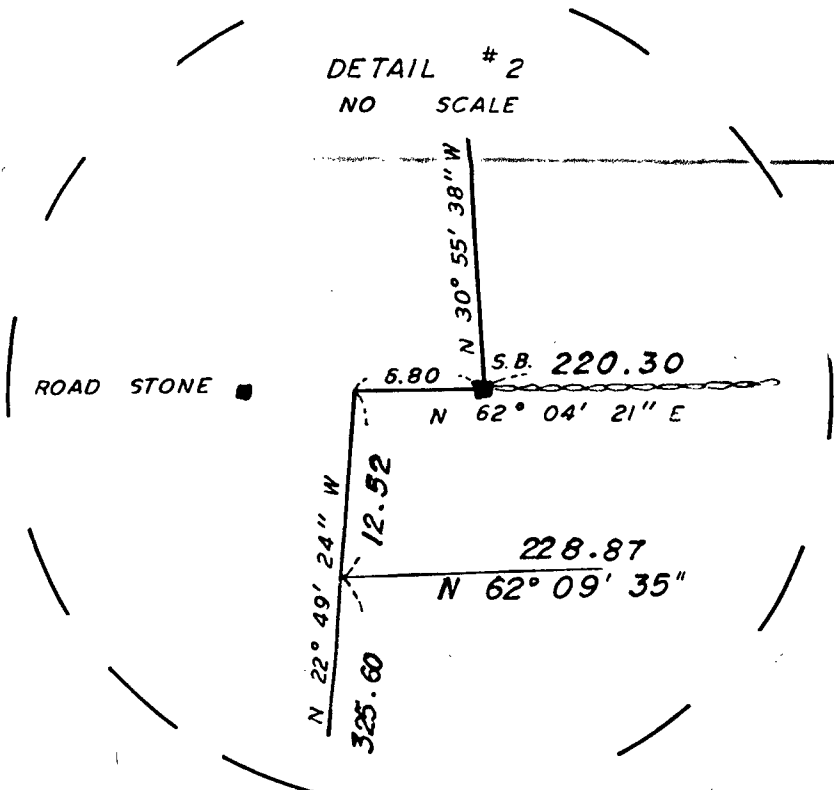
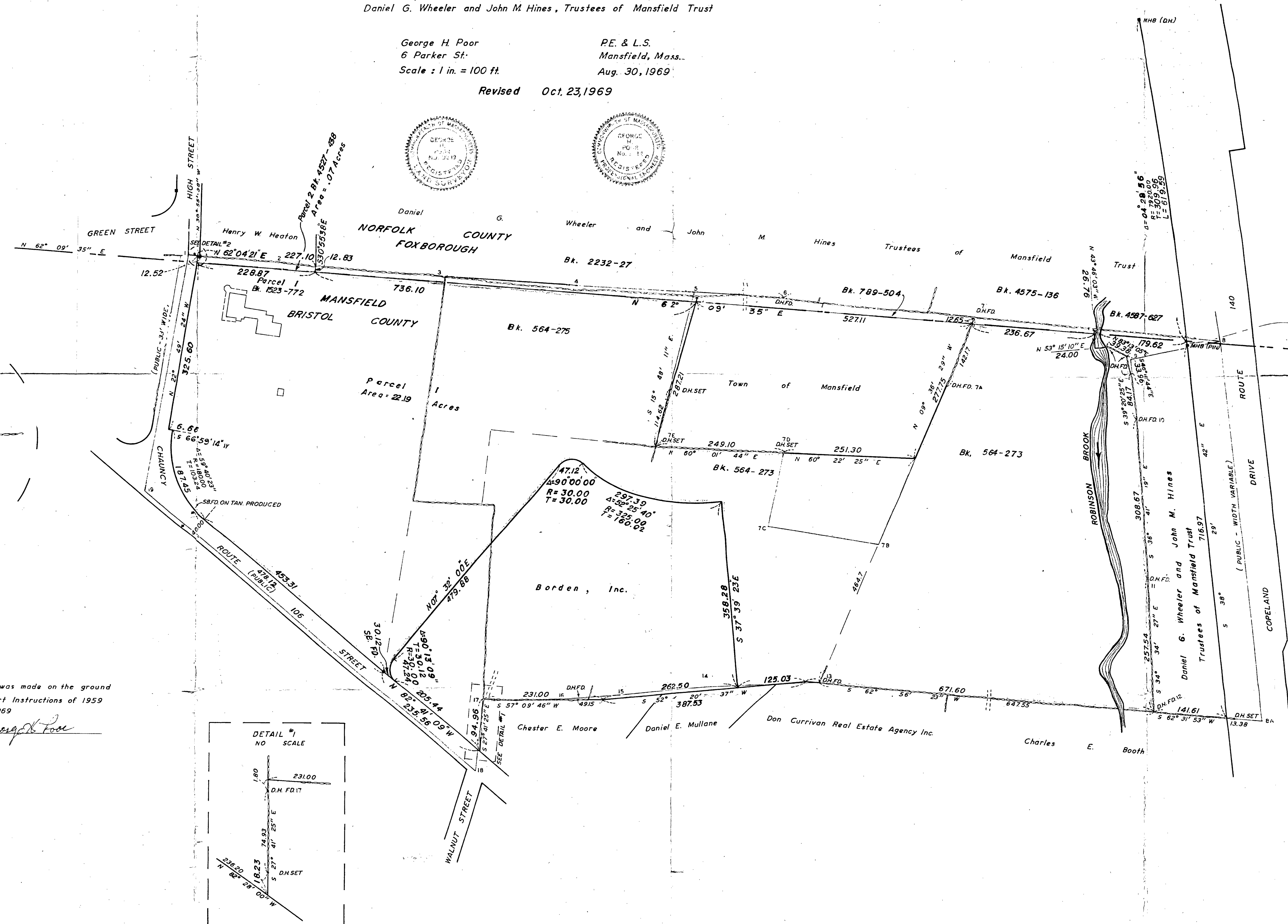
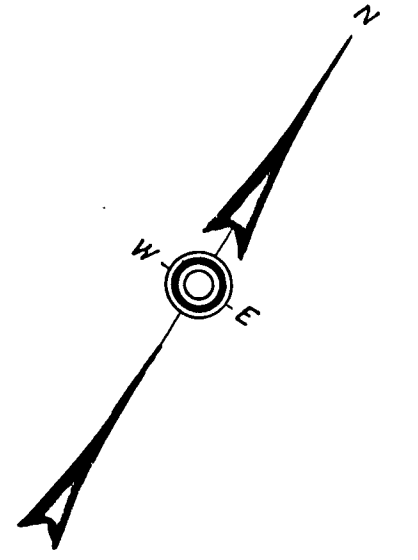
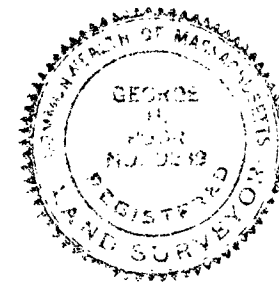
PLAN OF LAND
IN
**FOXBOROUGH NORFOLK COUNTY &
MANSFIELD, BRISTOL COUNTY, MASS.**

Owned by
Daniel G. Wheeler and John M. Hines, Trustees of Mansfield Trust

George H. Poor
6 Parker St.
Scale: 1 in. = 100 ft.

P.E. & L.S.
Mansfield, Mass.
Aug. 30, 1969

Revised Oct. 23, 1969



I certify that this actual survey was made on the ground in accordance with the Land Court Instructions of 1959 on or between Feb. 1 and Aug. 30, 1969
8/30/69 George H. Poor

L = 8.31
Δ = 0° 03' 36"
R = 7920.00
CH = 8.31

Approval under the Subdivision Control Law not required.

FOXBOROUGH PLANNING BOARD
Thomas E. Murphy
Ronald E. [unclear]
Donald M. [unclear]
Harold [unclear]

DATE: December 18, 1969

MANSFIELD PLANNING BOARD
Robert W. [unclear]
Francis [unclear]
Bernard [unclear]
George [unclear]
Richard [unclear]
Donald [unclear]
Carl [unclear]
DATE: Dec 15, 1969