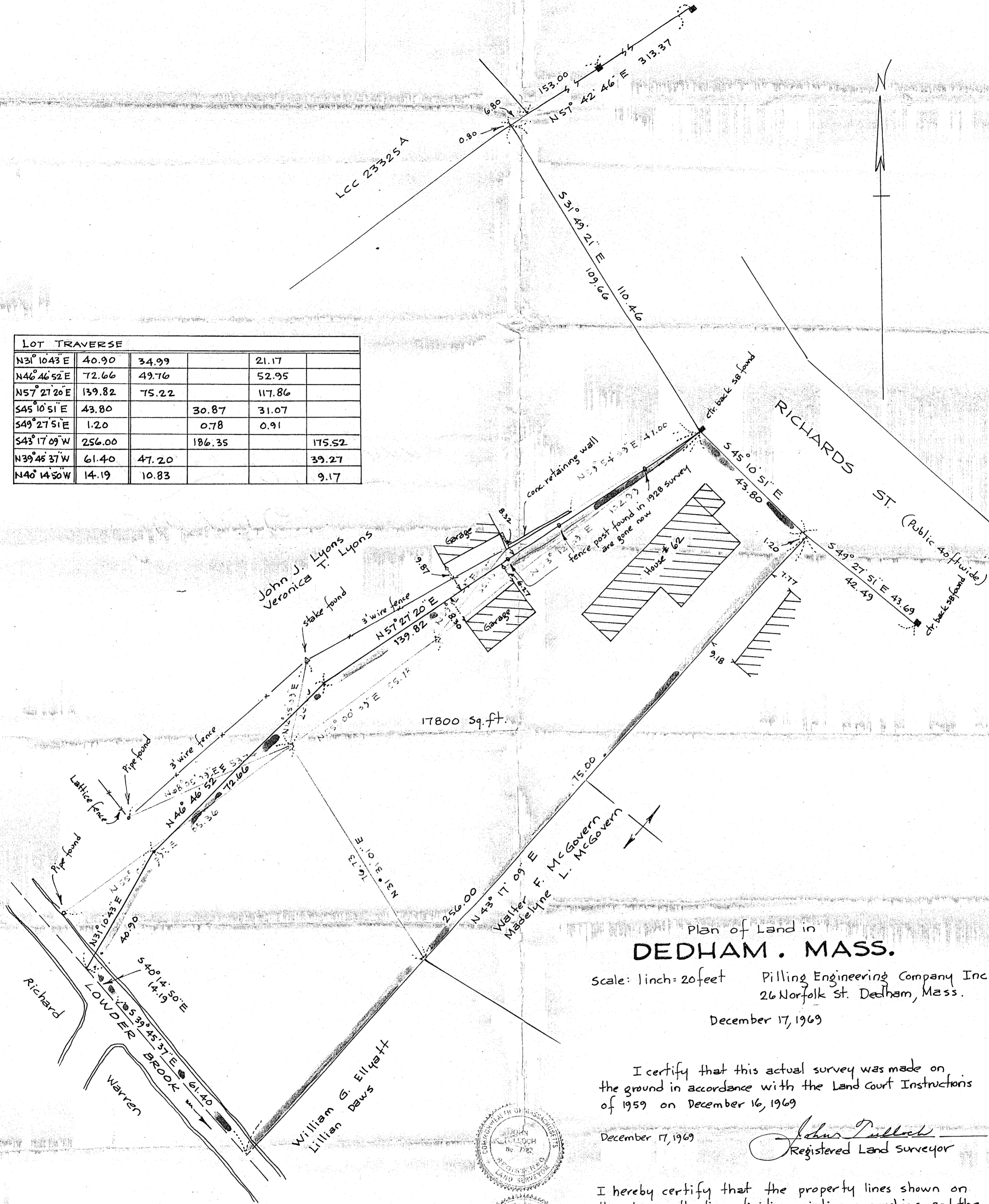


LOT TRAVERSE				
N31° 10' 43" E	40.90	34.99		21.17
N46° 46' 52" E	72.66	49.76		52.95
N57° 27' 20" E	139.82	75.22		117.86
S45° 10' 51" E	43.80		30.87	31.07
S49° 27' 51" E	1.20		0.78	0.91
S43° 17' 09" W	256.00		186.35	175.52
N39° 45' 37" W	61.40	47.20		39.27
N40° 14' 50" W	14.19	10.83		9.17



Plan of Land in
DEDHAM. MASS.

Scale: 1 inch = 20 feet Pilling Engineering Company Inc.
26 Norfolk St. Dedham, Mass.

December 17, 1969

I certify that this actual survey was made on
the ground in accordance with the Land Court Instructors
of 1959 on December 16, 1969

December 17, 1969

John Pulloch
Registered Land Surveyor

I hereby certify that the property lines shown on
this plan are the lines dividing existing ownerships, and the
lines of streets and ways shown are those of public or
private streets or ways already established, and that
no new lines for division of existing ownership or for
new ways are shown

John Pulloch
Registered Land Surveyor
December 17, 1969

