

Bennett + Electric Inc.

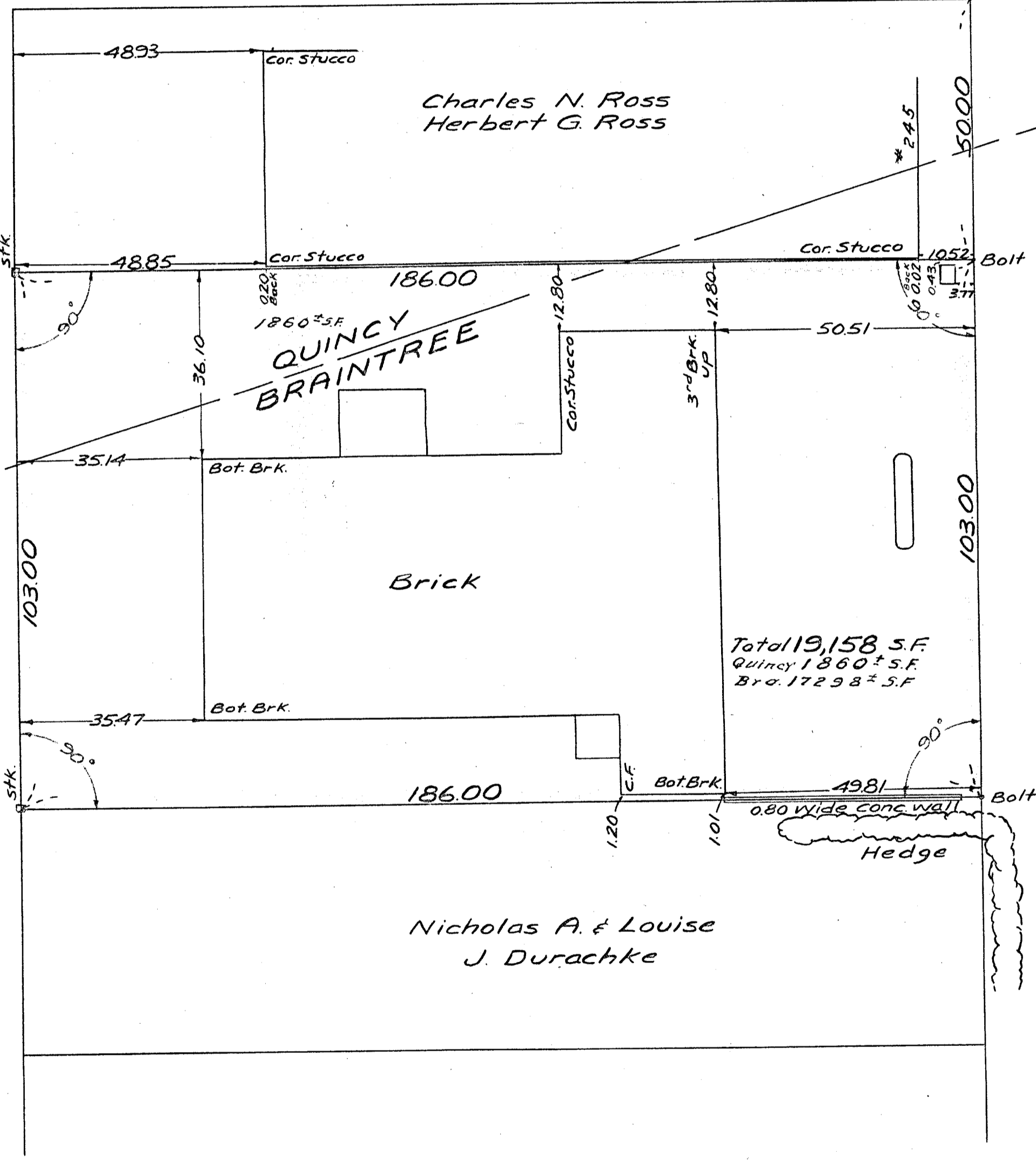
John E.O. Keefe et al
Margaret K.

WAY

(5000' Wide)

PRIVATE

Town Line



OAK GROVE TERRACE

AVENUE

(Public ~ 6000' Wide)

INDEPENDENCE

Town Bound

Approval Under Subdivision Control Law Not Required.
Date: October 18, 1969

Braintree Planning Board.

Plan of Land in Quincy & Braintree, Mass.
Scale 20 feet to an inch

September 27, 1969
Ernest W. Branch Inc, Civil Engineers
Adams Building, 1354 Hancock St, Quincy

APPROVAL UNDER THE SUBDIVISION CONTROL LAW NOT REQUIRED. 10/18, 1969
William F. Baker
AUTHORIZED SIGNATURE FOR PLANNING BOARD - TOWN OF BRAINTREE

Approval Under Subdivision Control Law Not Required.
Date: Oct 9, 1969
J. J. Anderson
Director of Planning
City of Quincy

I certify that this plan was made in accordance with the Land Court Instructions of 1959.
Sept. 27, 1969 Robert S. Boyle C.E.

