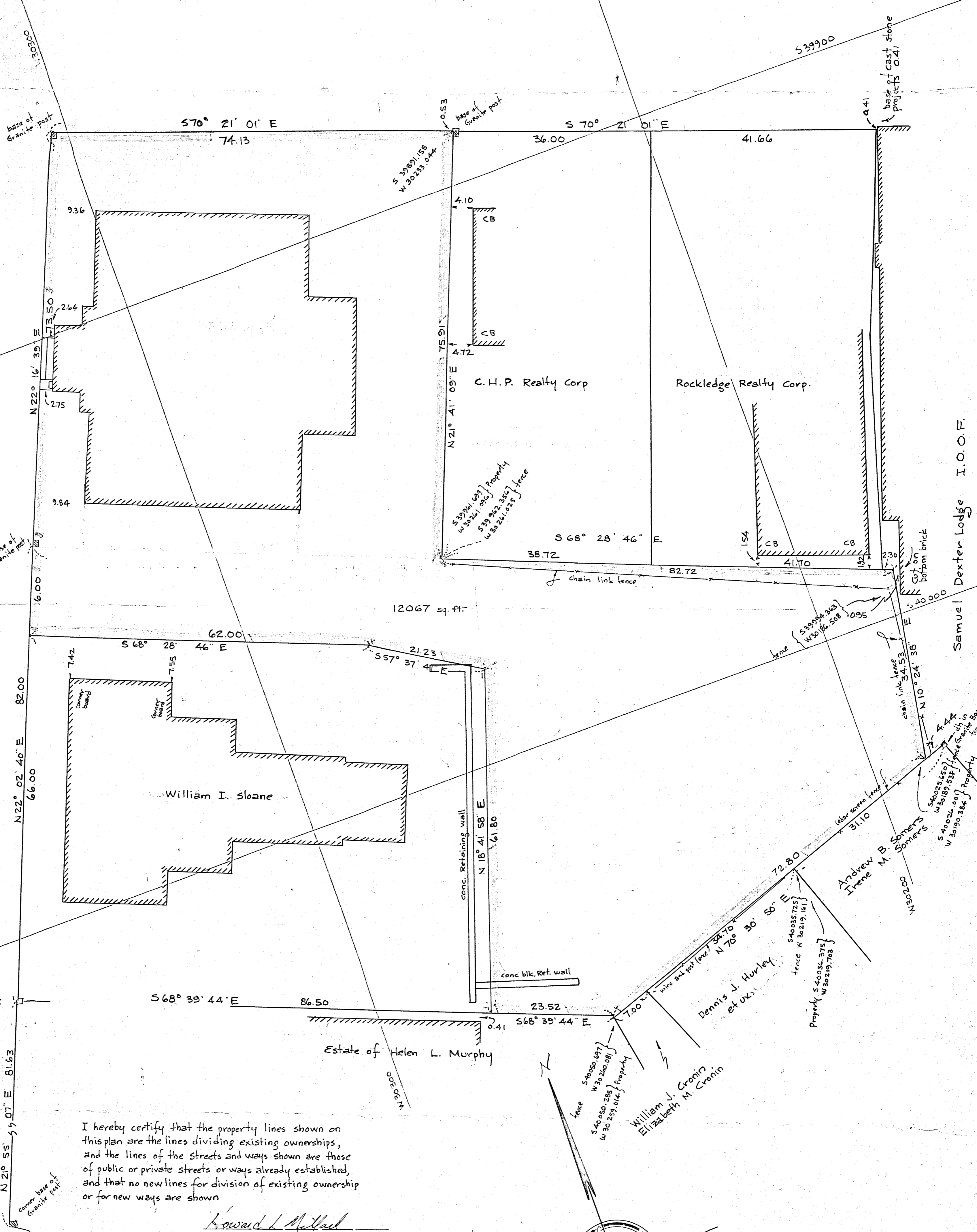


HIGH STREET (Public - Variable width)

PEARL ST. (Public - Variable width)



I hereby certify that the property lines shown on this plan are the lines dividing existing ownerships, and the lines of the streets and ways shown are those of public or private streets or ways already established, and that no new lines for division of existing ownership or for new ways are shown

Howard L. Millard
 Registered Land Surveyor
 December 5, 1969

NORFOLK ST.

Plan of Land in
DEDHAM, MASS.

Scale: 1 inch = 10 feet

Pilling Engineering Company, Inc.
 26 Norfolk St. Dedham, Mass.

April 18, 1961
 amended December 5, 1969

I certify that this actual survey was made on the ground in accordance with the Land Court Instructions of 1959 on April 14, 1961 and December 5, 1969

April 18, 1961
 December 5, 1961

Howard L. Millard
 Registered Land Surveyor



Approval under Subdivision Control Law
 not required

 DEDHAM PLANNING BOARD