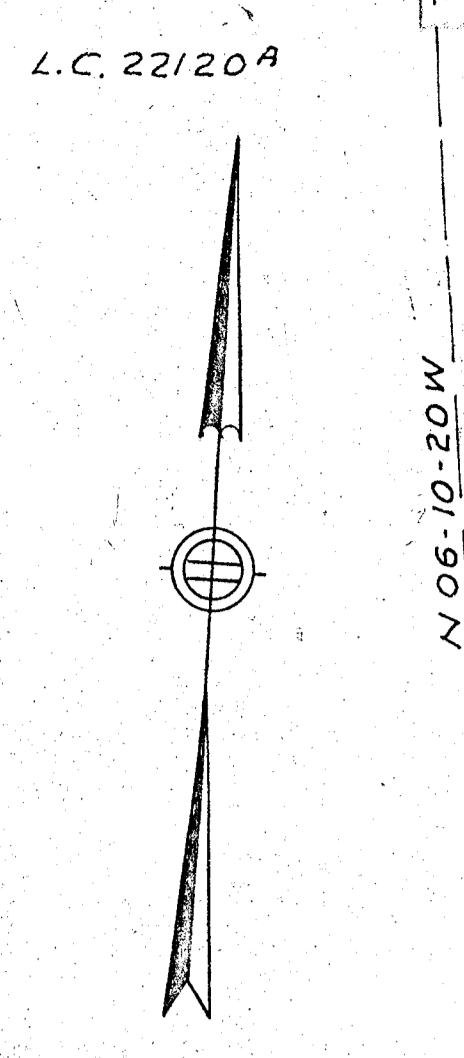


OAK ST. (Public 50' wide)
1936 COUNTY L.O.
N 87-27-08 E 301.80
N 87-22-30 E 402.09

SEE SKETCH A



SEE PLAN OF BRAINTREE FARMS
BY RUSSELL H. WHITING, CIVIL ENGR.
DATED NOV 22, 1913 - PLAN BOOK 1139 PG. 401

ROBERT & EILEEN KEESE

JOHN A. & JEAN GRAZIANO

ROBERT M. & ELSIE C. FILLEBROWN

MAPLE RD. (Private)

ROBERT M. & MARY FILLEBROWN

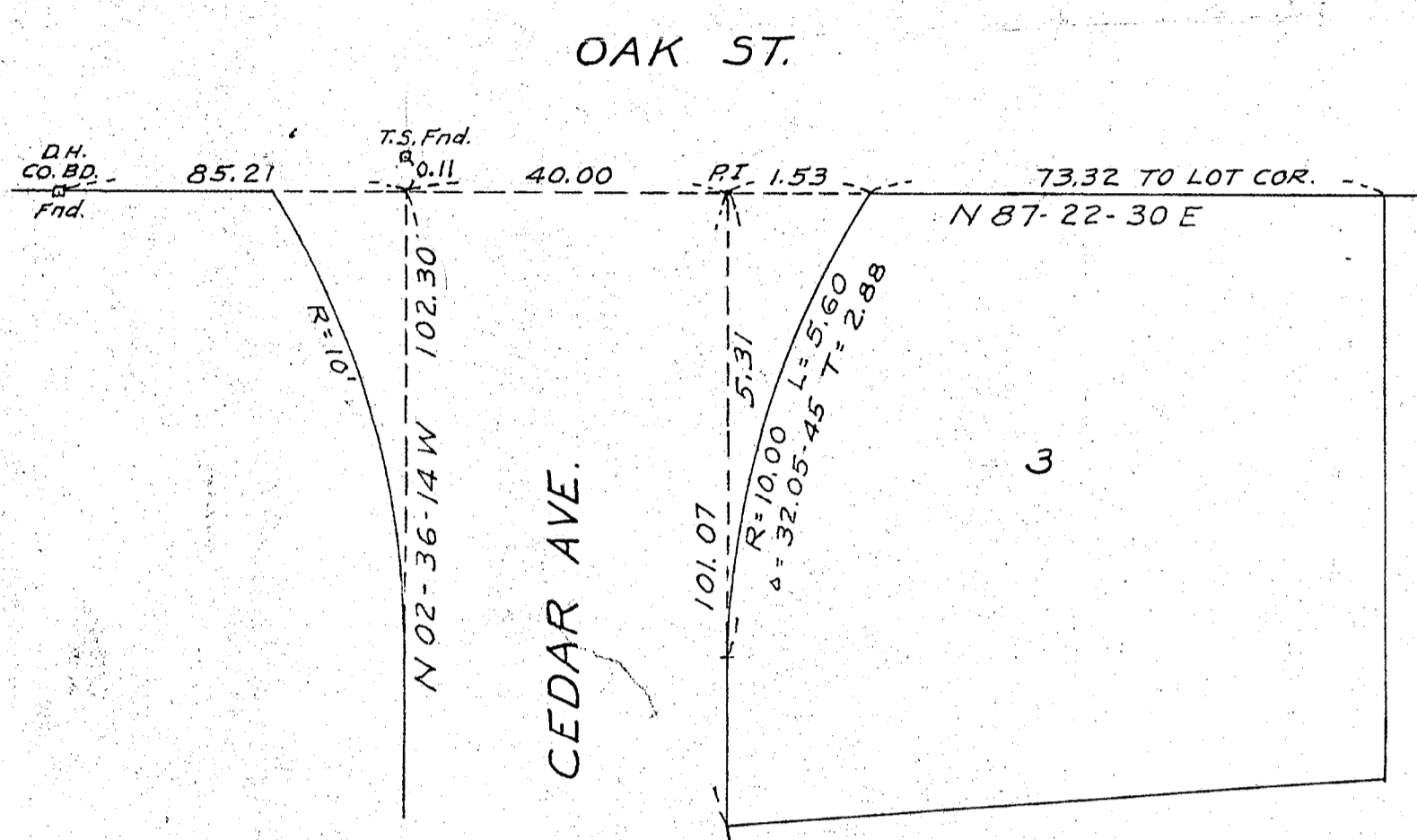
JOHN & MARY A. RINALDI
SEE PLANS NO. 813 TO 820 - 1957
BK. 3576 PG. 35 FOR LOCUS &
PLAN NO. 823 - 1952 BK. 3098
PG. 262 FOR A.S.T. CO. R.O.W.

LOT NUMBERS AS SHOWN REFER
TO PLAN OF BRAINTREE FARMS
AS NOTED TO LEFT.

SEE PLAN NO. 592-1965, BK. 218

SEE PLAN NO. 1496-1960, BK. 210

SEE PLAN NO. 276-1955, BK. 194

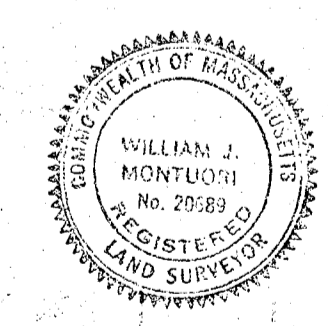


SKETCH A
NOT TO SCALE

PLAN OF LAND IN RANDOLPH

Scale: 1/4" = 40 FT. Oct 3, 1969
GALE ENGINEERING CO. INC.
373 WASHINGTON ST., BRAINTREE, MASS.

I CERTIFY THAT THIS ACTUAL SURVEY WAS
MADE ON THE GROUND IN ACCORDANCE
WITH THE LAND COURT INSTRUCTIONS OF
1959 BETWEEN 4/16/69 AND 3/30/69.
Wm. J. Montuori



"I hereby certify that the property lines shown on this
plan are the lines dividing existing ownerships, and the
lines of the streets and ways shown are those of public
or private streets or ways already established, and that no
new lines for division of existing ownership or for new
ways are shown."
Wm. J. Montuori

30382V

MAY BE FILED	
Date	Dec. 14, 1969
By	G.S.H.
Asst. Filed	
By	
Asst. Filed	
Prints Forwarded	Out

APPROVED	DATE

DEC 10 '69

R=84.07
S=59-08-00
T=47.69

R=38.09
S=64-34-30
T=24.07