

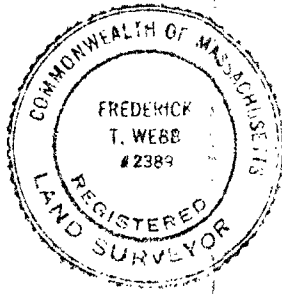
36333A

36333A

PLAN OF LAND IN BRAINTREE AND WEYMOUTH

SCALE 1"=40' AUG. 29, 1969.

THE SCHUYLER CLAPP COMPANY.
BRAINTREE MASS.

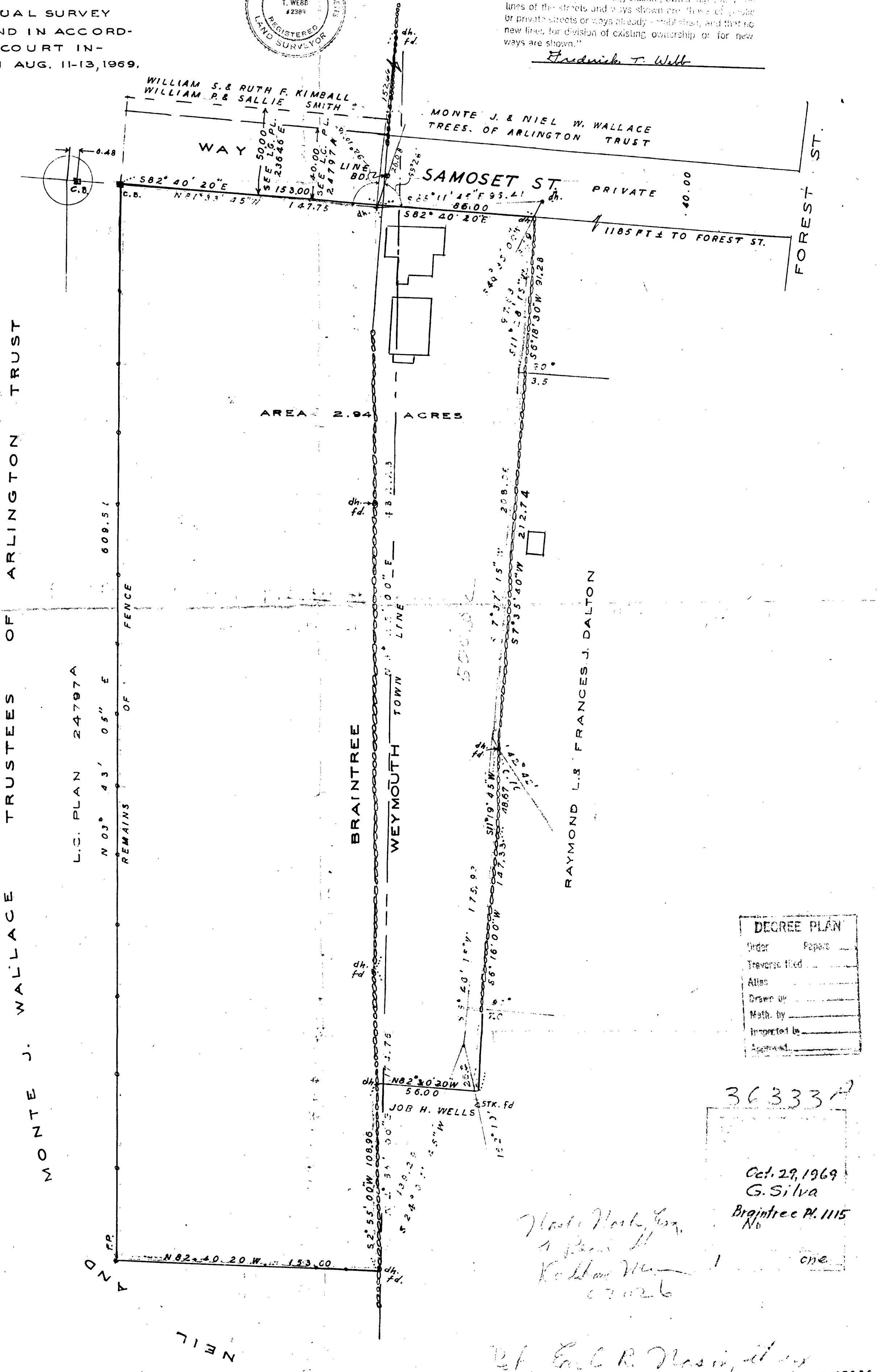


I CERTIFY THAT THIS ACTUAL SURVEY
WAS MADE ON THE GROUND IN ACCORD-
ANCE WITH THE LAND COURT IN-
STRUCTIONS OF 1959. ON AUG. 11-13, 1969.

Frederick T. Webb

"I hereby certify that the property lines shown on this
plan are the lines dividing existing ownership, and the
lines of the streets and ways shown are those of public
or private streets or ways already established, and that no
new lines for division of existing ownership or for new
ways are shown."

Frederick T. Webb



MONTE J. WALLACE TRUSTEES OF ARLINGTON TRUST

L.C. PLAN 24797A
N 03° 43' 05" E

REMAINS OF FENCE

BRAINTREE

WEYMOUTH TOWN LINE

RAYMOND L.S. FRANCES J. DALTON

DECREE PLAN	
Order	Pages
Traverse	filed
Attest	
Drawn by	
Math. by	
Inspected by	
Approved	

36333A

Oct. 29, 1969
G. Silva
Braintree Pl. 1115
No

Handwritten notes and signatures

Handwritten signature

JN 17856

36333A

36333A