

A 55808

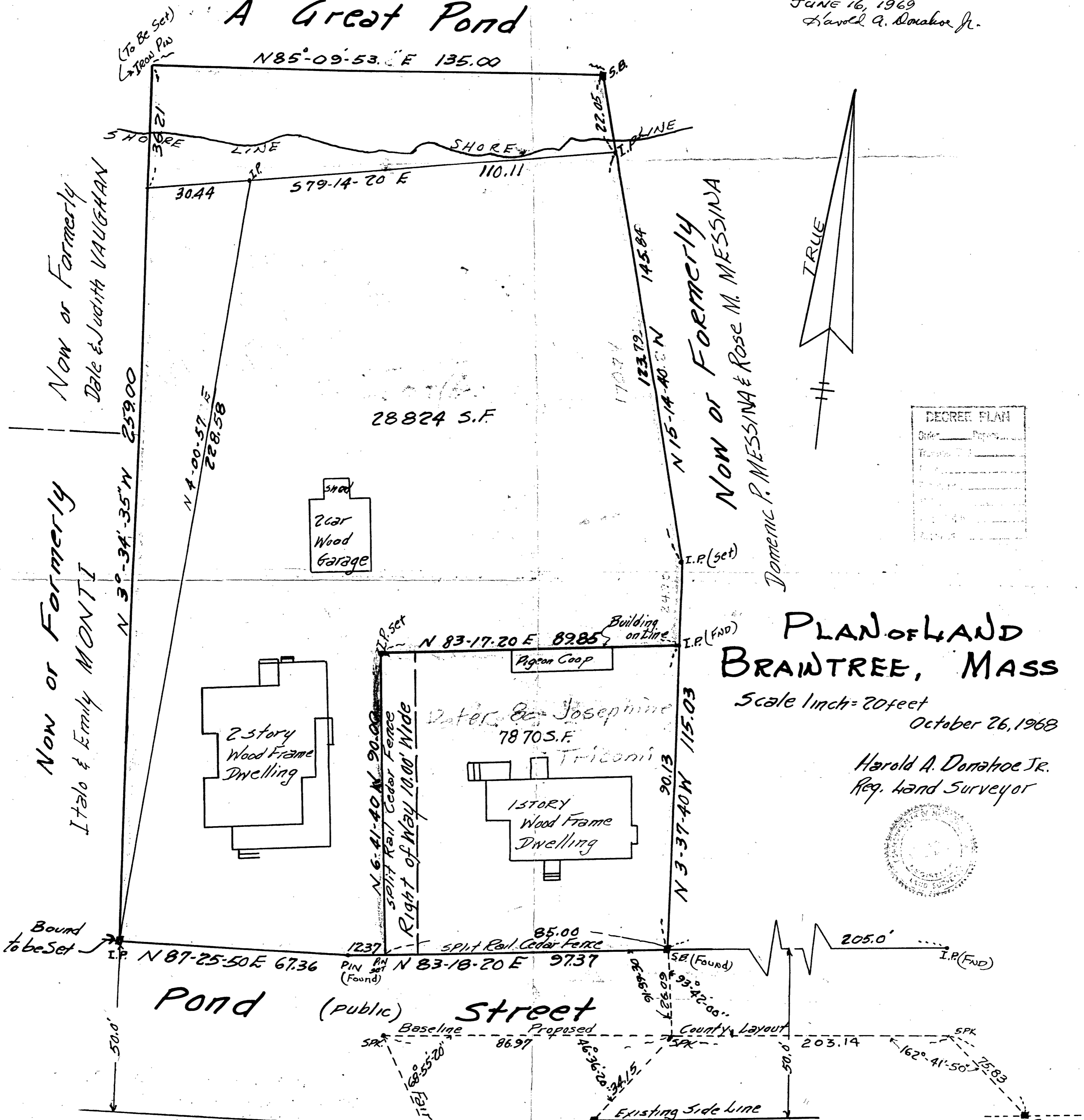
I certify that the property lines shown are the lines dividing existing ownerships and the lines of streets and ways shown are those of public or private streets or ways already established and that no new lines for division of existing ownership or for new ways are shown.

JUNE 16, 1969
Harold A. Donahoe Jr.

Sunset Lake A Great Pond

I certify that the conditions on the ground are the same to day as they were when surveyed

JUNE 16, 1969
Harold A. Donahoe Jr.



DEGREE PLAN	
Order	Page

PLAN OF LAND BRAintree, MASS

Scale 1 inch = 20 feet
October 26, 1968

Harold A. Donahoe Jr.
Reg. Land Surveyor



36327A
 MAY BE FILED
 Date Oct. 28, 1969
 R. C. C.
 Braintree Pl. 1040
 Filed
 owner 7870
 County
 City
 ✓ Prints Made Two

I certify that this actual survey was made on the ground in accordance with LAND COURT INSTRUCTIONS OF 1959, between Oct. 16 & Oct. 26, 1968.

Harold A. Donahoe Jr.
Harold A. Donahoe Jr.
18 Nicholas Road
Braintree

36327A