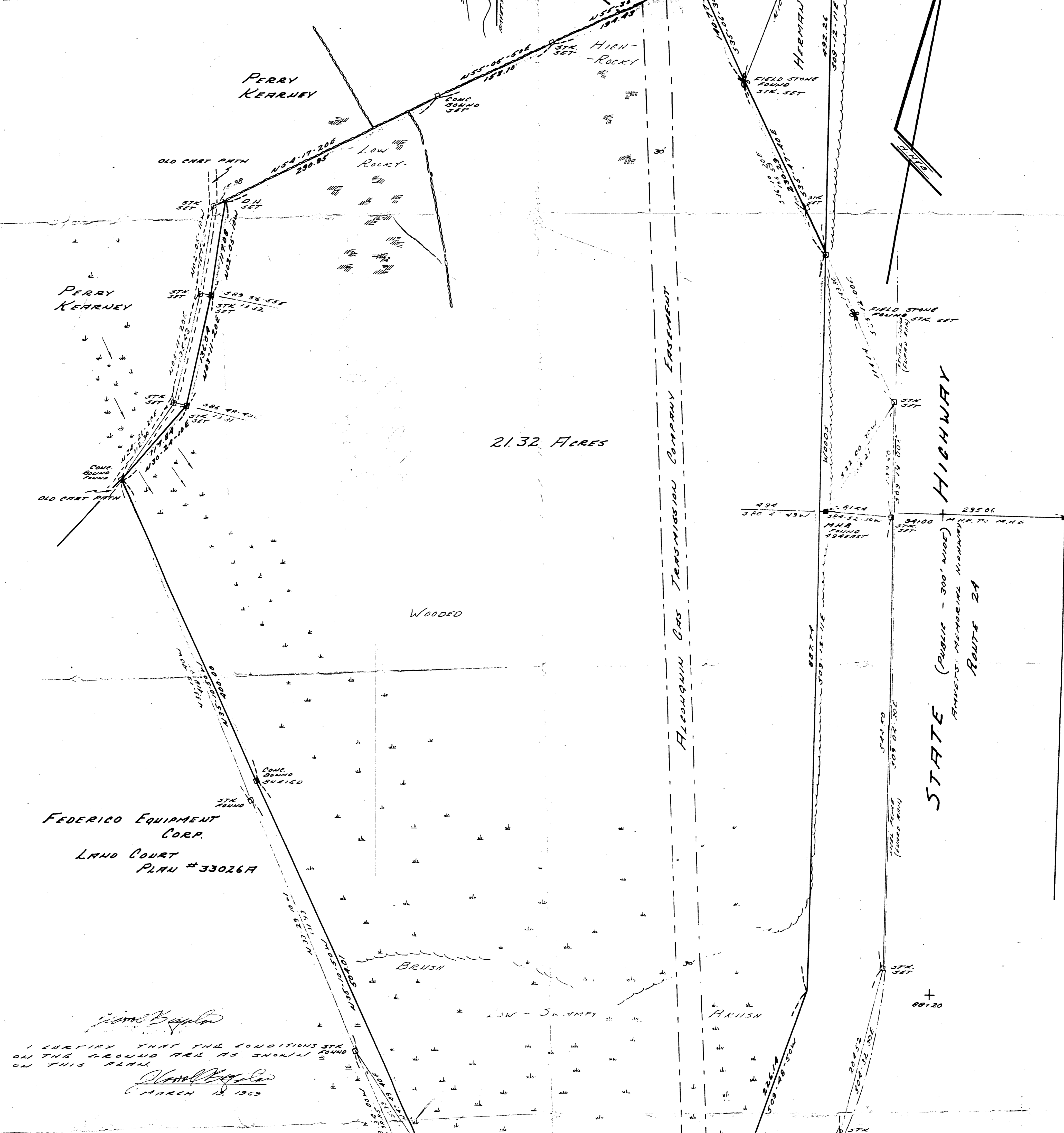


PROPERTY	BEARING	DIST.	N	S	E	W
	S35-06-30E	140.77		115.16	80.36	
	S35-47-40E	230.23		186.79	134.71	
	S09-12-11E	897.74		876.31	141.97	
	S09-40-50W	226.14		222.82		38.64
	S48-32-41W	241.10		159.62		189.70
	S72-49-14W	106.71		79.27		72.53
	S24-32-53W	7.29		3.93		1.71
	N35-10-50W	1126.92	921.11			649.30
	N30-24-10E	117.84	101.64		59.64	
	N03-11-20E	136.04	135.83		7.57	
	N02-05-10W	117.08	117.00			4.26
	N54-17-20E	290.95	163.83		236.24	
	N55-05-50E	153.10	87.60		125.36	
	N55-35-20E	194.43	149.88		160.41	
			1443.83	1443.31	94706	94704



TRAVERSE	BEARING	DIST.	N	S	E	W
	S35-06-30E	140.77		115.16	80.36	
	S35-18-20E	166.59		134.25	99.14	
	S35-12-00E	257.94		210.77	148.19	
	S09-19-00E	139.40		137.56	22.57	
	S09-04-30E	544.50		532.68	85.88	
	S04-32-30W	204.52		203.88		16.20
	S31-07-00W	176.42		141.30		105.65
	S44-08-00W	255.55		183.41		172.95
	N44-42-30W	286.09	203.32			201.26
	S03-17-20W	31.01		3.62		30.89
	N33-04-00W	138.85	115.70			71.77
	N33-29-10W	331.93	276.84			183.74
	N33-15-40W	418.85	349.37			230.73
	N24-21-20E	112.38	102.38		46.35	
	N03-11-20E	135.43	135.22		7.53	
	N42-05-10W	107.62	107.35			3.92
	N54-17-20E	306.93	179.15		249.22	
	N55-05-50E	153.10	87.60		125.36	
	N55-35-20E	194.43	149.88		160.41	
			1443.83	1443.31	1425.81	1425.82

I CERTIFY THAT THE CONDITIONS STK ON THE GROUND ARE AS SHOWN ON THIS PLAN
 JAMES BEAULAN
 MARCH 12, 1965

WE CERTIFY THAT THIS ACTUAL SURVEY WAS MADE ON THE GROUND IN ACCORDANCE WITH THE LAND COURT INSTRUCTIONS OF 1959 BETWEEN DEC. 1 AND JAN. 4, 1965.

JAMES BEAULAN
 ENGINEER
 JANUARY 12, 1965

LAND COURT
 PLAN OF LAND IN AVON
 OWNED BY
 RICHARD D. FEDERICO
 SCALE: 1"=60' JAN 11, 1965
 WYMAN-WYMAN & BOYNTON-ENGINEERS
 68 MAIN ST. BROCKTON, MASS.

FIELD: RALPH CHASE; PLAN: RALPH CHASE; CHECK: RALPH CHASE