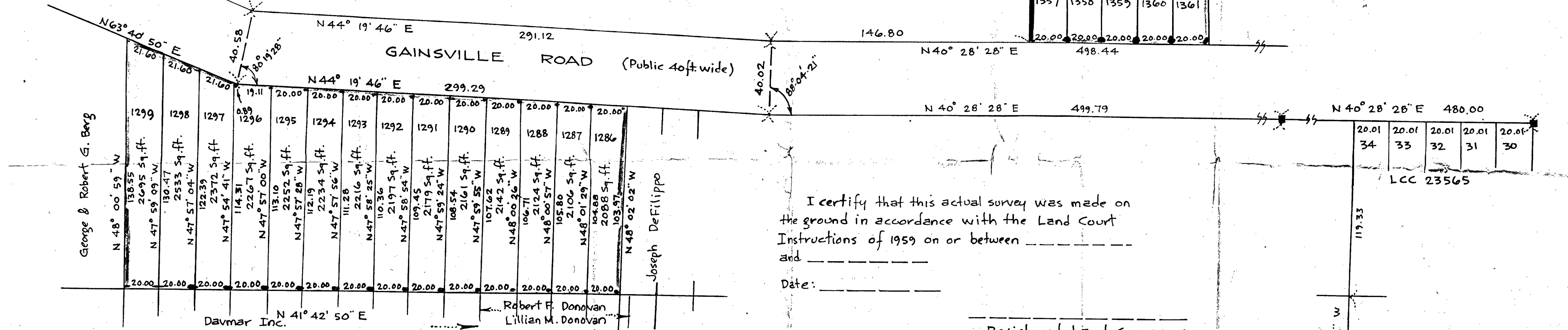
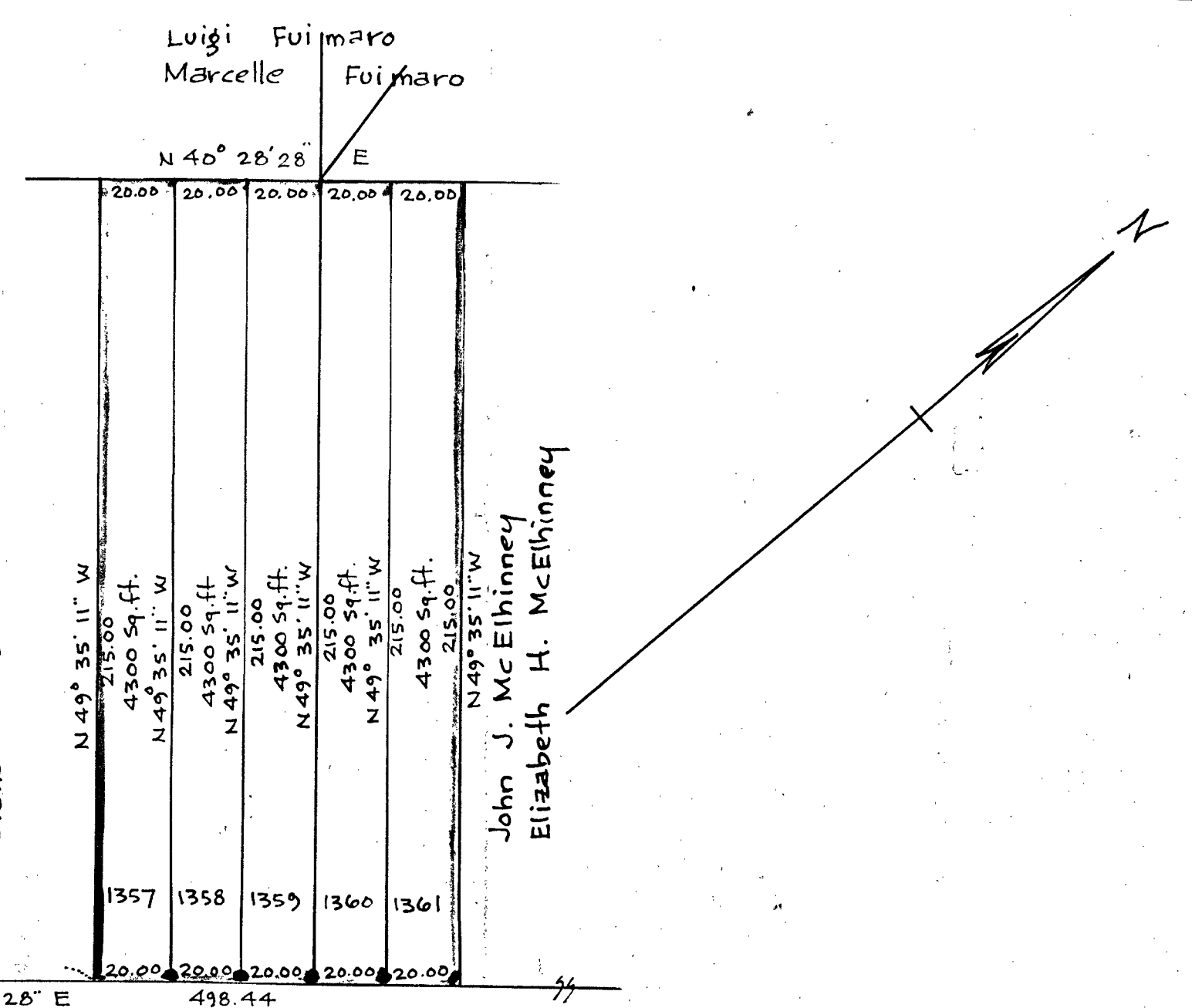


Traverse lot 1286				
N44°19'46"E	20.00	14.307		13.976
S48°02'02"E	103.97		69.525	77.307
S41°42'50"W	20.00		14.930	
N48°01'29"W	104.88	70.148		77.975
Traverse lot 1287				
N44°19'46"E	20.00	14.307		13.976
S48°01'29"E	104.88		70.148	77.975
S41°42'50"W	20.00		14.930	
N48°00'57"W	105.80	70.771		78.643
Traverse lot 1288				
N44°19'46"E	20.00	14.307		13.976
S48°00'57"E	105.798		70.771	78.643
S41°42'50"W	20.00		14.930	
N48°00'26"W	106.71	71.394		79.311
Traverse lot 1289				
N44°19'46"E	20.00	14.307		13.976
S48°00'26"E	106.71		71.394	79.311
S41°42'50"W	20.00		14.930	
N47°59'55"W	107.62	72.017		79.979

Traverse lot 1290				
N44°19'46"E	20.00	14.307		13.976
S47°59'55"E	107.62		72.017	79.979
S41°42'50"W	20.00		14.930	
N47°59'24"W	108.54	72.640		80.647
Traverse lot 1291				
N44°19'46"E	20.00	14.307		13.976
S47°59'24"E	108.54		72.640	80.647
S41°42'50"W	20.00		14.930	
N47°58'54"W	109.45	73.263		81.315
Traverse lot 1292				
N44°19'46"E	20.00	14.307		13.976
S47°58'54"E	109.45		73.263	81.315
S41°42'50"W	20.00		14.930	
N47°58'25"W	110.36	73.886		81.983
Traverse lot 1293				
N44°19'46"E	20.00	14.307		13.976
S47°58'25"E	110.36		73.886	81.983
S41°42'50"W	20.00		14.930	
N47°57'56"W	111.28	74.509		82.651



I certify that this actual survey was made on the ground in accordance with the Land Court Instructions of 1959 on or between _____ and _____
 Date: _____

Registered Land Surveyor

Traverse lot 1294				
N44°19'46"E	20.00	14.307		13.976
S47°57'56"E	111.28		74.509	82.651
S41°42'50"W	20.00		14.930	
N47°57'28"W	112.19	75.132		83.319
Traverse lot 1295				
N44°19'46"E	20.00	14.307		13.976
S47°57'28"E	112.19		75.132	83.319
S41°42'50"W	20.00		14.930	
N47°57'08"W	113.10	75.755		83.987
Traverse lot 1296				
N44°19'46"E	19.11	13.670		13.354
S47°57'00"E	113.104		75.755	83.987
S41°42'50"W	20.00		14.930	
N47°54'41"W	114.31	76.620		84.831
Traverse lot 1297				
N63°40'50"E	21.60	9.577		19.361
S47°54'41"E	114.31		76.620	84.831
S41°42'50"W	20.00		14.930	
N47°57'04"W	122.39	81.973		90.884

Traverse lot 1298				
N63°40'50"E	21.60	9.577		19.361
S47°57'04"E	122.39		81.973	90.884
S41°42'50"W	20.00		14.930	
N47°59'09"W	130.47	87.326		96.937
Traverse lot 1299				
N63°40'50"E	21.60	9.577		19.361
S47°59'09"E	130.47		87.326	96.937
S41°42'50"W	20.00		14.930	
N48°00'59"W	138.55	92.679		102.99

I hereby certify that the property lines shown on this plan are the lines of existing ownerships, and that lines of the streets and ways shown are those of public or private streets or ways already established, and that no new lines for division of existing ownership or for new ways are shown.

Registered Land Surveyor
 Date: _____

Plan of Land in
DEDHAM, MASS.

Scale: 1 inch = 40 feet Pilling Engineering Company Inc.
 26 Norfolk St. Dedham, Mass.

Approval under subdivision Control Law
 not required Date: _____

PRELIMINARY ONLY

DEDHAM PLANNING BOARD

NOTE: See plan of Readville Gardens recorded in Norfolk Registry of Deeds Plan Book 72 Plan # 3473