

PLAN OF LAND IN CANTON, NORFOLK COUNTY, MASS.

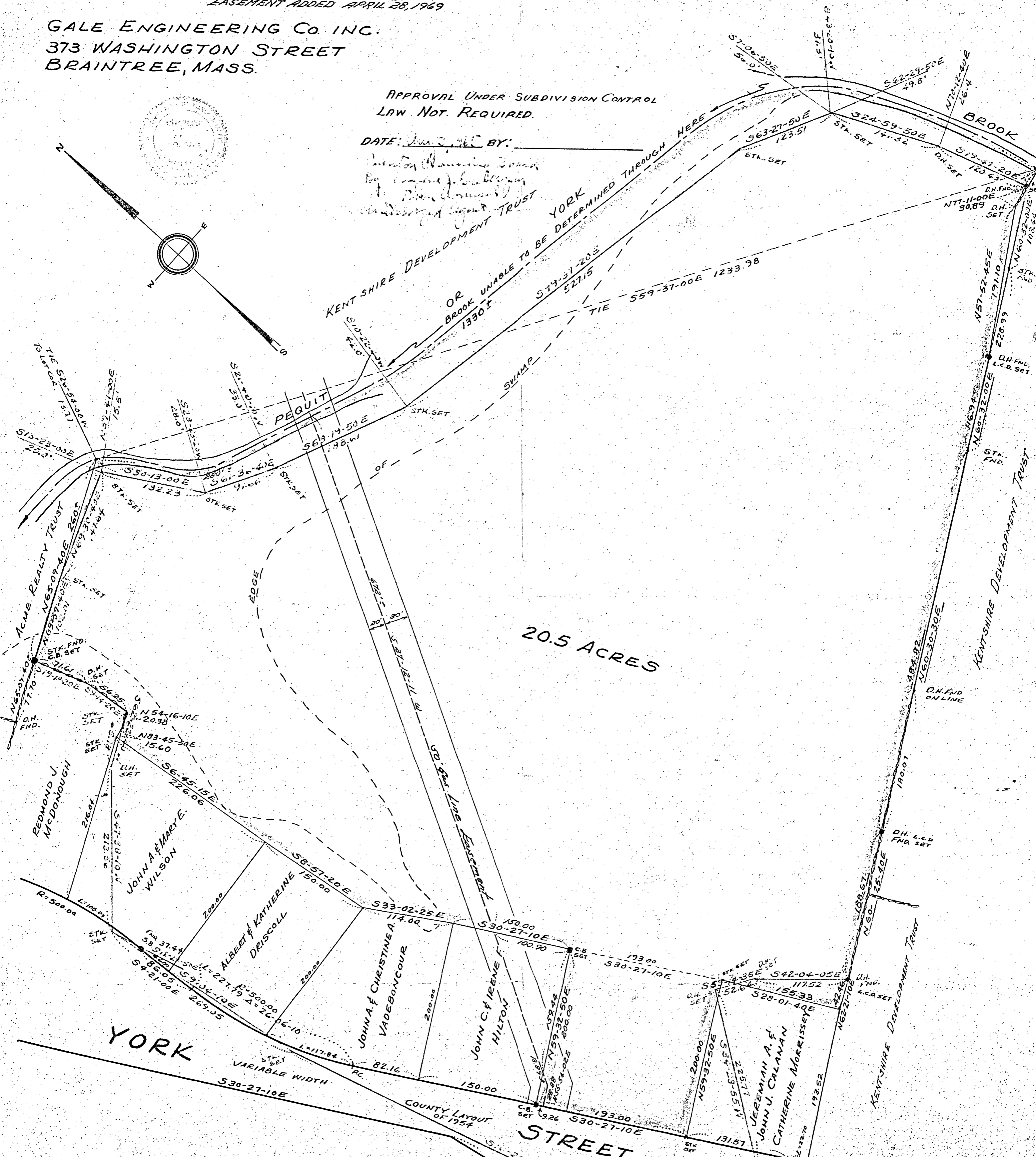
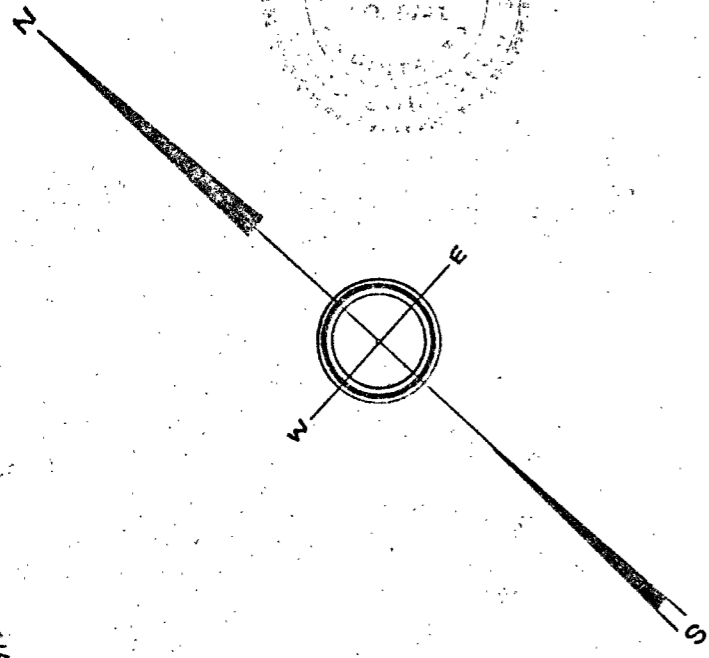
SCALE 1"=80' JULY 26, 1965
EASEMENT ADDED APRIL 28, 1969

GALE ENGINEERING CO. INC.
373 WASHINGTON STREET
BRAINTREE, MASS.

JN 254A

APPROVAL UNDER SUBDIVISION CONTROL
LAW NOT REQUIRED.

DATE: Jun 2, 1965 BY: _____
Winton W. Manning
By Charles E. Gale
Surveyor



I CERTIFY THAT THIS ACTUAL SURVEY WAS MADE ON
THE GROUND IN ACCORDANCE WITH THE LAND COURT INST-
RUKCTIONS OF 1959 BETWEEN MAY 15, 1965 AND JULY 26, 1965.

Charles E. Gale
CHARLES E. GALE DATE 8-3-65

RE-EXAMINED IN THE FIELD ON 3/29/66
Charles E. Gale
RE-EXAMINED IN THE FIELD ON 4/25/69
Charles E. Gale

J.N. 254A