

BRAINTREE PLANNING BOARD  
DATE \_\_\_\_\_

APPROVAL UNDER THE  
SUBDIVISION CONTROL LAW  
NOT REQUIRED Feb. 13 69  
*Joseph M. Magaldi*  
PLANNING BOARD - TOWN OF BRAINTREE

Inferior Angle	Bearing	Distance	N	S	E	W
98-07	N 68-21 E	178.91	66.01		166.29	
186-51	N 75-12 E	71.87	18.36		69.49	
177-51	N 73-03 E	108.92	31.75		104.19	
105-23	N 1-34 W	30.00	29.99			.82
208-28	N 26-54 E	33.65	30.91		15.22	
152-21	N 0-45 W	24.49	24.49			.32
105-54	N 74-51 W	24.49	6.05		22.34	
245-05	N 9-46 W	31.01	30.56		5.26	
156-11	N 33-35 W	18.63	15.52		10.30	
162-00	N 31-35 W	34.52	26.45		27.05	
200-39	N 30-56 W	60.57	51.95		31.14	
202-32	N 8-24 W	59.88	53.24		8.75	
244-44	N 56-20 E	28.16	15.61		23.44	
95-00	N 28-40 W	192.87	169.23		68.41	
178-20	N 30-20 W	135.46	116.92		65.31	
69-21	S 39-01 W	103.74		80.60	48.12	
188-32	S 47-33 W	65.20		44.01	121.63	
217-42	S 85-15 W	122.05		10.11	33.55	
159-51	S 65-06 W	36.99		15.57	23.57	
158-37	S 43-43 W	34.11		24.65	35.83	
213-09	S 76-52 W	26.79		8.36		
78-13	S 24-55 E	139.60		126.61	58.81	
194-20	S 10-35 E	83.45		82.03	15.33	
169-05	S 21-30 E	161.12		149.91	59.05	
171-44	S 29-46 E	167.39		145.30	83.10	
4140-00		1982.22	687.14	687.15	594.92	594.92

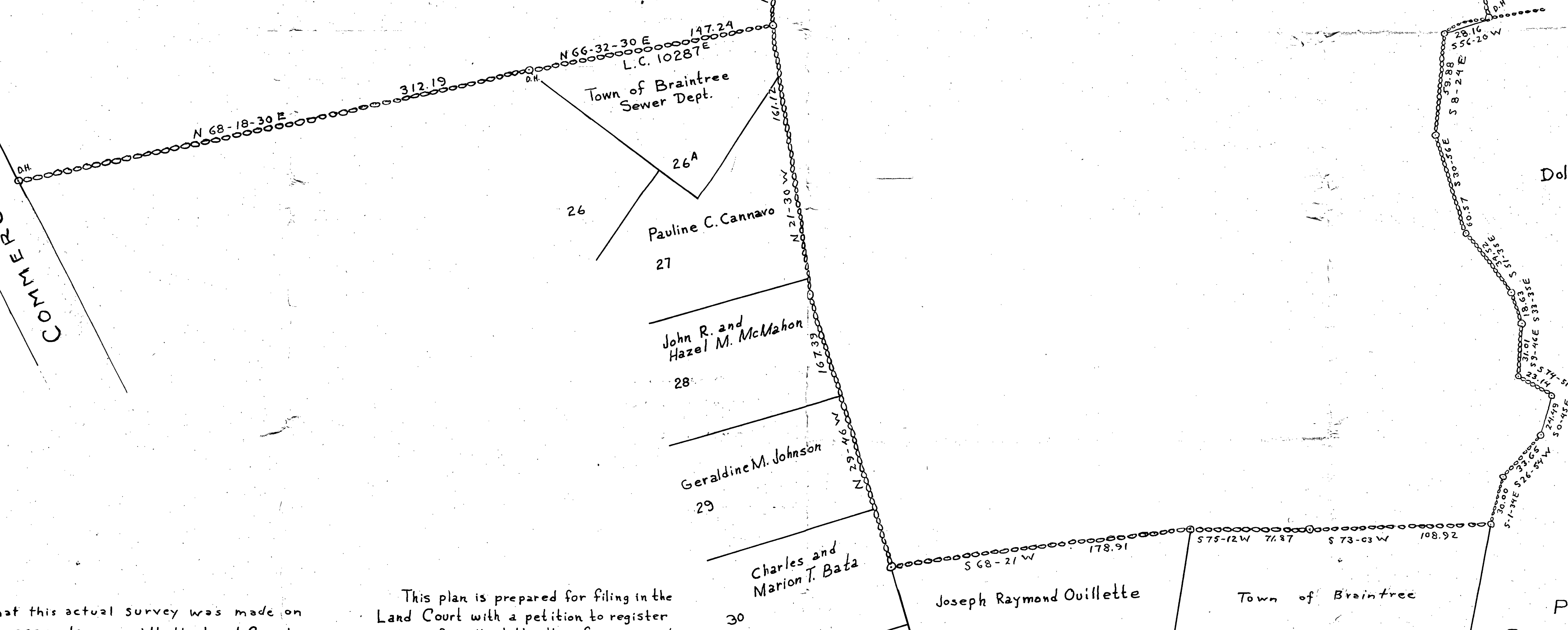
ST  
COMMERCIAL  
FORE RIVER R.R. CORP.

Bates Realty Trust  
L.C. 602 A

Bates Realty Trust  
L.C. 602 A

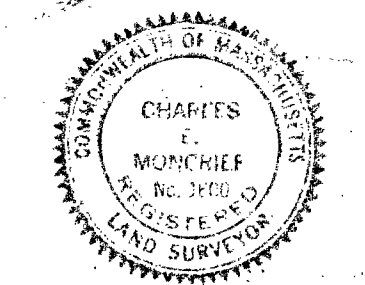
Bates Realty Trust

5.66 Acres



I certify that this actual survey was made on the ground in accordance with the Land Court Instructions of 1959 between September 1 and September 5 1968  
Jan 29 1969 *Charles E. Moncrief*

This plan is prepared for filing in the Land Court with a petition to register and confirm the title therefore approval under the subdivision control law not required.



PLAN OF LAND  
BRAINTREE MASS  
Scale 40 Feet to an Inch  
JANUARY 29 1969  
C. E. MONCRIEF SURVEYOR  
15 FLAGG ST. QUINCY MASS