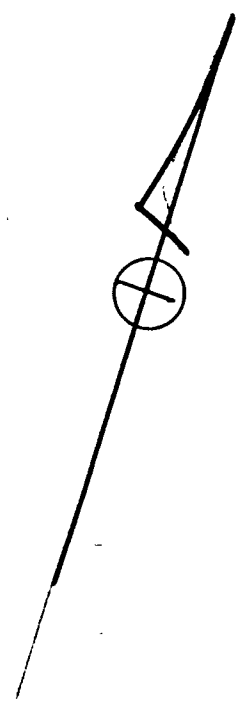


PLAN OF LAND IN BRAINTREE
 SCALE 1"=20' NOVEMBER 14, 1968.
 THE SCHUYLER CLAPP CO.
 BRAINTREE MASS.



I CERTIFY THAT THIS ACTUAL SURVEY
 WAS MADE ON THE GROUND IN ACCORD-
 ANCE WITH THE LAND COURT INSTRUCC-
 TIONS OF 1959, ON JUNE 27 & NOV. 13, 1968.

Frederick T. Webb

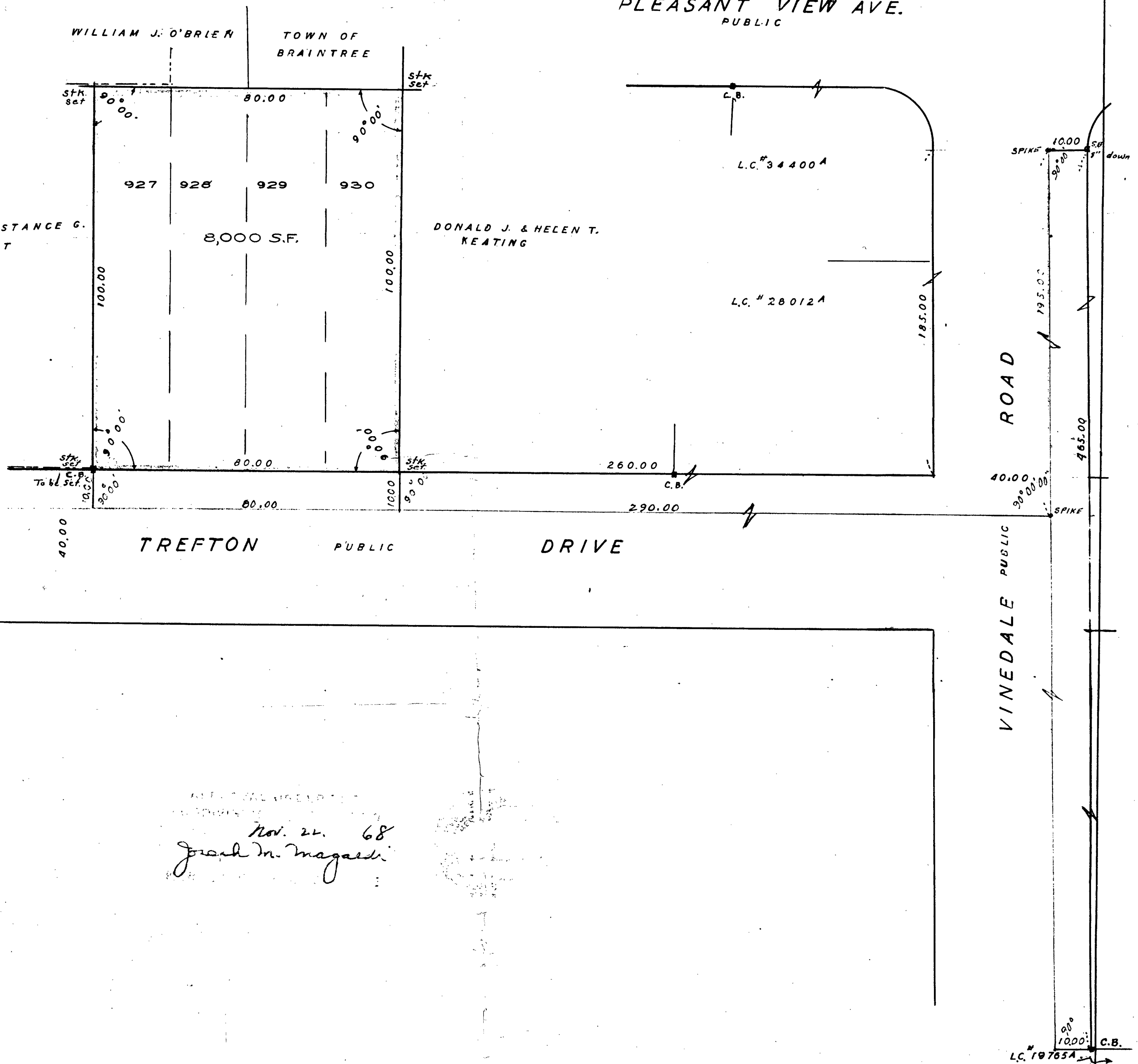


PLEASANT VIEW AVE.
 PUBLIC

WILLIAM J. O'BRIEN
 TOWN OF
 BRAINTREE

JOHN Q. & CONSTANCE G.
 MOFFETT

DONALD J. & HELEN T.
 KEATING



Nov. 24. 68
Frank M. Magaldi