

PLAN OF LAND IN
WEYMOUTH
 NORFOLK COUNTY, MASS.

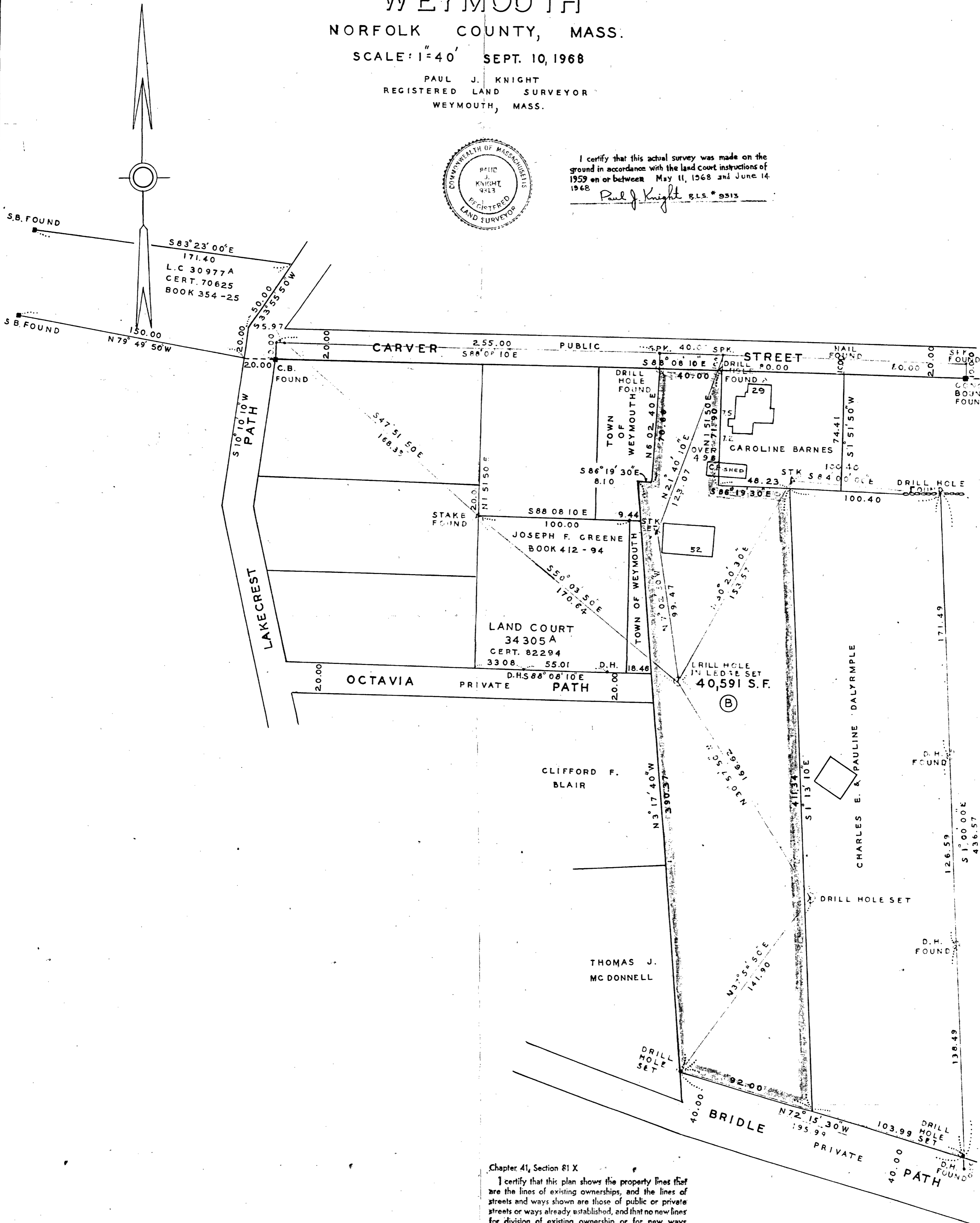
SCALE: 1"=40' SEPT. 10, 1968

PAUL J. KNIGHT
 REGISTERED LAND SURVEYOR
 WEYMOUTH, MASS.



I certify that this actual survey was made on the ground in accordance with the land court instructions of 1959 on or between May 11, 1968 and June 14, 1968

Paul J. Knight B.L.S. # 9313



Chapter 41, Section 81 X

I certify that this plan shows the property lines that are the lines of existing ownerships, and the lines of streets and ways shown are those of public or private streets or ways already established, and that no new lines for division of existing ownership or for new ways are shown.

Paul J. Knight